



OPEN ACCESS

Perinatal outcomes among births to women with infection during pregnancy

Adama Baguiya ¹, Mercedes Bonet ², José Guilherme Cecatti ³,
Vanessa Brizuela ², Ala Curteanu ⁴, Meile Minkauskiene ⁵, Kapila Jayaratne,⁶
Carolina Carvalho Ribeiro-do-Valle ⁷, Mihaela-Alexandra Budianu,⁸
João Paulo Souza ⁹, Séni Kouanda ^{10,11} The WHO Global Maternal Sepsis Study
(GLOSS) Research Group

► Additional supplemental material is published online only. To view, please visit the journal online (<http://dx.doi.org/10.1136/archdischild-2021-321865>).

For numbered affiliations see end of article.

Correspondence to

Dr Adama Baguiya, Kaya Health and Demographic Surveillance System (Kaya-HDSS), Research Institute of Health Sciences, Ouagadougou, Burkina Faso; abaguiya@gmail.com

Received 15 February 2021
Accepted 9 July 2021

ABSTRACT

Objective This study is part of the Global Maternal Sepsis Study (GLOSS). It aimed to estimate neonatal near-miss (NNM) and perinatal death frequency and maternal risk factors among births to women with infection during pregnancy in low-income and middle-income countries (LMIC).

Design We conducted a 1-week inception hospital-based cohort study.

Setting The study was carried out in 408 hospitals in 43 LMIC of all the WHO regions in 2017.

Patients We included women with suspected or confirmed infection during pregnancy with at least 28 weeks of gestational age up to day-7 after birth. All babies born to those women were followed from birth until the seventh day after childbirth. Perinatal outcomes were considered at the end of the follow-up.

Main outcome measures Perinatal outcomes were (i) babies alive without severe complication, (ii) NNM and (iii) perinatal death (stillbirth and early neonatal death).

Results 1219 births were analysed. Among them, 25.9% (n=316) and 10.1% (n=123) were NNM and perinatal deaths, respectively. After adjustment, maternal pre-existing medical condition (adjusted odds ratios (aOR)=1.5; 95% CI 1.1 to 2.0) and maternal infection suspected or diagnosed during labour (aOR=1.9; 95% CI 1.2 to 3.2) were the independent risk factors of NNM. Maternal pre-existing medical condition (aOR=1.7; 95% CI 1.0 to 2.8), infection-related severe maternal outcome (aOR=3.8; 95% CI 2.0 to 7.1), mother's infection suspected or diagnosed within 24 hours after childbirth (aOR=2.2; 95% CI 1.0 to 4.7) and vaginal birth (aOR=1.8; 95% CI 1.1 to 2.9) were independently associated with increased odds of perinatal death.

Conclusions Overall, one-third of births were adverse perinatal outcomes. Pre-existing maternal medical conditions and severe infection-related maternal outcomes were the main risk factors of adverse perinatal outcomes.

BACKGROUND

Direct maternal infections account for 10.7% of all maternal deaths globally.¹ Low-income and middle-income countries (LMIC) represent 98% of neonatal mortality, with 79% occurring in South Asia and sub-Saharan Africa.² More than one-third of neonatal deaths occur during the first day of life and around two-thirds within the first week.^{3,4}

What is already known on this topic?

- Previous studies mainly assessed infection during pregnancy as an exposure to measure its effects on perinatal outcomes in specific diseases such as malaria, Streptococcus B, and HIV.
- There are studies on the burden of perinatal outcomes in the specific group of mothers admitted with infection, but mostly from high-income countries.
- We could not find strong evidence on maternal risk factors, and data in this specific population in low-income and middle-income countries (LMIC) are scarce.

What this study adds?

- This study provides data on perinatal outcomes in women with confirmed or suspected infection during pregnancy with global data from 43 LMIC.
- It identified maternal factors that explain why some women have 'healthy babies' and others have stillbirths, early neonatal deaths or babies with severe neonatal complications.
- These findings can help to improve newborn care as they highlight the adverse condition of fetuses and newborns in women with severe clinical status.

Among those deaths, at least one-third is related to infection, and neonatal sepsis is a major cause of infant morbidity and mortality.⁴ Hibberd *et al* estimated the incidence of possible bacterial severe neonatal infection in 2016 to be 12.9% (95% CI 12.8% to 13.0%) with a case-fatality risk of 14% in sub-Saharan Africa, South Asia and Latin America.⁵ Although neonatal mortality declined worldwide between 1990 and 2019 by 20 deaths per 1000 live births,⁶ the global burden of infection-related neonatal mortality did not significantly drop,⁷ and the identification and management of maternal and neonatal infection are still challenging in developing countries.



© Author(s) (or their employer(s)) 2021. Re-use permitted under CC BY-NC. No commercial re-use. See rights and permissions. Published by BMJ.

To cite: Baguiya A, Bonet M, Cecatti JG, *et al*. *Arch Dis Child* Epub ahead of print: [please include Day Month Year]. doi:10.1136/archdischild-2021-321865

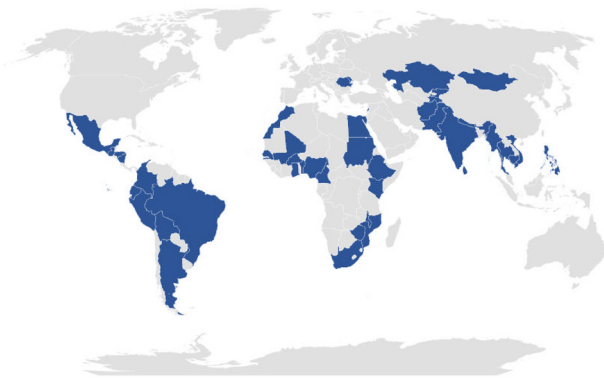


Figure 1 Map of the world showing the included countries in blue.

Infection in pregnant women has mostly been examined as exposure in a disease-specific analysis.^{8–10} Consequently, previous studies showed that infants born to mothers with infection during pregnancy have an increased risk of adverse perinatal outcomes (APO), including stillbirths and neonatal deaths, compared with those who did not experience a maternal infection.^{11 12} However, in the specific population of women with infection during pregnancy, little is known about why some have ‘healthy babies’, while others’ pregnancies end with APO. Most of the available data are from high-income countries and often, limited samples of perinatal outcomes were examined.^{12–14} The WHO Global Maternal Sepsis Study (GLOSS), carried out in 52 countries, is an opportunity to provide data on the burden and risk factors of APO in this population in LMIC.¹⁵ Therefore, we aimed to determine the frequency and maternal risk factors of APO among births from women with suspected or confirmed infection during pregnancy in LMIC.

METHODS

Study design and participants

We included data from 43 LMICs participating in GLOSS, based on the World Bank classification,¹⁶ representing all of the six WHO regions. GLOSS was a hospital-based, prospective, 1-week inception cohort study.¹⁶ Figure 1 shows the map of the countries involved in the study. Detailed information on the study participants and procedures can be found elsewhere.¹⁷ Briefly, GLOSS included all women admitted or already hospitalised for at least 12 hours during the study identification week (28 November to 4 December 2017), with suspected or confirmed infection at any stage of pregnancy, up to the 42nd day after

abortion or childbirth in participating health facilities, in purposively selected geographical areas. Information on perinatal outcomes was collected for all births up to the seventh day after childbirth, discharge or death, whichever occurred first.

We excluded all pregnancies that ended before 28 weeks of gestational age¹⁸ and women for whom the infection was suspected or confirmed after the seventh day postpartum.

Outcome variable

The outcome variable was perinatal outcome evaluated at the end of follow-up, with three categories, which were (1) alive without severe complication, (2) neonatal near-miss (NNM) and (3) perinatal death. Perinatal death included early neonatal death (within 7 days after childbirth) and stillbirth (fresh or macerated). We applied the WHO definition of stillbirths¹⁹ and used the definition of NNM suggested by Santos *et al* and Pileggi-Castro *et al*^{20 21} (table 1). Babies alive without severe complications were born alive and did not experience any severe neonatal complication and were still alive at the end of follow-up.

Independent variables

Covariates included selected women’s demographic, obstetric and clinical characteristics. Demographic characteristics were mother’s age (in years), living with partner or spouse (yes/no) and schooling (in years). Obstetric factors were the number of previous births (none, one or more), other obstetric complications (none, any additional complication) and the final mode of birth (spontaneous/instrumental vaginal or caesarean section). Clinical characteristics included pre-existing maternal medical condition (none or any condition), the severity of the infection-related maternal outcome (less severe infection, infection-related complications and infection-related severe maternal outcome, which included maternal death and near-miss) as defined by the WHO Global Maternal Sepsis Study (GLOSS) Research Group¹⁵ pregnancy status at the time of suspicion or confirmation of the infection (during pregnancy, during labour, within 24 hours, between 24 and 72 hours and after 72 hours after childbirth), location at the time of suspicion or confirmation of the infection (arrived from home, referred by another facility, already hospitalised at the start of the study) and the source of infection (chorioamnionitis, endometritis, urinary tract infection, skin, wound, catheter infection and other infections).

Potential contextual factors were considered for adjustment. These included the country level of income (upper middle-income, lower middle-income and low-income) as defined by the World Bank in 2019,¹⁶ the WHO region (for Asia which we

Table 1 Criteria for the definition of neonatal near-miss cases^{20 21}

Any of the pragmatic and management criteria is enough to define a neonatal near-miss case within the first week after birth			
n#	Pragmatic criteria	n#	Management criteria
1	Birthweight <1750 grams	1	Use of parenteral antibiotics
2	Gestational age at birth between 28 and 33 weeks	2	Ventilation (use of nasal continuous positive airway pressure or invasive support)
3	5 min APGAR score <7	3	Intubation at birth
		4	Use of phototherapy within the first 24 hours after birth
		5	Cardiopulmonary resuscitation
		6	Use of any vasoactive drug
		7	Use of anticonvulsants
		8	Administration of surfactant
		9	Administration of blood product
		10	Use of steroids to treat refractory hypoglycaemia
		11	Any surgery

combined two regions (South Eastern Asia and Western Pacific)), the level of care (tertiary, secondary or primary), the type of health facility administration (public or private) and the number of births in 2016.

Data source and collection

GLOSS data were collected at the facility and individual women level with standardised tools. Each participating hospital completed the facility form, which provided information on hospitals' characteristics. Individual women form collected data on demographic, obstetric, clinical characteristics and information on the infections and the management during their stay in the health facility and information used to define perinatal outcomes. Infections could be confirmed using clinical examination alone or complemented by a radiological, laboratory or microbiological finding. Suspicion or confirmation of infection was undertaken as part of standard routine care in health facilities. A comprehensive description of the study procedures and measurements is available in the protocol and the previous paper of GLOSS.^{15 17}

Statistical analysis

We computed the proportion of NNM and perinatal deaths and their rate per 1000 live births with a 95% CI. We then fitted a mixed effects multinomial logistic regression model to examine the relationship between maternal characteristics and APO. In all the analyses, the category of babies born alive without severe neonatal complications was the outcome variable reference category. We first assessed the effects of the characteristics with

crude ORs taking into account the country level clustering of the data in simple multinomial logistic regression models. We then fitted a two-level hierarchical multiple multinomial logistic regression model to estimate the adjusted odds ratios (aOR) with their 95% CI.²² The first level of this hierarchical model referred to maternal characteristics of each birth and the second level was the hospital and country-level variables. We used the intraclass correlation coefficient to assess the relevance of the multilevel analysis. The final model was selected using a stepwise approach based on the assessment of the Bayesian Information Criteria (BIC) and Akaike Information Criteria (AIC). In the null model, the AIC and BIC were 2055.5 and 2076.0, respectively. They dropped to 1763.7 and 1893.6, respectively, in the first model, which only included level of care as the hospital-level adjustment factor and 1747.8 and 1927.6, respectively, in the final model that controlled for country income level and the number of births. Based on the AIC, we considered that the final model fits the best. Furthermore, we performed a subanalysis using the final model with confirmed cases only (n=933). However, that analysis identified the same factors and did not significantly change the ORs; hence we did not present those results.

All statistical analyses were performed using Stata V.15.1 (Stata 2017: Release 15. College Station, Texas, USA).

Ethical considerations

Women were screened and included by the hospital teams. Data were extracted from medical records and no interaction was required with the women. The participants' identification data were kept confidential. Depending on the country's regulations

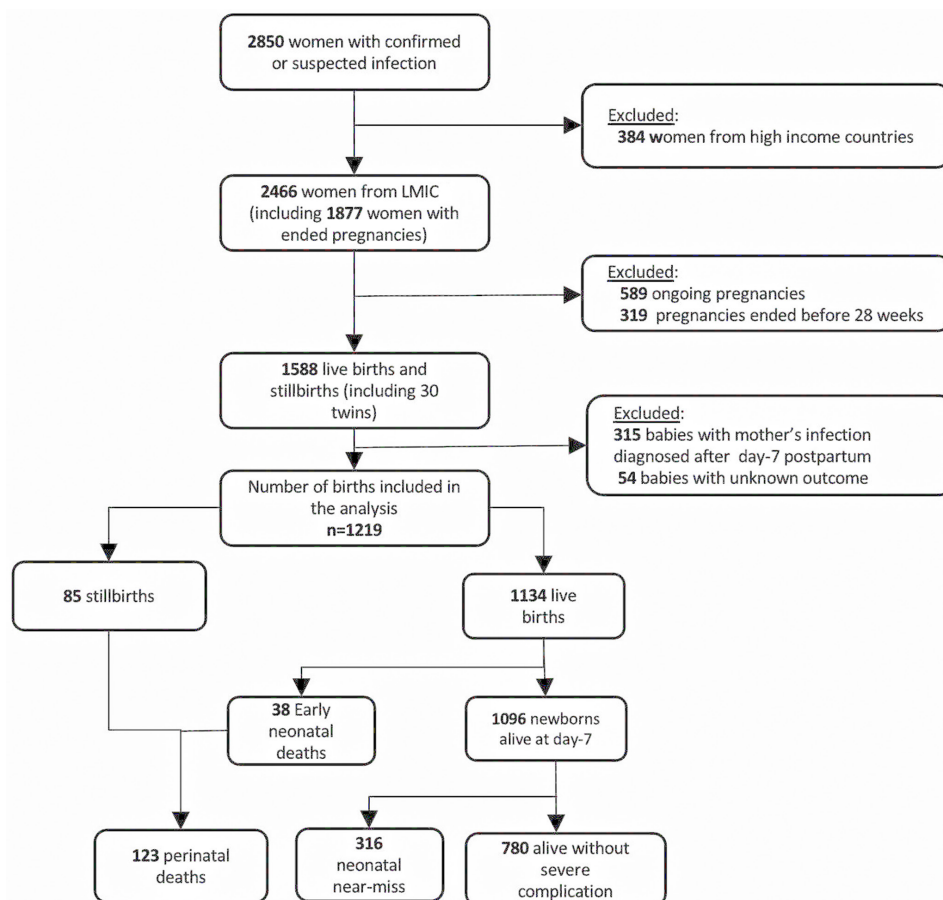


Figure 2 Flowchart of the study. LMIC, low-income and middle-income countries.

Table 2 Percentage and rate of perinatal outcomes per 1000 live births from women with infection during pregnancy, by the country level of income

Perinatal outcomes	Total (n=1219)			Low income (n=245)			Lower middle income (n=593)			Upper middle income (n=381)		
	N	%	Rate per 1000 live births	N	%	Rate per 1000 live births	N	%	Rate per 1000 live births	N	%	Rate per 1000 live births
Alive without severe complication	780	64.0		153	62.4		351	59.2		276	72.4	
Neonatal near-miss*	316	25.9	278.7 (224.9–332.4)	52	21.2	238.5 (151.7–325.3)	172	29.0	317.9 (245.7–390.2)	92	24.1	245.3 (160.2–330.5)
Perinatal death	123	10.1	108.5 (64.9–152.0)	40	16.3	183.5 (80.8–286.2)	70	11.8	129.4 (78.8–180.0)	13	3.4	34.7 (11.2–58.2)
Early neonatal death	38	3.1	33.5 (20.2–46.8)	13	5.3	59.6 (24.4–94.8)	18	1.5	33.3 (18.4–48.2)	7	1.8	18.7 (3.4–33.9)
Stillbirth	85	7.0	75.0 (41.0–108.9)	27	11.0	123.9 (45.4–202.3)	52	4.3	96.1 (52.7–139.6)	6	1.6	16.0 (5.0–27.0)
Fresh stillbirth	34	2.8	30.0 (14.7–45.2)	12	4.9	55.0 (23.0–87.1)	20	1.6	37.0 (16.4–57.5)	2	0.5	5.3 (2.9–13.6)
Macerated stillbirth	51	4.2	45.0 (21.4–68.5)	15	6.1	68.8 (3.2–140.8)	32	2.6	59.1 (29.7–88.6)	4	1.0	10.7 (2.8–18.5)

*Based on criteria presented in table 1.

and local Institutional Review Boards (IRB), the need for informed consent was waived or sought and obtained from the participants or their caregivers if the former was unconscious. Each site also submitted the protocol to its national or institutional ethics committee for approval before data collection.

RESULTS

We included 408 hospitals, including 317 (77.7%) located in an urban area. Tertiary and secondary level hospitals represented 38.7% (n=158) and 44.1% (n=180) of the sample, respectively (online supplemental appendix 1). These facilities were from 43 LMIC: 13 in Africa, 9 in Asia (South-East Asia and Western Pacific), 6 in Eastern Mediterranean, 5 in Europe and 10 in the Americas. The list of the countries involved is presented in online supplemental appendix 2. A total of 1219 births were analysed.

Figure 2 shows the flowchart of the study. Overall, 276 babies born alive were suspected of having an early neonatal infection, including 199 NNM and 20 perinatal deaths.

Neonatal near-miss

Among all NNM cases, 42.7% (n=135) met the pragmatic criteria, including 29.7% (n=84) who had a gestational age between 28 and 33 weeks, and 82.6% (n=261) met the management criteria. 61.1% (n=193) of the near-miss cases were treated with parenteral antibiotics, and 20.3% (n=64) had phototherapy within 24 hours after birth (online supplemental appendix 3).

The overall percentage of NNM was 25.9% (n=316; 95% CI 23.5 to 28.5) of all births, and the intrahospital rate was 278.7 (224.9 to 332.4) cases per 1000 live births (table 2). The rates and percentages were not significantly different across countries

Table 3 Perinatal outcomes of births from women with infection during pregnancy by maternal demographic and obstetric characteristics

Variables	Alive without severe complication (n=780)			Neonatal near-miss (n=316)			Perinatal death (n=123)		
	n (%)	n (%)	OR	95% CI	p value	n (%)	OR	95% CI	p value
Age (years)									
<20	101 (60.5)	48 (28.7)	1.2	0.8 to 1.7	0.385	18 (10.8)	1.2	0.7 to 2.2	0.522
20–35	553 (64.6)	222 (25.9)	ref			81 (9.5)			
35 and more	122 (65.6)	42 (22.6)	0.9	0.6 to 1.3	0.430	22 (11.8)	1.2	0.7 to 2.1	0.438
Living with partner/spouse									
No	78 (67.2)	26 (22.4)	ref			12 (10.3)	ref		
Yes	672 (64.5)	266 (25.5)	1.2	0.8 to 1.8	0.393	104 (10.0)	1.0	0.5 to 2.1	0.987
Schooling (years)									
Less than 5	103 (54.8)	47 (25.0)	ref			38 (20.2)	ref		
5–11 years	329 (64.9)	138 (27.2)	1.2	0.5 to 2.8	0.747	40 (7.9)	0.4	0.2 to 0.8	0.003*
12 or more	108 (68.8)	40 (25.5)	1.1	0.5 to 2.7	0.789	9 (5.7)	0.2	0.1 to 0.5	0.001*
Number of previous births									
0	237 (64.1)	87 (23.5)	ref			46 (12.4)	ref		
1 or more	534 (63.8)	226 (27.0)	0.9	0.6 to 1.2	0.401	77 (9.2)	1.4	0.9 to 2.1	0.206
Other obstetric complications†									
Any additional complication	279 (56.5)	141 (28.5)	1.4	1.0 to 2.0	0.026*	74 (15.0)	2.7	1.6 to 4.5	0.000*
None	501 (69.1)	175 (24.1)	ref			49 (6.8)	ref		
The final mode of birth									
Vaginal (spontaneous/instrumental)‡	327 (63.3)	127 (24.6)	0.9	0.6 to 1.4	0.716	63 (12.2)	1.6	1.0 to 2.5	0.069
Caesarean-section	444 (64.7)	187 (27.3)	ref			55 (8.0)	ref		

*Statistically significant (p<0.05).

†Includes haemorrhage, hypertensive and thromboembolic disorders, dystocia, trauma during childbirth, anaesthesia, and surgery-related complications.

‡Instrumental: 35 cases.

Table 4 Perinatal outcomes of births from women with infection during pregnancy by maternal clinical characteristics

Variables	Alive without severe complication (n=780)	Neonatal near-miss (n=316)				Perinatal death (n=123)			
	n (%)	n (%)	OR	95% CI	p value	n (%)	OR	95% CI	p value
Pre-existing medical condition*									
None	386 (67.4)	141 (24.6)	ref			45 (7.9)	ref		
Any of the medical conditions	353 (60.8)	163 (28.1)	1.3	0.8 to 2.0	0.318	65 (11.2)	1.6	1.0 to 2.4	0.036†
Body mass index									
<25	172 (65.6)	65 (24.8)	1.1	0.7 to 1.8	0.617	25 (9.5)	2.6	1.3 to 5.0	0.005†
25–29	200 (66.5)	80 (26.6)	1.2	0.8 to 1.7	0.371	21 (7.0)	1.9	0.9 to 4.1	0.120
30 or more	178 (71.8)	60 (24.2)	ref			10 (4.0)	ref		
Severity of maternal infection‡									
Less severe infection	549 (67.4)	206 (25.3)	ref			59 (7.3)	ref		
Infections with complication	151 (66.8)	54 (23.9)	0.9	0.6 to 1.5	0.839	21 (9.3)	1.3	0.7 to 2.4	0.401
Infection-related severe maternal outcome	80 (44.7)	56 (31.3)	1.9	1.1 to 3.1	0.014†	43 (24.0)	5.0	2.7 to 9.3	0.000†
Pregnancy status at the time of infection suspected or confirmed									
Pregnant, not in labour	153 (62.5)	67 (27.4)	1.4	0.8 to 2.3	0.216	25 (10.2)	1.4	0.6 to 3.3	0.426
Pregnant, in labour	172 (60.4)	90 (31.6)	1.7	0.8 to 3.5	0.189	23 (8.1)	1.2	0.5 to 2.9	0.764
Postpartum within 24 hours	162 (61.4)	69 (26.1)	1.3	0.8 to 2.3	0.286	33 (12.5)	1.8	0.9 to 3.6	0.124
Postpartum 24–72 hours	130 (69.9)	40 (21.5)	1.0	0.7 to 1.4	0.869	16 (8.6)	1.1	0.5 to 2.2	0.877
Postpartum after 72 hours	129 (69.7)	41 (22.2)	ref			15 (8.1)	ref		
Location at the time of infection suspected or confirmed									
Arriving from home	321 (71.6)	95 (21.2)	ref			32 (7.1)	ref		
Transferred from another facility	79 (47.9)	59 (35.8)	2.5	1.4 to 4.5	0.002†	27 (16.4)	3.4	1.6 to 7.2	0.001†
Already hospitalised	378 (62.7)	162 (26.9)	1.5	1.0 to 2.1	0.046†	63 (10.5)	1.7	1.0 to 2.9	0.069
Source of infection§									
Chorioamnionitis	125 (48.8)	97 (37.9)	2.4	1.3 to 4.6	0.009†	34 (13.3)	4.3	1.9 to 9.8	0.001†
Endometritis	89 (59.7)	36 (24.2)	1.3	0.7 to 2.2	0.463	24 (16.1)	4.2	1.6 to 10.9	0.003†
Urinary tract infection	157 (72.0)	51 (23.4)	ref			10 (4.6)	ref		
Skin, wound and catheter infection	91 (81.3)	17 (15.2)	0.6	0.3 to 1.2	0.152	4 (3.6)	0.7	0.2 to 2.1	0.521
Other infection	116 (58.9)	52 (26.4)	1.4	0.8 to 2.5	0.277	29 (14.7)	3.9	1.8 to 8.7	0.001†

*Includes anaemia, diabetes, HIV or any disease that required corticotherapy, chemotherapy, immunotherapy or transfusion during the pregnancy.

†Statistically significant ($p < 0.05$).

‡Severe maternal outcome defined as infection-related maternal death or near-miss.

§Source of infection clinically, radiologically or microbiologically confirmed.

levels of income (online supplemental appendix 4) and the WHO regions.

The maternal factors that were significantly associated with NNM in the unadjusted analysis were other obstetric complications (OR=1.4; 95% CI 1.0 to 2.0) (table 3), infection-related severe maternal outcome (OR=1.9; 95% CI 1.1 to 3.1), maternal transfer from another facility (OR=2.5; 95% CI 1.4 to 4.5), the fact that the mother was already hospitalised at the start of the study (OR=1.5; 95% CI 1.0 to 2.1) and chorioamnionitis (OR=2.4; 95% CI 1.3 to 4.6) (table 4).

After adjustment, only pre-existing medical conditions (aOR=1.5; 95% CI 1.1 to 2.0) and infections suspected or diagnosed during labour (aOR=1.9; 95% CI 1.2 to 3.2) were independently associated with higher odds of NNM (table 5).

Perinatal death

The overall proportion of perinatal deaths was 10.1% (n=123; 95% CI 8.5 to 11.9) (table 2). The intrahospital rate of perinatal death was 108.5 (64.9 to 152.0) deaths per 1000 live births, with a variation across countries levels of income: 183.5 (80.8 to 286.2), 129.4 (78.8 to 180.0) and 34.7 (11.2 to 58.2) deaths per 1000 in low-income, lower middle-income and upper middle-income countries, respectively. Among these deaths, 85 were stillbirths, including 34 (40.0%) of fresh stillbirths.

After stratification by country income level, the percentages of perinatal deaths were 16.3%, 11.8% and 3.4% of all births in low-income, lower middle-income and upper middle-income countries, respectively (online supplemental appendix 4). The percentages in the WHO region are presented in online supplemental appendix 5.

Online supplemental appendix 6 shows the crude ORs of the relationship between pregnancy outcomes and country and hospital characteristics. Tables 3 and 4 show crude ORs of socio-demographic, obstetric and clinical factors.

We observed in the final model that pre-existing medical conditions (aOR=1.7; 95% CI 1.0 to 2.8), infection-related severe maternal outcomes (aOR=3.8; 95% CI 2.0 to 7.1), infection suspected or diagnosed within 24 hours after childbirth (aOR=2.2; 95% CI 1.0 to 4.7) and vaginal birth (aOR=1.8; 95% CI 1.1 to 2.9) were the factors independently associated with increased odds of perinatal death (table 5).

DISCUSSION

This study adds to previous efforts in estimating the burden of NNM and perinatal death¹¹ using global data in the specific population of women with confirmed or suspected infection during pregnancy in LMIC. We showed that one-third of the births were APO (25% were NNM and 10% were either stillbirth

Table 5 Maternal factors independently associated with neonatal near-miss and perinatal death from women with infection during pregnancy

Variable	Neonatal near-miss (n=316)			Perinatal death (n=123)		
	aOR	95% CI	p value	aOR	95% CI	p value
Maternal pre-existing condition*						
None	ref			ref		
Any pre-existing condition	1.5	1.1 to 2.0	0.023†	1.7	1.0 to 2.8	0.041†
Severity of maternal infection‡						
Less severe infection	ref			ref		
Infections with complication	0.9	0.6 to 1.4	0.716	1.0	0.5 to 1.9	0.904
Infection-related severe maternal outcome	1.5	0.9 to 2.4	0.099	3.8	2.0 to 7.1	<0.001†
Pregnancy status at the time of infection suspected or confirmed						
Pregnant not in labour	1.5	0.9 to 2.6	0.100	1.7	0.8 to 3.8	0.199
Pregnant in labour	1.9	1.2 to 3.2	0.011†	1.2	0.5 to 2.9	0.610
Postpartum within 24 hours	1.5	0.9 to 2.5	0.136	2.2	1.0 to 4.7	0.045†
Postpartum 24–72 hours	1.0	0.6 to 1.7	0.964	0.9	0.4 to 2.7	0.905
Postpartum more than 72 hours	ref			ref		
Other obstetric complications						
None	ref			ref		
Any complication	1.3	0.9 to 1.8	0.104	1.7	1.0 to 2.8	0.055
The final mode of birth						
Vaginal (spontaneous/instrumental)	0.9	0.7 to 1.2	0.461	1.8	1.1 to 2.9	0.022†
C-section	ref			ref		

Random effect: country-level variance of the variance component model: 0.3 with 95% CI (0.1 to 0.6) and an intraclass correlation coefficient of 13%.

Random effect: country-level variance of the final model: 0.6 with 95% CI (0.3 to 1.2) with an intraclass correlation coefficient of 20%.

*Includes anaemia, diabetes, HIV or any disease that required corticotherapy, chemotherapy, immunotherapy or transfusion during the pregnancy.

†Statistically significant (p<0.05).

‡Infections with complications include an invasive procedure to treat the source of infection (vacuum aspiration, dilatation and curettage, wound debridement, drainage (incision, percutaneous, culdotomy) laparotomy, lavage and other surgery), admission to intensive care or high dependency unit or transfer to another facility. Severe maternal outcome defined as infection-related maternal death or near-miss

aOR, adjusted OR for country-level clustering (level 2 in the model), with the country and hospital-level factors (country income level, hospital level of care and number of births in 2016) in the multilevel multinomial logistic regression model.; ICC, intraclass correlation coefficient.

or early neonatal death). The perinatal death rate was 108.5 per 1000 live births. Although we do not have previous data for comparison, these proportions are high compared with recent estimates of perinatal mortality which reported 34.7 deaths per 1000 in sub-Saharan Africa²³ and 77 per 1000 in South Asia,²⁴ and to the Sustainable Development Goal target for 2030 which is 12 deaths per 1000. Those rates were estimated among births from women in the general population, but they show that our study population is at higher risk of adverse perinatal mortality.⁸

Few studies estimated the rate of NNM in LMIC with the definition adopted in this study.^{25–26} None of them provided estimates on the specific population involved in the current research. Nevertheless, the NNM rates and percentages in our study were much higher than the existing ones.^{25–26}

Thirty-four stillbirths out of 85 (40.0%) were fresh. These estimates are consistent with the distribution of the global burden of stillbirth as reported by the United Nations (UN).²⁷ In its latest report, the UN raised concerns regarding some perinatal deaths, particularly stillbirths, referring to them as 'loss that could be avoided with improved monitoring and timely access to emergency obstetric care when required'. Indeed, some perinatal deaths, particularly intrapartum deaths (fresh stillbirth) and neonatal deaths within the first hours of life, can be prevented through improved intrapartum care for both the woman and the baby because they are linked to the access and quality of care during pregnancy and childbirth.^{27–28} In LMIC, hospitals often face a lack of skilled maternity staff who are well trained in emergency newborn care, essential drugs and the right equipment for managing neonatal conditions, including in intensive

care. This significantly reduces their capacity to care for women with infection and their newborns, such as the ones from our study population.^{29–30}

In this analysis, we estimated the likelihood of a particular birth falling into the group of NNM or perinatal death instead of the group of babies alive without severe complication based on the mother's characteristics. The main maternal factors identified in this study imply that the more complicated the mother's clinical condition, the worse her perinatal outcome. Any condition that severely affects the mother during pregnancy or immediately after childbirth can also threaten the baby's life.³¹ Thus, preventing or diagnosing and treating infection during pregnancy, appropriately and timely, can potentially save both the mother's and the baby's lives.³²

Surprisingly, in this study, the severe maternal outcome was associated with NNM in the unadjusted analysis, but it was no longer statistically significant after adjustment. In contrast, a recent cohort study reported that newborns whose mothers had life-threatening conditions had almost 13 times higher risk of experiencing NNM.²⁵ But that study did not include only women with infection. Second, we analysed both NNM and perinatal deaths. In studies that looked only at NNM, perinatal deaths were excluded and therefore, NNM could be overestimated.²⁵

None of the demographic characteristics (neither the mother's age nor her education level) were associated with NNM or perinatal death. A similar pattern was found with other obstetric complications, such as pre-eclampsia.³³ We believe that, in the presence of severe clinical conditions, the effect of the complication outweighs that of demographic characteristics.

Strengths and limitations

This study could be the first to provide evidence on perinatal outcomes in the specific population of women with infection during pregnancy using data from as many as 43 LMIC. In addition, GLOSS used a standardised screening checklist and inclusion criteria to ensure that all participants across the countries were included on the same basis and a validated definition of NNM cases. Further, the awareness campaign that accompanied the GLOSS could have improved maternal infection identification and added diagnostic reliability.³⁴

Nevertheless, NNM and perinatal death frequency could be underestimated because we stopped the babies' follow-up when the mothers were discharged. In addition, only a limited number of sociodemographic factors were assessed. Finally, we relied solely on routinely available procedures and could not confirm all cases of infections, and APO were identified based on criteria reported by healthcare providers.

CONCLUSION

Pregnancies complicated with infection can result in a high proportion of APO. Our study showed that a quarter of all births were NNM, and 1 out of 10 were perinatal deaths. In total, one-third of all births in our study population represented APO. In fetuses and infants born to women with infection during pregnancy, the severity of women's clinical condition was the main factor associated with the fact that some have 'healthy babies', while others' pregnancies end with APO. Healthcare providers and policymakers in LMIC should strengthen hospitals' readiness and capacity to prevent and timely identify maternal infections and complications. To do so, facilities should address their needs for optimal skilled staff, equipment and drug availability for good quality emergency obstetric and newborn care.

Author affiliations

¹Kaya Health and Demographic Surveillance System (Kaya-HDSS), Research Institute of Health Sciences, Ouagadougou, Burkina Faso

²UNDP/UNFPA/UNICEF/WHO/World Bank Special Programme of Research, Development and Research Training in Human Reproduction (HRP), Department of Sexual and Reproductive Health and Research, World Health Organization, Geneva, Switzerland

³Department of Obstetrics and Gynecology, School of Medicine, University of Campinas, Campinas, SP, Brazil

⁴Department of Perinatology, Mother and Child Institute, Chisinau, Moldova

⁵Department of Obstetrics and Gynaecology, Lithuanian University of Health Sciences, Kaunas, Lithuania

⁶Maternal & Child Morbidity & Mortality Surveillance Unit, Family Health Bureau, Colombo, Sri Lanka

⁷Department of Obstetrics and Gynecology, School of Medicine, University of Campinas, Rio de Janeiro, Brazil

⁸George Emil Palade University of Medicine, Pharmacy, Science, and Technology of Targu Mures, Targu Mures, Mures, Romania

⁹Department of Social Medicine, Ribeirao Preto Medical School, University of Sao Paulo, Sao Paulo, Brazil

¹⁰Ecole doctorale ED2ST, Saint Thomas d'Aquin University (USTA), Ouagadougou, Burkina Faso

¹¹Biomedical and Public Health Department, Research Institute of Health Sciences, Ouagadougou, Burkina Faso

Twitter Adama Baguuya @baguuya

Acknowledgements The research group is very grateful to all the participating hospitals in all the countries involved in GLOSS.

Collaborators The WHO Global Maternal Sepsis Study Research group: Afghanistan: Mohammad Iqbal Aman, Bashir Noormal. Argentina: Virginia Díaz, Marisa Espinoza, Julia Pasquale. Belgium: Charlotte Leroy, Kristien Roelens, Griet Vandenberghe. Benin: M Christian Urlyss Agossou, Sourou Goufodji Keke, Christiane Tshabu Aguemon. Bolivia: Patricia Soledad Apaza Peralta, Víctor Conde Altamirano, Rosalinda Hernández Muñoz. Brazil: José Guilherme Cecatti, Carolina C Ribeiro-Do-Valle. Burkina Faso: Vincent Batiene, Kadari Cisse, Henri Gautier Ouedraogo. Cambodia: Cheang Kannitha, Lam Phirun, Tung Rathavy. Cameroon: Elie Simo,

Pierre-Marie Tebeu, Emah Irene Yakana. Colombia: Javier Carvajal, María Fernanda Escobar, Paula Fernández. Denmark: Lotte Berdiin Colmorn, Jens Langhoff-Roos. Ecuador: Wilson Mereci, Paola Vélez. Egypt: Yasser Salah Eldin, Alaa Sultan. Ethiopia: Abdulfetah Abdulkadir Abdosh, Alula M Teklu, Dawit Worku Kassa. Ghana: Richard Adanu, Philip Govule, Charles Noora Lwanga. Guatemala: William Enrique Arriaga Romero, María Guadalupe Flores Aceituno. Honduras: Carolina Bustillo, Rigoberto Castro, Bredy Lara. India: Vijay Kumar, Vanita Suri, Sonia Trikha. Italy: Irene Cetin, Serena Donati, Carlo Personeni. Kazakhstan: Guldana Baimussanova, Saule Kabylova, Balgyn Sagyndykova. Kenya: George Gwako, Alfred Ogoti, Zahida Qureshi. Kyrgyzstan: Raisa Asylbasheva, Aigul Boobekova, Damira Seksenbaeva. Lebanon: Faysal El Kak, Saad Eddine Itani, Sabina Abou Malham. Lithuania: Meilė Minkauskienė, Diana Ramašauskaitė. Malawi: Owen Chikhwaza, Luis Gadama, Eddie Malunga. Mali: Haoua Dembele, Hamadou Sangho, Fanta Eliane Zerbo. Mexico: Filiberto Dávila Serapio, Nazarea Herrera Maldonado, Juan Ismael Islas Castañeda. Moldova: Tatiana Carau, Ala Curteanu, Victor Petrov. Mongolia: Yadamasuren Buyanjargal, Seded Khishgee, Bat-Erdene Lkhagvasuren. Morocco: Bouchra Assarag, Amina Essolbi, Rachid Moukhi. Mozambique: Nafissa Bique Osman, Zara Jaze, Arlete Mariano. Myanmar: Hla Mya Thway Einda, Thae Maung Maung, Khaing Nwe Tin. Nepal: Tara Gurung, Amir Babu Shrestha, Sangeeta Shrestha. Netherlands: Kitty Bloemenkamp, Marcus J Rijken, Thomas Van Den Akker. Nicaragua: María Esther Estrada, Néstor J Pavón Gómez. Nigeria: Olubukola Adesina, Chris Aimakhu, Bukola Fawole. Pakistan: Rizwana Chaudhri, Saima Hamid, M Adnan Khan. Peru: María del Pilar Huatuco Hernández, Nelly M Zavaleta Pimentel. Philippines: Maria Lu Andal, Carolina Paula Martin, Zenaida Dy Recidoro. Romania: Mihaela-Alexandra Budianu, Lucian Pușcașiu. Senegal: Léopold Diouf, Dembo Guirassy, Philippe Marc Moreira. Slovakia: Miroslav Borovsky, Ladislav Kovac, Alexandra Kristufkova. South Africa: Sylvia Cebekhulu, Laura Cornelissen, Priya Soma-Pillay. Spain: Vicenç Cararach, Marta López, María José Vidal Benedé. Sri Lanka: Hemali Jayakody, Kapila Jayaratne, Dhammica Rowel. Sudan: Mohamed Elsheikh, Wisal Nabag, Sara Omer. Tajikistan: Victoria Tsoy, Ururbish Uzakova, Dilraba Yunusova. Thailand: Thitiporn Siriwachirachai, Thumwadee Tangsiriwatthana. UK: Catherine Dunlop, Marian Knight, David Lissauer. Uruguay: Aquilino M Pérez, Jhon Roman, Gerardo Viturera. Viet Nam: Dinh Anh Tuan, Luong Ngoc Truong, Nghiem Thi Xuan Hanh. Zimbabwe: Mugove Madziyire, Thulani Magwali, Stephen Munjanja. Regional Coordinators: Edgardo Abalos, Adama Baguuya, Mónica Chamillard, Bukola Fawole, Marian Knight, Seni Kouanda, Pisake Lumbiganon, Ashraf Nabhan, Ruta Nadisauskienė. Technical Advisory Group: Linda Bartlett, Fernando Bellissimo-Rodrigues, Shevin T Jacob, Sadia Shakoore, Khalid Yunis. Data management and analysis: Liana Campodónico, Cristina Cuesta, Hugo Gamarro, Daniel Giordano. WHO coordinating Unit: Fernando Althabe, Mercedes Bonet, Vanessa Brizuela, A Metin Gülmezoglu, João Paulo Souza.

Contributors AB, MB and JPS conceptualised the study with inputs from the research group. AB did the statistical analysis. MB, JGC, VB and SK contributed to statistical analysis, interpretation of findings and substantial input to the manuscript. MB, JGC, VB, AC, MM, KJ, CCRdV, M-AB, JPS and SK contributed to interpreting findings and commented on all versions of the manuscript. The study group members led the acquisition of data. All members of the research group approved the final manuscript.

Funding The Global Maternal Sepsis Study (GLOSS) and Awareness Campaign were funded by the UNDP/UNFPA/UNICEF/WHO/World Bank Special Program of Research, Development and Research Training in Human Reproduction (HRP), a cosponsored program executed by the World Health Organization (WHO) (project A65787); Department of Sexual and Reproductive Health and Research, World Health Organization, Geneva, Switzerland; Merck Sharp & Dohme Corp., a wholly-owned subsidiary of Merck and Co., Inc. (Kenilworth, NJ USA), through its Merck for Mothers program and the United States Agency for International Development (USAID) Grant number GHA-G-00-09-00003.

Disclaimer The views of the funding bodies have not influenced the content of this manuscript. The named authors alone are responsible for the views expressed in this publication and do not necessarily represent the decisions or the policies of the UNDP-UNFPA-UNICEF-WHO-World Bank Special Program of Research, Development and Research Training in Human Reproduction (HRP) or the World Health Organization (WHO).

Map disclaimer The depiction of boundaries on this map does not imply the expression of any opinion whatsoever on the part of BMJ (or any member of its group) concerning the legal status of any country, territory, jurisdiction or area or of its authorities. This map is provided without any warranty of any kind, either express or implied. Note: The boundaries shown in figure 1 do not imply the expression of any opinion whatsoever on the part of WHO concerning the legal status of any country, or concerning the delimitation of its frontiers or boundaries.

Competing interests None declared.

Patient consent for publication Not required.

Ethics approval The protocol was submitted to and approved by the WHO Research Ethics Review Committee (protocol ID: A65787, approved on 08/06/2017).

Provenance and peer review Not commissioned; externally peer reviewed.

Data availability statement Data are available on reasonable request. Individual countries own GLOSS country-level data. The WHO owns the global data used for this analysis, and they are available on request from the WHO's study coordinator in Geneva.

Supplemental material This content has been supplied by the author(s). It has not been vetted by BMJ Publishing Group Limited (BMJ) and may not have been peer-reviewed. Any opinions or recommendations discussed are solely those of the author(s) and are not endorsed by BMJ. BMJ disclaims all liability and responsibility arising from any reliance placed on the content. Where the content includes any translated material, BMJ does not warrant the accuracy and reliability of the translations (including but not limited to local regulations, clinical guidelines, terminology, drug names and drug dosages), and is not responsible for any error and/or omissions arising from translation and adaptation or otherwise.

Open access This is an open access article distributed in accordance with the Creative Commons Attribution Non Commercial (CC BY-NC 4.0) license, which permits others to distribute, remix, adapt, build upon this work non-commercially, and license their derivative works on different terms, provided the original work is properly cited, appropriate credit is given, any changes made indicated, and the use is non-commercial. See: <http://creativecommons.org/licenses/by-nc/4.0/>.

ORCID iDs

Adama Baguiya <http://orcid.org/0000-0003-1016-4896>

Mercedes Bonet <http://orcid.org/0000-0001-9015-1635>

José Guilherme Cecatti <http://orcid.org/0000-0003-1285-8445>

Vanessa Brizuela <http://orcid.org/0000-0002-4860-0828>

Ala Curteanu <http://orcid.org/0000-0002-5311-1084>

Meile Minkauskiene <http://orcid.org/0000-0003-1056-0522>

Carolina Carvalho Ribeiro-do-Valle <http://orcid.org/0000-0002-2630-9909>

João Paulo Souza <http://orcid.org/0000-0002-2288-4244>

Séni Kouanda <http://orcid.org/0000-0003-2426-7669>

REFERENCES

- Say L, Chou D, Gemmill A, *et al*. Global causes of maternal death: a who systematic analysis. *Lancet Glob Health* 2014;2:e323–33.
- Hug L, Alexander M, You D, *et al*. National, regional, and global levels and trends in neonatal mortality between 1990 and 2017, with scenario-based projections to 2030: a systematic analysis. *Lancet Glob Health* 2019;7:e710–20.
- Rai SK, Kant S, Srivastava R, *et al*. Causes of and contributors to infant mortality in a rural community of North India: evidence from verbal and social autopsy. *BMJ Open* 2017;7:e012856.
- Fottrell E, Osrin D, Alcock G, *et al*. Cause-Specific neonatal mortality: analysis of 3772 neonatal deaths in Nepal, Bangladesh, Malawi and India. *Arch Dis Child Fetal Neonatal Ed* 2015;100:F439–47.
- Hibberd PL, Hansen NI, Wang ME, *et al*. Trends in the incidence of possible severe bacterial infection and case fatality rates in rural communities in sub-Saharan Africa, South Asia and Latin America, 2010–2013: a multicenter prospective cohort study. *Reprod Health* 2016;13:65.
- UN Inter-agency Group for Child Mortality Estimation. *Levels and trends in child mortality*. New York: UNICEF, 2020. <https://www.unicef.org/media/79371/file/UN-IGME-child-mortality-report-2020.pdf>
- GBD 2016 Causes of Death Collaborators. Global, regional, and national age-sex specific mortality for 264 causes of death, 1980–2016: a systematic analysis for the global burden of disease study 2016. *Lancet* 2017;390:1151–210.
- Vogel JP, Souza JP, Mori R, *et al*. Maternal complications and perinatal mortality: findings of the world Health organization multicountry survey on maternal and newborn health. *BJOG* 2014;121 Suppl 1:76–88.
- Cools P, Melin P. Group B Streptococcus and perinatal mortality. *Res Microbiol* 2017;168:793–801.
- He W, Jin Y, Zhu H, *et al*. Effect of Chlamydia trachomatis on adverse pregnancy outcomes: a meta-analysis. *Arch Gynecol Obstet* 2020;302:553–67.
- Bellizzi S, Bassat Q, Ali MM, *et al*. Effect of puerperal infections on early neonatal mortality: a secondary analysis of six demographic and health surveys. *PLoS One* 2017;12:e0170856.
- Knowles SJ, O'Sullivan NP, Meenan AM, *et al*. Maternal sepsis incidence, aetiology and outcome for mother and fetus: a prospective study. *BJOG* 2015;122:663–71.
- Duan R, Xu X, Wang X, *et al*. Perinatal outcome in women with bacterial sepsis: a cross-sectional study from West China. *Medicine* 2019;98:e17751.
- Page JM, Bardsley T, Thorsten V, *et al*. Stillbirth associated with infection in a diverse U.S. cohort. *Obstet Gynecol* 2019;134:1187–96.
- WHO Global Maternal Sepsis Study (GLOSS) Research Group. Frequency and management of maternal infection in health facilities in 52 countries (GLOSS): a 1-week inception cohort study. *Lancet Glob Health* 2020;8:e661–71.
- The World Bank. World bank country and lending groups – world bank data help desk, 2019. Available: <https://datahelpdesk.worldbank.org/knowledgebase/articles/906519-world-bank-country-and-lending-groups> [Accessed 13 Nov 2019].
- Bonet M, Souza JP, Abalos E, *et al*. The global maternal sepsis study and awareness campaign (GLOSS): study protocol. *Reprod Health* 2018;15:16.
- Lawn JE, Gravett MG, Nunes TM, *et al*. Global report on preterm birth and stillbirth (1 of 7): definitions, description of the burden and opportunities to improve data. *BMC Pregnancy Childbirth* 2010;10 Suppl 1:S1.
- Blencowe H, Cousens S, Jassir FB, *et al*. National, regional, and worldwide estimates of stillbirth rates in 2015, with trends from 2000: a systematic analysis. *Lancet Glob Health* 2016;4:e98–108.
- Santos JP, Pileggi-Castro C, Camelo JS, *et al*. Neonatal near miss: a systematic review. *BMC Pregnancy Childbirth* 2015;15:320.
- Pileggi-Castro C, Camelo JS, Perdoná GC, *et al*. Development of criteria for identifying neonatal near-miss cases: analysis of two who multicountry cross-sectional studies. *BJOG* 2014;121 Suppl 1:110–8.
- Dey S, Raheem E. Multilevel multinomial logistic regression model for identifying factors associated with anemia in children 6–59 months in northeastern states of India. *Cogent Mathematics* 2016;3:1159798.
- Akombi BJ, Renzaho AM. Perinatal mortality in sub-Saharan Africa: a meta-analysis of demographic and health surveys. *Ann Glob Health* 2019;85:106.
- Alliance for Maternal and Newborn Health Improvement (AMANHI) mortality study group. Population-based rates, timing, and causes of maternal deaths, stillbirths, and neonatal deaths in South Asia and sub-Saharan Africa: a multi-country prospective cohort study. *Lancet Glob Health* 2018;6:e1297–308.
- Tekelab T, Choienta C, Smith R, *et al*. Incidence and determinants of neonatal near miss in South Ethiopia: a prospective cohort study. *BMC Pregnancy Childbirth* 2020;20:354.
- de Lima THB, Katz L, Kassab SB, *et al*. Neonatal near miss determinants at a maternity hospital for high-risk pregnancy in northeastern Brazil: a prospective study. *BMC Pregnancy Childbirth* 2018;18:401.
- United Nations Inter-agency Group for Child Mortality Estimation (UN IGME). *A neglected tragedy: the global burden of stillbirths*. New York: UNICEF, 2020. <https://data.unicef.org/resources/a-neglected-tragedy-stillbirth-estimates-report/>
- Edwards MS. Adverse fetal outcomes: expanding the role of infection. *JAMA* 2014;311:1115–6.
- Munabi-Babigumira S, Glenton C, Lewin S, *et al*. Factors that influence the provision of intrapartum and postnatal care by skilled birth attendants in low- and middle-income countries: a qualitative evidence synthesis. *Cochrane Database Syst Rev* 2017;11:CD011558.
- Bradley S, Kamwendo F, Chipeta E, *et al*. Too few staff, too many patients: a qualitative study of the impact on obstetric care providers and on quality of care in Malawi. *BMC Pregnancy Childbirth* 2015;15:65.
- Zanardi DM, Parpinelli MA, Haddad SM, *et al*. Adverse perinatal outcomes are associated with severe maternal morbidity and mortality: evidence from a national multicentre cross-sectional study. *Arch Gynecol Obstet* 2019;299:645–54.
- Goldenberg RL, McClure EM, Saleem S. Improving pregnancy outcomes in low- and middle-income countries. *Reprod Health* 2018;15.
- Ayala-Ramirez P, Serrano N, Barrera V, *et al*. Risk factors and fetal outcomes for preeclampsia in a Colombian cohort. *Heliyon* 2020;6:e05079.
- Brizuela V, Bonet M, Trigo Romero CL, *et al*. Early evaluation of the 'STOP SEPSIS!' WHO Global Maternal Sepsis Awareness Campaign implemented for healthcare providers in 46 low, middle and high-income countries. *BMJ Open* 2020;10:e036338.