

## ORIGINAL ARTICLE

# Why are babies weaned early? Data from a prospective population based cohort study

C M Wright, K N Parkinson, R F Drewett



A fuller version of this paper (including tables 1 and 4) appears on the ADC website ([www.archdischild.com/supplemental](http://www.archdischild.com/supplemental))

See end of article for authors' affiliations

Correspondence to:  
Dr C M Wright, Senior Lecturer/Consultant in Community Child Health, PEACH Unit, QMH Tower, Yorkhill Hospitals, Glasgow G3 8SJ, UK; [charlotte.wright@clinmed.gla.ac.uk](mailto:charlotte.wright@clinmed.gla.ac.uk)

Accepted 2 December 2003

*Arch Dis Child* 2004;**89**:813–816. doi: 10.1136/adc.2003.038448

**Background:** The recommended age of introduction of solids food to the diet of infants (weaning) has recently been increased in the UK to 6 months, but most babies are still weaned before the age of 4 months.

**Aims:** To examine what predicts the age of weaning and how this relates to weight gain and morbidity using data from a population based cohort.

**Methods:** Parents of 923 term infants born in a defined geographical area and recruited shortly after birth were studied prospectively using postal questionnaires, weaning diaries, and routinely collected weights, of whom 707 (77%) returned data on weaning.

**Results:** The median age of first weaning solids was 3.5 months, with 21% commencing before 3 months and only 6% after 4 months of age. Infants progressed quickly to regular solids with few reported difficulties, even when weaned early. Most parents did not perceive professional advice or written materials to be a major influence. The strongest independent predictors of earlier age at weaning were rapid weight gain to age 6 weeks, lower socioeconomic status, the parents' perception that their baby was hungry, and feeding mode. Weight gain after 6 weeks was unrelated to age of weaning. Babies weaned before 3 months, compared to after 4 months, had an increased risk of diarrhoea.

**Conclusions:** Social factors had some influence on when weaning solids were introduced, but the great majority of all infants were established on solids before the previously recommended age of 4 months, without difficulty. Earlier weaning was associated with an increased rate of minor morbidity.

The introduction of complementary foods to the diet (weaning) is a critical nutritional stage in an infant's life and the optimal age for this has been much debated.<sup>1</sup> The decision when to wean must balance the risk that weaning too early will stress the immature gut, kidneys, and immune system<sup>2–5</sup> as well as decreasing exposure to the protective effects of breast milk, while weaning too late may result in under-nutrition<sup>6–7</sup> and feeding problems.<sup>8–9</sup> Until recently the UK officially recommended age was not before 4 months,<sup>10</sup> but this has recently been revised to 6 months, in line with WHO recommendations.<sup>11</sup>

Despite this advice, successive infant feeding surveys have shown that the majority of UK children continue to be weaned before the age of 4 months.<sup>12</sup> However, these studies have not generally examined why mothers choose to wean when they do and how infants respond to weaning at different ages. As part of a large scale prospective study of feeding and growth in infancy we set out to explore these issues, as well as the possible associations with growth and morbidity.

## METHODS

The Millennium Baby Study recruited subjects shortly after birth between June 1999 and May 2000. All babies born to Gateshead resident mothers in 34 prespecified weeks were eligible for recruitment. Parents then received questionnaires at 6 weeks, and 4, 8, and 12 months, which all included questions to be completed once complementary solids had been commenced. These asked the age when weaning solids were first given, as well five questions exploring why, answered using a five point Likert scale (strongly agree to

strongly disagree). Each questionnaire also asked whether any breast milk was being given at that age, whether the child had seen their family doctor, suffered a cold, diarrhoea, a rash or a chest infection, or been admitted to hospital.

Families were also issued with a parent held record which included a self carbonating weaning diary. Parents completed this when the first five solid feeds were given and returned it with the next questionnaire. For each feed the parents recorded the date, type of food, and how the child responded, as free text; this was subsequently coded as "positive", "negative", or "indifferent".

Parents also transcribed routine baby clinic weights from their parent held record onto each questionnaire; subjects were weighed at a health check at the age of 13 months.

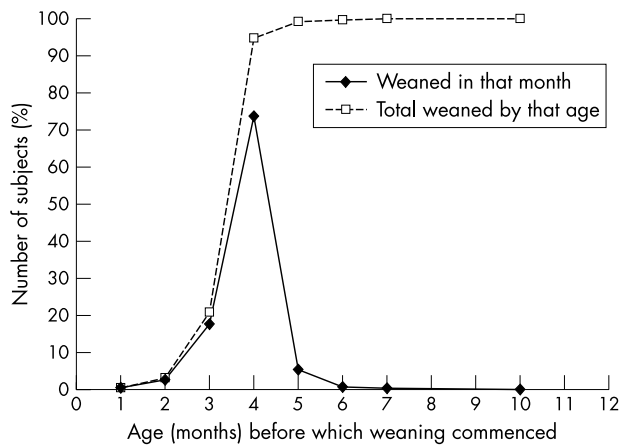
For this analysis, infants born before 37 weeks gestation were excluded, as well as the few infants from minority groups with different weaning customs from the rest of the population.

## Analysis

All weights were converted into standard deviation (SD) scores compared to the UK 1990 growth reference.<sup>13–14</sup> Weight gain was measured using the Thrive Index (TI), a measure of change in weight SD over time, adjusted for regression to the mean.<sup>15</sup>

Sustained Faltering growth was defined as a weight gain (TI) below the 5th centile, persisting across two of four age bands in the first year.

Socioeconomic information collected at recruitment was used to dichotomise families into affluent (homeowner, car owner, and one or more employed parents) and deprived



**Figure 1** Age at first weaning solids.

(one or more of: rented housing, no car, no employed parent).

**RESULTS**

Of the 923 eligible subjects, 707 (77%) mothers returned questionnaire data on weaning and 604 (65%) completed weaning diaries. Subjects without weaning data were significantly more deprived compared to the whole cohort (table 1; see web version).

The median age at which parents reported first giving solids was 15 weeks (interquartile range = 13–16; see fig 1); 146 (21%) children received solids before 3 months (13

weeks), but only 41 (6%) after 4 months (17.3 weeks). In the weaning diaries, the median age of the first weaning food was 14.6 weeks (13–16 weeks). The geometric mean ( $\pm$ 1SD) interval from first to fifth offer of a weaning food was 4.7 (2.4 to 9.0) days. Infants weaned before 3 months took slightly longer than those weaned at 3–4 months to progress from 1st to 5th solid feed (geometric mean = 5.0 ( $\pm$ 1SD = 2.3 to 11.1 days) versus 4.5 (1.7 to 8.3) days;  $p = 0.08$ ). Those weaned later were no different (4.4 (2.3 to 8.3) days).

The commonest first food offered was baby rice, given by 454 (74%) of mothers; 575 (92%) were commercially produced foods. The child’s reaction to the first food offer was positive for 278 (42%) and negative for 191 (29%), rising to 470 (77%) responding positively to the fifth offer. There was no effect of age at weaning on the child’s reaction.

Weaning before 3 months was associated with male gender, deprivation, and bottle feeding, while continued breast feeding at 4 months and female gender predicted weaning after 4 months (table 2). Earlier weaning was associated with agreeing with the statement “I started solid food because my baby seemed hungry” as well as “my family and friends told me to”, while “a book or leaflet suggested I should” was associated with later weaning (table 3).

Heavier babies were on average weaned earlier, but the strongest predictor was weight gain (Thrive Index) from birth to 6 weeks (table 4; see web version). Weight gain after 6 weeks was unrelated to age at weaning. Sustained faltering growth was seen in 30 (4.2%) children within the first year; none of these had been weaned before 3 months, but they were also significantly less likely to have been weaned after 4 months ( $\chi^2 p = 0.011$ ).

**Table 2** Demographic predictors of early and late weaning

	Total no.	Weaning age			p $\chi^2$
		<3 mth (<13 wk)	3–4 mth	>4 mth (>17.3 wk)	
Gender					
Male	352	58% (85)	49% (253)	34% (14)	0.004
Female	355	41% (61)	51% (267)	69% (27)	
Markers of deprivation					
One or more	303	58% (85)	39% (205)	32% (13)	<0.001
None	404	42% (61)	61% (315)	68% (28)	
Breast fed					
Never	322	60% (85)	44% (223)	4% (14)	<0.001
<6 wk	162	22% (32)	24% (123)	18% (7)	
6 wk–4 mth	71	7% (10)	12% (60)	3% (1)	
>4 mth	133	11% (15)	20% (102)	42% (16)	
No feeding information	19				

**Table 3** Parents’ rating of reasons to commence weaning and the weaning process

Question	Total no.	Response	Weaning age			p $\chi^2$
			Before 3 mth (<13 wk)	3–4 mth	After 4 mth (>17.3 wk)	
<b>I started solid food because:</b>						
Health visitor or doctor advised me	661	Agree*	39% (55)	40% (196)	43% (16)	0.68
A book or leaflet suggested I should	651	Agree*	12% (16)	31% (146)	43% (16)	<0.001
My family and friends told me to	655	Agree*	40% (55)	30% (146)	25% (9)	0.024
I thought it was the right time	681	Agree*	99% (141)	96% (481)	90% (35)	0.017
My baby seemed hungry	678	Agree*	99% (140)	92% (458)	79% (31)	<0.001
<b>Has it been easy to wean your baby onto solid food?</b>	700	Easy†	76% (107)	71% (370)	68% (28)	0.24
I thought my baby started weaning	704	Too early	9% (13)	3% (18)	2% (1)	0.005
		Too late	1% (2)	3% (13)	5% (2)	

\*Includes strongly agree.  
†Includes very easy.

**Table 5** Independent predictors of early and late weaning compared to weaning aged 3–4 months

Question	Response	Early weaners (<13 wk)		Late weaners (>17.3 wk)	
		OR	p	OR	p
Deprivation markers	One or more versus none	1.95	0.0013		
My baby seemed hungry	Strongly agree versus rest	4.1	0.055	0.33	0.01
Breast fed at 4 mth	Yes versus no	0.51	0.038	2.94	0.003
Number in model	649				

Values are odds ratios from logistic regression models, including all other significant predictors, plus weight gain (Thrive Index) from birth to 6 weeks as continuous variable.

All the variables that were individually predictive of either early or later weaning were put together into a logistic regression model, and non-significant variables removed successively in order of diminishing statistical significance. In the final model deprivation, weight gain to 6 weeks and not breast feeding at age 4 months remained significant predictors of early weaning, while agreeing with the statement my “baby was hungry” was of borderline significance. For later weaning, only continued breast feeding at age 4 months and disagreeing with the statement “my baby was hungry” remained significant (table 5).

Infants weaned before 3 months were significantly more likely to suffer diarrhoea and marginally more likely to have seen their GP between 6 weeks and 4 months, after adjustment for feeding mode and deprivation level, but no more likely to suffer other ailments (table 6). There was no influence of age at weaning on illness rates at any other ages; in particular, infants weaned after 4 months were no more likely to have episodes of diarrhoea between the ages of 4 and 8 months than those weaned earlier (data not shown).

**DISCUSSION**

This is the first study to simultaneously examine both social and biological correlates of age of weaning, while tracking the process of weaning in detail, using both questionnaires and weaning diaries. There was some attrition, most commonly in the most deprived families, but since the study took place in a relatively deprived urban borough, those remaining still had deprivation scores representative of the northern region. The proportion weaned before 3 months was comparable to recent UK data, although the proportion weaned before 4 months was even higher.<sup>12</sup> The cohort also had lower rates of breast feeding than the UK as a whole.

The majority of mothers introduced solids between 3 and 4 months and were confident that this was the right time. Mothers who weaned before 3 months seemed aware that they were acting against recommendations, as few cited written or professional influences. The strongest perceived influence was that their baby was hungry. Rapid weight gain

up to the age at weaning was also a strong predictor of early weaning and it seems likely that these babies did feed more avidly, which mothers interpreted as a need for solids. The tendency to early weaning in boys also seems to be a function of their larger size and therefore higher energy requirements and feeding drive. Age at weaning bore no relation to subsequent weight gain, which is well in keeping with recent trial evidence.<sup>18–20</sup> This is important in view of the association between late weaning and failure to thrive observed previously,<sup>21</sup> since this suggests that it is slow weight gain, probably associated with a relatively low drive to feed, that leads to late weaning, not the reverse.

It would be expected that mothers would experience greater difficulty weaning very young babies, but the diaries showed rapid progression with weaning, whenever it commenced. This suggests infants are ready to wean in oromotor terms well before 4 months. The majority of babies did not respond positively to their first taste of weaning solids, but by the fifth occasion, usually within five days of the first, most responded positively.

Babies weaned before 3 months had double the rates of parentally reported diarrhoea and were more likely to see their GP over the age period when solids were being introduced, compared to those weaned after 4 months. While some of the effect on GP consultations can be attributed to differences in deprivation and breast feeding rates, the increased rate of diarrhoea appeared largely independent of these effects. Other minor ailments, not expected to be affected by complementary feeding, did not differ by age of weaning. This makes it unlikely that this simply reflects a tendency for mothers who wean early to either over-report illness in their child or have differing views about what constitutes diarrhoea.

However this still could be a chance finding. The Dundee cohort study<sup>22</sup> found no increase in gastrointestinal infections in those weaned before 12 weeks. In the two Honduras trials of age at weaning, one found slightly increased risks of diarrhoea in those weaned *later*,<sup>20</sup> though the numbers were small and the prevalence of diarrhoea low. A large trial of

**Table 6** Risk of parentally reported morbidity between age 6 weeks and 4 months, by age of weaning

% (no.) aged 6 wk to 4 mth who:	Age of weaning				Unadjusted		Adjusted*	
	Total no.	<3 mth	3–4 mth	>4 mth	OR	p	OR (95% CI)	p
Have seen GP	658	65% (88)	55% (268)	44% (15)	1.54	0.009	1.32 (0.94 to 1.89)†	0.1
Been admitted to hospital	659	10% (14)	7% (34)	9% (3)		0.34		
Had episode of:								
Any diarrhoea	615	31% (39)	19% (87)	14% (4)	1.79	0.004	1.65 (1.09 to 2.5)‡	0.02
Diarrhoea and saw GP	615	18% (23)	11.5%(53)	11% (3)	1.8	0.07		
Cold	644	70% (93)	69% (330)	66% (21)		0.67		
Ear infection	595	6% (7)	6% (25)	8% (2)		0.84		
Rash	605	32% (40)	29% (132)	23% (6)		0.36		
Chest infection	607	19% (24)	15% (67)	21% (6)		0.64		

\*From logistic regression model including other significant predictors.

†Adjusted for deprivation and breast feeding aged 4 months.

‡Adjusted for breast feeding aged 4 months.

promotion of exclusive breast feeding<sup>23</sup> did find a significant reduction in gastrointestinal infections, but it was not possible to disaggregate the effects of age at weaning from those of breast feeding itself.

In conclusion, a majority of mothers introduced complementary foods before the previously recommended age of 4 months and the important influences they recognised were the perceived needs of their baby, rather than external advice. The majority of infants progressed without difficulty to taking regular solids within a few days. However, even with the use of mainly processed weaning foods, early weaning seems to be associated with increased rates of diarrhoea over the weaning period.

## ACKNOWLEDGEMENTS

Our thanks to Jayne Kelly, Anne Trail, Alison Smith, Jane Jarvis, and Ann Pattison for their work on the study, to Philip Lowe for computing support, to Victoria Blaylock for coding and entering the diary data, and to Lawrence Weaver and David Tappin for their comments on the manuscript. The study would not have been possible without the invaluable support of the midwives at the Gateshead and Newcastle maternity units, the health visitors of Gateshead, and the loyal participation of all the parents.

## Authors' affiliations

**C M Wright**, Department of Child Health, University of Glasgow, UK

**K N Parkinson**, Department of Child Health, University of Newcastle upon Tyne, UK

**R F Drewett**, Department of Psychology, University of Durham, UK

Grant support: Henry Smith Charity, SPARKS

## REFERENCES

- 1 **Footo KD**, Marriott LD. Weaning of infants. *Arch Dis Child* 2003;**88**:488–92.
- 2 **Milla P**. The weanling's gut. *Acta Paediatr Scand Suppl* 1986;**323**:5–13.
- 3 **Kelly D**, Phillips A, Elliott E, *et al*. Rise and fall of coeliac disease 1960–85. *Arch Dis Child* 1989;**64**:1157–60.
- 4 **Fergusson D**, Horwood L, Shannon F. Early solid feeding and recurrent childhood eczema: a 10-year longitudinal study. *Pediatrics* 1990;**85**:541–6.
- 5 **Wilson A**, Forsyth J, Greene S, *et al*. Relation of infant diet to childhood health: seven year follow up of cohort of children in Dundee infant feeding study. *BMJ* 1998;**316**:21–5.
- 6 **Dewey KG**, Peerson JM, Brown KH, *et al*. Growth of breast-fed infants deviates from current reference data: a pooled analysis of US, Canadian, and European data sets. World Health Organization Working Group on Infant Growth. *Pediatrics* 1995;**96**:495–503.
- 7 **Whitehead R**, Paul A, Ahmed E. Weaning practices in the United Kingdom and variations in anthropometric development. *Acta Paediatr Scand* 1986;**323**:14–23.
- 8 **Paine P**, Spegiorin C. Prolonged breast feeding related to later solid food acceptance. *Child Care Health Dev* 1983;**9**:321–6.
- 9 **Northstone K**, Emmett P, Nethersole F, *et al*. The effect of age of introduction of too lumpy solids on foods eaten and reported feeding difficulties at 6 and 15 months. *J Hum Nutr Dietet* 2000;**14**:43–54.
- 10 **Committee on Medical Aspects of Food**. *Weaning and the weaning diet*. Health and social subjects. Department of Health, 45. London: HMSO, 1994.
- 11 **Department of Health**. *Infant feeding*. London: Department of Health, 2003. <http://www.doh.gov.uk/infantfeeding/index.htm>.
- 12 **Hamlyn B**, Brooker S, Oleinikova K, *et al*. *Infant feeding 2000*. Department of Health, 2003. <http://www.doh.gov.uk/pdfs/infantreport2000.pdf>.
- 13 **Freeman JV**, Cole TJ, Chinn S, *et al*. Cross sectional stature and weight reference curves for the UK, 1990. *Arch Dis Child* 1995;**73**:17–24.
- 14 **Preece M**, Freeman J, Cole T. Sex differences in weight in infancy: published centile charts have been updated. *BMJ* 1996;**313**:1486.
- 15 **Wright CM**, Waterston A, Matthews JNS, *et al*. What is the normal rate of weight gain in infancy? *Acta Paediatr* 1994;**83**:351–6.
- 16 **Davey Smith G**, Blane D, Bartley M. Explanations for socio-economic differentials in mortality. Evidence from Britain and elsewhere. *Eur J Public Health* 1994;**4**:131–44.
- 17 **Townsend P**, Phillimore P, Beattie A. *Health and deprivation: inequality and the North*. London: Croom Helm, 1988.
- 18 **Mehta K**, Specker B, Bartholmey S, *et al*. Trial on timing of introduction to solids and food type on infant growth. *Pediatrics* 1998;**102**:569–73.
- 19 **Cohen R**, Brown K, Canahuati J, *et al*. Effects of age of introduction of complementary foods on infant breast milk intake, total energy intake, and growth: a randomised intervention study in Honduras. *Lancet* 1994;**343**:288–93.
- 20 **Dewey K**, Cohen R, Brown K, *et al*. Age of introduction of complementary foods and growth of term, low-birth-weight, breast-fed infants: a randomized intervention study in Honduras. *Am J Clin Nutr* 1999;**69**:679–86.
- 21 **Wright C**, Loughridge J, Moore J. Failure to thrive in a population context: two contrasting case control studies of feeding and nutritional status. *Proc Nutr Soc* 2000;**59**:37–45.
- 22 **Forsyth JS**, Ogston SA, Clark A, *et al*. Relation between early introduction of solid food to infants and their weight and illnesses during the first two years of life. *BMJ* 1993;**306**:1572–6.
- 23 **Kramer MS**, Chalmers B, Hodnett ED, *et al*. Promotion of Breastfeeding Intervention Trial (PROBIT): a randomized trial in the Republic of Belarus. *JAMA* 2001;**285**:413–20.
- 24 **Fergusson D**. Asthma and infant diet. *Arch Dis Child* 1983;**58**:48–51.
- 25 **Kramer MS**, Guo T, Platt RW, *et al*. Breastfeeding and infant growth: biology or bias? *Pediatrics* 2002;**110**:343–7.



Jack Maypole



## ORIGINAL ARTICLE

# Why are babies weaned early? Data from a prospective population based cohort study

C M Wright, K N Parkinson, R F Drewett

Cite this article as: *Arch Dis Child* 2004;**89**:813–816. doi: 10.1136/adc.2003.038448

See end of article for authors' affiliations

Correspondence to:  
Dr C M Wright, Senior Lecturer/Consultant in Community Child Health, PEACH Unit, QMH Tower, Yorkhill Hospitals, Glasgow G3 8SJ, UK; charlotte.wright@clinmed.gla.ac.uk

Accepted  
2 December 2003

**Background:** The recommended age of introduction of solids food to the diet of infants (weaning) has recently been increased in the UK to 6 months, but most babies are still weaned before the age of 4 months.

**Aims:** To examine what predicts the age of weaning and how this relates to weight gain and morbidity using data from a population based cohort.

**Methods:** Parents of 923 term infants born in a defined geographical area and recruited shortly after birth were studied prospectively using postal questionnaires, weaning diaries, and routinely collected weights, of whom 707 (77%) returned data on weaning.

**Results:** The median age of first weaning solids was 3.5 months, with 21% commencing before 3 months and only 6% after 4 months of age. Infants progressed quickly to regular solids with few reported difficulties, even when weaned early. Most parents did not perceive professional advice or written materials to be a major influence. The strongest independent predictors of earlier age at weaning were rapid weight gain to age 6 weeks, lower socioeconomic status, the parents' perception that their baby was hungry, and feeding mode. Weight gain after 6 weeks was unrelated to age of weaning. Babies weaned before 3 months, compared to after 4 months, had an increased risk of diarrhoea.

**Conclusions:** Social factors had some influence on when weaning solids were introduced, but the great majority of all infants were established on solids before the previously recommended age of 4 months, without difficulty. Earlier weaning was associated with an increased rate of minor morbidity.

The introduction of complementary foods to the diet (weaning) is a critical nutritional stage in an infant's life and the optimal age for this has been much debated.<sup>1</sup> The decision when to wean must balance the risk that weaning too early will stress the immature gut, kidneys, and immune system<sup>2–5</sup> as well as decreasing exposure to the protective effects of breast milk, while weaning too late may result in under-nutrition<sup>6–7</sup> and feeding problems.<sup>8–9</sup> Until recently the UK officially recommended age was not before 4 months,<sup>10</sup> but this has recently been revised to 6 months, in line with WHO recommendations.<sup>11</sup>

Despite this advice, successive infant feeding surveys have shown that the majority of UK children continue to be weaned before the age of 4 months.<sup>12</sup> However, these studies have not generally examined why mothers choose to wean when they do and how infants respond to weaning at different ages. As part of a large scale prospective study of feeding and growth in infancy we set out to explore these issues, as well as the possible associations with growth and morbidity.

## METHODS

The Millennium Baby Study recruited subjects shortly after birth between June 1999 and May 2000. All babies born to Gateshead resident mothers in 34 prespecified weeks were eligible for recruitment. Parents then received questionnaires at 6 weeks, and 4, 8, and 12 months, which all included questions to be completed once complementary solids had been commenced. These asked the age when weaning solids were first given, as well five questions exploring why, answered using a five point Likert scale (strongly agree to strongly disagree). Each questionnaire also asked whether any breast milk was being given at that age, whether the child had seen their family doctor, suffered a cold, diarrhoea, a rash or a chest infection, or been admitted to hospital.

Families were also issued with a parent held record which included a self carbonating weaning diary. Parents completed this when the first five solid feeds were given and returned it with the next questionnaire. For each feed the parents recorded the date, type of food, and how the child responded, as free text; this was subsequently coded as "positive", "negative", or "indifferent".

Parents also transcribed routine baby clinic weights from their parent held record onto each questionnaire; subjects were weighed at a health check at the age of 13 months.

For this analysis, infants born before 37 weeks gestation were excluded, as well as the few infants from minority groups with different weaning customs from the rest of the population.

## Analysis

All weights were converted into standard deviation (SD) scores compared to the UK 1990 growth reference.<sup>13–14</sup> Where very few weights were returned for a child, or where they were extreme or discrepant, these were checked against the self carbonated weight form (retrieved from the parent held record at the 13 month check) and corrected or deleted as appropriate. For each child, the weight nearest to a range of target ages (6 weeks, 3, 6, and 12 months), and within a pre-stated age range (4–9, 9–16, 16–38, 39–77 weeks) was identified.

Weight gain was measured using the Thrive Index (TI), a measure of change in weight SD over time, adjusted for regression to the mean.<sup>15</sup>

The Thrive Index for any time interval is calculated as follows:

$$TI = SDS_{\text{time2}} - r \times SDS_{\text{time1}}$$

**Table 1** Demographic characteristics of study cohort

Variables		Subjects with weaning information	Subjects without weaning information	p, $\chi^2$ trend	Whole cohort
Total number		707	216		923
Boys		352 (50%)	113 (48%)	NS	465 (50.4%)
Number of deprivation markers*	3	92 (13%)	74 (34%)	<0.0001	166 (18%)
	2	106 (15%)	31 (14%)		137 (15%)
	1	105 (15%)	44 (67%)		149 (16%)
	0	404 (57%)	67 (31%)		471 (51%)
Townsend score quintile†	1 (most affluent)	132 (19%)	20 (9%)	0.001	152 (17%)
	2	150 (21%)	43 (20)		193 (21%)
	3	161 (23%)	51 (24%)		212 (23%)
	4	135 (19%)	52 (24%)		187 (20%)
	5 (most deprived)	124 (18%)	49 (23%)		173 (19%)
Maternal educational qualifications	Higher education	138 (12%)	21 (10%)	0.004	159 (17%)
	School >16 years	88 (12%)	23 (11%)		111 (12%)
	GCSE only	355 (50%)	90 (42%)		445 (48%)
	No qualifications	111 (16%)	79 (37%)		190 (21%)
	Other	15 (2%)	1 (0.5%)		16 (2%)
Feeding mode‡	Sole bottle feeding	332 (47%)	127 (59%)	<0.0001	449 (50%)
	Breast fed <6 wk	162 (24%)	62 (29%)		224 (25%)
	6 wk–4 mth	71 (10%)	18 (8%)		89 (10%)
	>4 mth	133 (19%)	3 (1.4%)		136 (15%)

\*One each for rented housing, no car or unemployed parent; missing for two subjects.

†Missing for six subjects.

‡Missing for 25 subjects.

where  $r$  is the regression coefficient for the whole population for that time interval. The regression coefficients used were, in this case, drawn from the entire population under study, since they represented a substantial normative population.

The TI values used in this study and their equations were:

$$\text{Birth to 6 weeks} = \text{Weight SDS}_{6w} - (\text{SDS}_{\text{birth}} \times 0.68)$$

$$\text{Birth to 3 months} = \text{Weight SDS}_{3m} - (\text{SDS}_{\text{birth}} \times 0.54)$$

$$\text{Birth to 6 months} = \text{Weight SDS}_{6m} - (\text{SDS}_{\text{birth}} \times 0.46)$$

$$\text{Birth to 12 months} = \text{Weight SDS}_{12m} - (\text{SDS}_{\text{birth}} \times 0.38)$$

$$6 \text{ weeks to 12 months} = \text{Weight SDS}_{12m} - (\text{Weight SDS}_{6w} \times 0.60)$$

Sustained Faltering growth was defined as a weight gain (TI) below the 5th centile, persisting across two of four age bands in the first year.

Socioeconomic information collected at recruitment was used to dichotomise families into affluent (homeowner, car owner, and one or more employed parents) and deprived (one or more of: rented housing, no car, no employed

parent). These three variables are standard census items and have been shown in surveys<sup>16</sup> and aggregated data<sup>17</sup> to provide a useful composite measure of medium term socio-economic status. In addition, the child's postcode at birth was used to identify their census enumeration district and the Townsend score for that enumeration district was recorded.<sup>17</sup> These scores were then divided into five categories corresponding to the quintiles for the Northern region (using 1991 census data), to provide a finer grain classification if required.

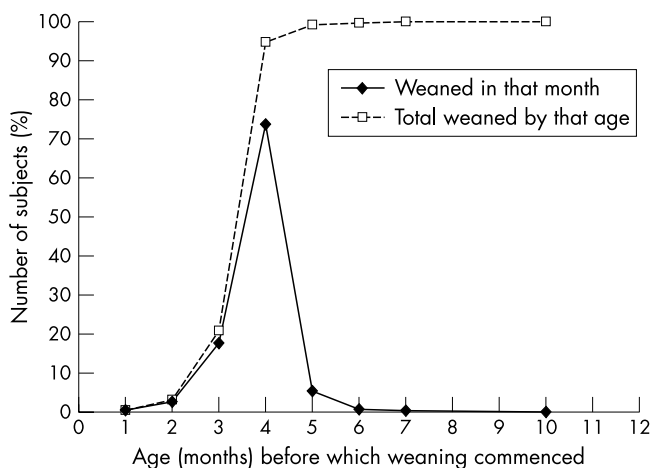
## RESULTS

In the 34 recruiting weeks 1254 babies were born, of whom 1011 families with 1029 babies (82% of those eligible) agreed to join the study. Of these, 65 subjects born before 37 weeks' gestation, 5 Moslem, and 33 Orthodox Jewish subjects were excluded. Of the 923 eligible subjects, 707 (77%) mothers returned questionnaire data on weaning and 604 (65%) completed weaning diaries. Subjects without weaning data were significantly more deprived compared to the whole cohort (table 1).

The median age at which parents reported first giving solids was 15 weeks (interquartile range = 13–16; see fig 1); 146 (21%) children received solids before 3 months (13 weeks), but only 41 (6%) after 4 months (17.3 weeks). In the weaning diaries, the median age of the first weaning food was 14.6 weeks (13–16 weeks). The geometric mean ( $\pm$  1SD) interval from first to fifth offer of a weaning food was 4.7 (2.4 to 9.0) days. Infants weaned before 3 months took slightly longer than those weaned at 3–4 months to progress from 1st to 5th solid feed (geometric mean = 5.0 ( $\pm$  1SD = 2.3 to 11.1 days) versus 4.5 (1.7 to 8.3) days;  $p = 0.08$ ). Those weaned later were no different (4.4 (2.3 to 8.3) days).

The commonest first food offered was baby rice, given by 454 (74%) of mothers; 575 (92%) were commercially produced foods. The child's reaction to the first food offer was positive for 278 (42%) and negative for 191 (29%), rising to 470 (77%) responding positively to the fifth offer. There was no effect of age at weaning on the child's reaction.

Weaning before 3 months was associated with male gender, deprivation, and bottle feeding, while continued breast feeding at 4 months and female gender predicted



**Figure 1** Age at first weaning solids.

**Table 2** Demographic predictors of early and late weaning

	Total no.	Weaning age			p $\chi^2$
		<3 mth (<13 wk)	3–4 mth	>4 mth (>17.3 wk)	
Gender					
Male	352	58% (85)	49% (253)	34% (14)	0.004
Female	355	41% (61)	51% (267)	69% (27)	
Markers of deprivation					
One or more	303	58% (85)	39% (205)	32% (13)	<0.001
None	404	42% (61)	61% (315)	68% (28)	
Breast fed					
Never	322	60% (85)	44% (223)	4% (14)	<0.001
<6 wk	162	22% (32)	24% (123)	18% (7)	
6 wk–4 mth	71	7% (10)	12% (60)	3% (1)	
>4 mth	133	11% (15)	20% (102)	42% (16)	
No feeding information	19				

weaning after 4 months (table 2). Earlier weaning was associated with agreeing with the statement “I started solid food because my baby seemed hungry” as well as “my family and friends told me to”, while “a book or leaflet suggested I should” was associated with later weaning (table 3).

Heavier babies were on average weaned earlier, but the strongest predictor was weight gain (Thrive Index) from birth to 6 weeks (table 4). Weight gain after 6 weeks was unrelated to age at weaning. Sustained faltering growth was seen in 30 (4.2%) children within the first year; none of these had been weaned before 3 months, but they were also significantly less likely to have been weaned after 4 months ( $\chi^2$  p = 0.011).

All the variables that were individually predictive of either early or later weaning were put together into a logistic regression model, and non-significant variables removed successively in order of diminishing statistical significance. In the final model deprivation, weight gain to 6 weeks and not breast feeding at age 4 months remained significant predictors of early weaning, while agreeing with the statement my “baby was hungry” was of borderline significance. For later weaning, only continued breast feeding at age 4 months and disagreeing with the statement “my baby was hungry” remained significant (table 5).

Infants weaned before 3 months were significantly more likely to suffer diarrhoea and marginally more likely to have seen their GP between 6 weeks and 4 months, after adjustment for feeding mode and deprivation level, but no more likely to suffer other ailments (table 6). There was no influence of age at weaning on illness rates at any other ages; in particular, infants weaned after 4 months were no more likely to have episodes of diarrhoea between the

ages of 4 and 8 months than those weaned earlier (data not shown).

## DISCUSSION

This is the first study to simultaneously examine both social and biological correlates of age of weaning, while tracking the process of weaning in detail, using both questionnaires and weaning diaries. There was some attrition, most commonly in the most deprived families, but since the study took place in a relatively deprived urban borough, those remaining still had deprivation scores representative of the northern region. The proportion weaned before 3 months was comparable to recent UK data, although the proportion weaned before 4 months was even higher.<sup>12</sup> The cohort also had lower rates of breast feeding than the UK as a whole.

The majority of mothers introduced solids between 3 and 4 months and were confident that this was the right time. Mothers who weaned before 3 months seemed aware that they were acting against recommendations, as few cited written or professional influences. The strongest perceived influence was that their baby was hungry. Rapid weight gain up to the age at weaning was also a strong predictor of early weaning and it seems likely that these babies did feed more avidly, which mothers interpreted as a need for solids. The tendency to early weaning in boys also seems to be a function of their larger size and therefore higher energy requirements and feeding drive. Age at weaning bore no relation to subsequent weight gain, which is well in keeping with recent trial evidence.<sup>18–20</sup> This is important in view of the association between late weaning and failure to thrive observed previously,<sup>21</sup> since this suggests that it is slow weight gain,

**Table 3** Parents' rating of reasons to commence weaning and the weaning process

Question	Total no.	Response	Weaning age			p $\chi^2$
			Before 3 mth (<13 wk)	3–4 mth	After 4 mth (>17.3 wk)	
<b>I started solid food because:</b>						
Health visitor or doctor advised me	661	Agree*	39% (55)	40% (196)	43% (16)	0.68
A book or leaflet suggested I should	651	Agree*	12% (16)	31% (146)	43% (16)	<0.001
My family and friends told me to	655	Agree*	40% (55)	30% (146)	25% (9)	0.024
I thought it was the right time	681	Agree*	99% (141)	96% (481)	90% (35)	0.017
My baby seemed hungry	678	Agree*	99% (140)	92% (458)	79% (31)	<0.001
<b>Has it been easy to wean your baby onto solid food?</b>	700	Easy†	76% (107)	71% (370)	68% (28)	0.24
I thought my baby started weaning	704	Too early	9% (13)	3% (18)	2% (1)	0.005
		Too late	1% (2)	3% (13)	5% (2)	

\*Includes strongly agree.

†Includes very easy.

**Table 4** Correlations of age at first solids with weight SD scores and weight gain (TI) in the first year

	Weight SDS at age			Weight gain (Thrive Index)	
	Birth	6 wk	3 mth	Birth to 6 wk	6 wk to 12 mth
Correlation coefficient	-0.08	-0.14	-0.14	-0.17	-0.03
Sig. (2-tailed)	0.04	<0.001	<0.001	<0.001	0.45
n	707	678	655	678	630

probably associated with a relatively low drive to feed, that leads to late weaning, not the reverse.

It would be expected that mothers would experience greater difficulty weaning very young babies, but the diaries showed rapid progression with weaning, whenever it commenced. This suggests infants are ready to wean in oromotor terms well before 4 months. It has been suggested that the tendency of infants to reject new foods becomes an increasing problem if weaning is delayed.<sup>8,9</sup> We did not find any effect of age on the infants response to new foods, but so few were weaned after the age of 4 months we could not explore this properly. The majority of babies did not respond positively to their first taste of weaning solids, but by the fifth occasion, usually within five days of the first, most responded positively.

Babies weaned before 3 months had double the rates of parentally reported diarrhoea and were more likely to see their GP over the age period when solids were being introduced, compared to those weaned after 4 months. While some of the effect on GP consultations can be attributed to differences in deprivation and breast feeding rates, the increased rate of diarrhoea appeared largely independent of these effects. The definition of diarrhoea in this study was left to parents, with the possibility of very different understandings of the term, but nearly two thirds of episodes resulted in a GP consultation, suggesting that they were not trivial. This lack of a precise definition means there must be

uncertainty about the true rate of diarrhoeal illness, but would not be expected to vary within individuals; and the increased rates of diarrhoea were seen only in the period when weaning was commencing. Other minor ailments, not expected to be affected by complementary feeding, did not differ by age of weaning. This makes it unlikely that this simply reflects a tendency for mothers who wean early to either over-report illness in their child or have differing views about what constitutes diarrhoea. Another issue is that the morbidity data relied on parental recall, but in this study parents were only being asked to recall quite recent events, making accurate recall more likely.

However this still could be a chance finding. The Dundee cohort study<sup>22</sup> found no increase in gastrointestinal infections in those weaned before 12 weeks. In the two Honduras trials of age at weaning, one found slightly increased risks of diarrhoea in those weaned *later*,<sup>20</sup> though the numbers were small and the prevalence of diarrhoea low. A large trial of promotion of exclusive breast feeding<sup>23</sup> did find a significant reduction in gastrointestinal infections, but it was not possible to disaggregate the effects of age at weaning from those of breast feeding itself.

Are the increased rates of morbidity associated with early weaning found across all studies important enough to continue to try to push the age of weaning upwards? Between 1995 and 2000 in the UK the proportion of infants weaned before 13 weeks has halved, but the proportion

**Table 5** Independent predictors of early and late weaning compared to weaning aged 3–4 months

Question	Response	Early weaners (<13 wk)		Late weaners (>17.3 wk)	
		OR	p	OR	p
Deprivation markers	One or more versus none	1.95	0.0013		
My baby seemed hungry	Strongly agree versus rest	4.1	0.055	0.33	0.01
Breast fed at 4 mth	Yes versus no	0.51	0.038	2.94	0.003
Number in model	649				

Values are odds ratios from logistic regression models, including all other significant predictors, plus weight gain (Thrive Index) from birth to 6 weeks as continuous variable.

**Table 6** Risk of parentally reported morbidity between age 6 weeks and 4 months, by age of weaning

% (no.) aged 6 wk to 4 mth who:	Age of weaning				Unadjusted		Adjusted*	
	Total no.	<3 mth	3–4 mth	>4 mth	OR	p	OR (95% CI)	p
Have seen GP	658	65% (88)	55% (268)	44% (15)	1.54	0.009	1.32 (0.94 to 1.89)†	0.1
Been admitted to hospital	659	10% (14)	7% (34)	9% (3)		0.34		
Had episode of:								
Any diarrhoea	615	31% (39)	19% (87)	14% (4)	1.79	0.004	1.65 (1.09 to 2.5)‡	0.02
Diarrhoea and saw GP	615	18% (23)	11.5% (53)	11% (3)	1.8	0.07		
Cold	644	70% (93)	69% (330)	66% (21)		0.67		
Ear infection	595	6% (7)	6% (25)	8% (2)		0.84		
Rash	605	32% (40)	29% (132)	23% (6)		0.36		
Chest infection	607	19% (24)	15% (67)	21% (6)		0.64		

\*From logistic regression model including other significant predictors.

†Adjusted for deprivation and breast feeding aged 4 months.

‡Adjusted for breast feeding aged 4 months.



weaned before 17 weeks decreased by only 6 percentage points.<sup>12</sup> The Dundee study did find significantly increased rates of respiratory illness, cough, eczema, and wheeze associated with early weaning at different ages<sup>5, 22</sup> but no similar trend at the many other time points studied. A New Zealand cohort study has found an increased risk of eczema in children weaned before 4 months,<sup>4</sup> but not of asthma.<sup>24</sup> All these studies, as well as our own, are observational and can only describe associations, without attributing cause. The few small trials that have specifically varied the age of weaning, have in fact found a weak tendency to higher morbidity in those weaned later.<sup>19, 20</sup> These, and one other trial<sup>18</sup> also found neither benefit nor disbenefit in terms of weight gain from weaning prior to 6 months. It is of note that these findings differ from the results of merely observational studies of weight gain which predominantly find better weight gain in those weaned earlier, presumably due to reverse causation.<sup>5-7, 22, 25, 26</sup> Thus it should not be assumed that other associations seen in observational studies, however biologically plausible, are necessarily causal.

In conclusion, a majority of mothers introduced complementary foods before the previously recommended age of 4 months and the important influences they recognised were the perceived needs of their baby, rather than external advice. The majority of infants progressed without difficulty to taking regular solids within a few days. However, even with the use of mainly processed weaning foods, early weaning seems to be associated with increased rates of diarrhoea over the weaning period.

## ACKNOWLEDGEMENTS

Our thanks to Jayne Kelly, Anne Trail, Alison Smith, Jane Jarvis, and Ann Pattison for their work on the study, to Philip Lowe for computing support, to Victoria Blaylock for coding and entering the diary data, and to Lawrence Weaver and David Tappin for their comments on the manuscript. The study would not have been possible without the invaluable support of the midwives at the Gateshead and Newcastle maternity units, the health visitors of Gateshead, and the loyal participation of all the parents.

## Authors' affiliations

**C M Wright**, Department of Child Health, University of Glasgow, UK  
**K N Parkinson**, Department of Child Health, University of Newcastle upon Tyne, UK

**R F Drewett**, Department of Psychology, University of Durham, UK

Grant support: Henry Smith Charity, SPARKS

## REFERENCES

- 1 **Footo KD**, Marriott LD. Weaning of infants. *Arch Dis Child* 2003;**88**:488-92.
- 2 **Milla P**. The weanling's gut. *Acta Paediatr Scand Suppl* 1986;**323**:5-13.
- 3 **Kelly D**, Phillips A, Elliott E, *et al*. Rise and fall of coeliac disease 1960-85. *Arch Dis Child* 1989;**64**:1157-60.
- 4 **Fergusson D**, Horwood L, Shannon F. Early solid feeding and recurrent childhood eczema: a 10-year longitudinal study. *Pediatrics* 1990;**85**:541-6.
- 5 **Wilson A**, Forsyth J, Greene S, *et al*. Relation of infant diet to childhood health: seven year follow up of cohort of children in Dundee infant feeding study. *BMJ* 1998;**316**:21-5.
- 6 **Dewey KG**, Peerson JM, Brown KH, *et al*. Growth of breast-fed infants deviates from current reference data: a pooled analysis of US, Canadian, and European data sets. World Health Organization Working Group on Infant Growth. *Pediatrics* 1995;**96**:495-503.
- 7 **Whitehead R**, Paul A, Ahmed E. Weaning practices in the United Kingdom and variations in anthropometric development. *Acta Paediatr Scand* 1986;**323**:14-23.
- 8 **Paine P**, Spegiorin C. Prolonged breast feeding related to later solid food acceptance. *Child Care Health Dev* 1983;**9**:321-6.
- 9 **Northstone K**, Emmett P, Nethersole F, *et al*. The effect of age of introduction of too lumpy solids on foods eaten and reported feeding difficulties at 6 and 15 months. *J Hum Nutr Dietet* 2000;**14**:43-54.
- 10 **Committee on Medical Aspects of Food**. *Weaning and the weaning diet*. Health and social subjects. Department of Health, 45. London: HMSO, 1994.
- 11 **Department of Health**. *Infant feeding*. London: Department of Health, 2003. <http://www.doh.gov.uk/infantfeeding/index.htm>.
- 12 **Hamlyn B**, Brooker S, Oleinikova K, *et al*. *Infant feeding 2000*. Department of Health, 2003. <http://www.doh.gov.uk/pdfs/infantreport2000.pdf>.
- 13 **Freeman JV**, Cole TJ, Chinn S, *et al*. Cross sectional stature and weight reference curves for the UK, 1990. *Arch Dis Child* 1995;**73**:17-24.
- 14 **Preece M**, Freeman J, Cole T. Sex differences in weight in infancy: published centile charts have been updated. *BMJ* 1996;**313**:1486.
- 15 **Wright CM**, Waterston A, Matthews JNS, *et al*. What is the normal rate of weight gain in infancy? *Acta Paediatr* 1994;**83**:351-6.
- 16 **Davey Smith G**, Blane D, Bartley M. Explanations for socio-economic differentials in mortality. Evidence from Britain and elsewhere. *Eur J Public Health* 1994;**4**:131-44.
- 17 **Townsend P**, Phillimore P, Beattie A. *Health and deprivation: inequality and the North*. London: Croom Helm, 1988.
- 18 **Mehta K**, Specker B, Bartholmey S, *et al*. Trial on timing of introduction to solids and food type on infant growth. *Pediatrics* 1998;**102**:569-73.
- 19 **Cohen R**, Brown K, Canahuati J, *et al*. Effects of age of introduction of complementary foods on infant breast milk intake, total energy intake, and growth: a randomised intervention study in Honduras. *Lancet* 1994;**343**:288-93.
- 20 **Dewey K**, Cohen R, Brown K, *et al*. Age of introduction of complementary foods and growth of term, low-birth-weight, breast-fed infants: a randomized intervention study in Honduras. *Am J Clin Nutr* 1999;**69**:679-86.
- 21 **Wright C**, Loughridge J, Moore J. Failure to thrive in a population context: two contrasting case control studies of feeding and nutritional status. *Proc Nutr Soc* 2000;**59**:37-45.
- 22 **Forsyth JS**, Ogston SA, Clark A, *et al*. Relation between early introduction of solid food to infants and their weight and illnesses during the first two years of life. *BMJ* 1993;**306**:1572-6.
- 23 **Kramer MS**, Chalmers B, Hodnett ED, *et al*. Promotion of Breastfeeding Intervention Trial (PROBIT): a randomized trial in the Republic of Belarus. *JAMA* 2001;**285**:413-20.
- 24 **Fergusson D**. Asthma and infant diet. *Arch Dis Child* 1983;**58**:48-51.
- 25 **Kramer MS**, Guo T, Platt RW, *et al*. Breastfeeding and infant growth: biology or bias? *Pediatrics* 2002;**110**:343-7.