

Biologic therapies for juvenile arthritis

N Wilkinson, G Jackson, J Gardner-Medwin

Arch Dis Child 2003;**88**:186–191

A group of therapies with exciting potential has emerged for children and young people with severe juvenile idiopathic arthritis (JIA) uncontrolled by conventional disease modifying drugs. Theoretical understanding from molecular biologic research has identified specific targets within pathophysiological pathways that control rheumatoid arthritis (RA) and JIA. This review identifies the pathways of autoimmunity to begin to show how biologic agents have been produced to replicate, mimic, or block culpable molecules and so promote or inhibit cellular activity or proliferation. Of these agents, cytokine antagonists have shown greatest promise, and early clinical studies of tumour necrosis factor (TNF) blockade have identified dramatic clinical benefit in many children with JIA. However, as will also be discussed, overlap of pathways within a complex immune system makes clinical response unpredictable and raises additional ethical and administrative concerns.

self and foreign antigen, differentiation requires alternative strategies and is thought to depend on the microenvironment of antigen presentation governed by the lymphocyte, inflammatory proteins, or cytokines, and antigen presenting cells, such as dendritic cells and macrophages.^{11–13}

The chronic arthritides are generally considered to be T cell mediated,¹⁴ although the contribution of B cells is debated.¹⁵ T cells are activated by antigens presented in molecular grooves (class II MHC) of dendritic cells in the presence of co-stimulatory molecules on both the dendritic cell (for example, CD 80 and CD86) and on the T cell (for example, CD28). The T cell subsequently undergoes differentiation into cells that either tend to promote inflammation, TH1 response, by activating B cells, macrophages, synoviocytes, and osteoclasts, or downregulate inflammation, a TH2 response. This differentiation is determined by the cytokine milieu, including interleukins, interferon γ , and transforming growth factor β (TGF β),¹³ and by T cell maturity, the presence of T suppressor cells, dendritic lineage, and the degree of co-stimulation. In appropriate cytokine microenvironments TH1 cells may also switch to become TH2.

Juvenile idiopathic arthritis (JIA) affects 1 in 1000 children.¹ For the majority of children with polyarticular disease, methotrexate^{2–4} and other second line agents⁵ have improved the prognosis of the disease. However, a significant number of children, who do not respond adequately to conventional management, experience severe and aggressive disease, compounded by the cumulative side effects of long term medication that often includes steroids. Such disease activity results in chronic pain and stiffness, irreversible joint damage, possibly requiring joint replacement, growth retardation, and notable functional disability. There is also a significant impact on emotional and psychological development, lifestyle, and employment.^{6,7} Biologic therapy is currently targeted at this group of vulnerable patients.

AUTOIMMUNITY

Auto-reactivity is the failure of B and T cells, pivotal to the immune response, to differentiate between foreign and self antigen; autoimmune diseases are the result of the ensuing tissue damage. Current understanding acknowledges that a low level of auto-reactivity is crucial to normal immune function,⁸ including the survival of naïve T and B cells and establishment of a repertoire of mature lymphocytes following exposure to autoantigens.^{9,10} However, since there is no fundamental difference between the structure of

CYTOKINES

Cytokines are signalling molecules that orchestrate host defence, tissue remodelling, angiogenesis, and control of neoplasia. Most are low molecular weight glycoproteins or peptides and include interleukins, chemokines, interferons, some growth factors, and other independently named molecules such as TNF. They share some of the characteristics of hormones, but unique features form the basis of a sophisticated means of intercellular communication and explain why modulation of a single cytokine produces variable clinical results.

In general, baseline cytokine production is low, with just transient rises during an event. The radius of action is mostly short, but each cytokine has multiple target cells and multiple actions (pleiotropy), and different cytokines have similar or overlapping actions (redundancy). Cytokines may act as antagonists to or synergists with another, or may have a combined action altogether disparate to the individual agents. The action of cytokines is exerted via specific high affinity cell surface receptors resulting in changes in gene expression of the target cell. A cell may express more than one type of receptor to the

Abbreviations: IL, interleukin; JIA, juvenile idiopathic arthritis; RA, rheumatoid arthritis; TNF, tumour necrosis factor

See end of article for authors' affiliations

Correspondence to:
Dr N Wilkinson,
Department of
Rheumatology, Great
Ormond Street Hospital,
Great Ormond Street,
London WC1N 3JH, UK;
petherton@clara.co.uk

Accepted
5 October 2002

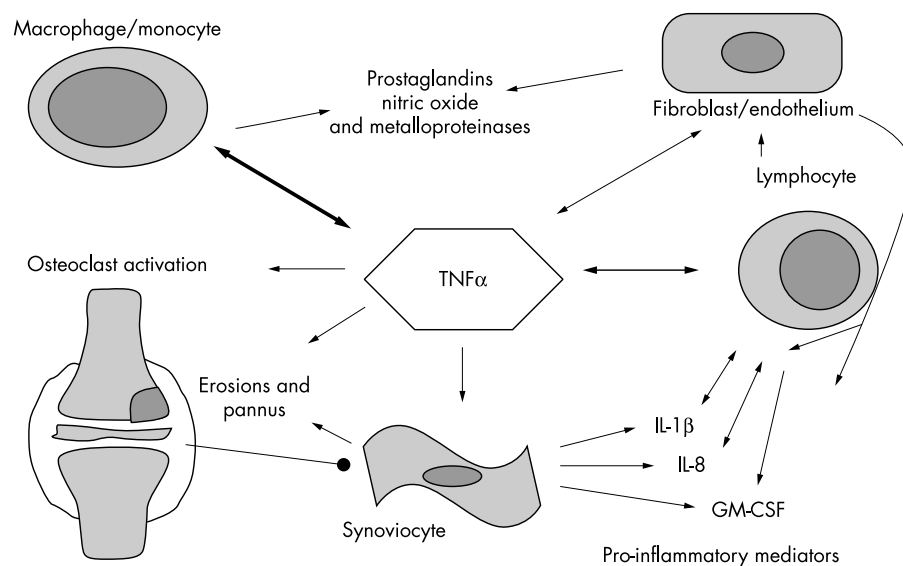


Figure 1 TNF α activity. Macrophages and monocytes are a major source of TNF α , which in turn acts on these and other cells to stimulate the production of biochemical, enzymatic, and cytokine mediators of inflammation. Further cellular activity ensues. Specifically TNF α acts on synoviocytes resulting in pannus formation and together with the activation of osteoclasts this results in articular erosions and reduced bone density.

Table 1 Comparison of etanercept and infliximab

	Etanercept	Infliximab
Licensed indications	Polyarticular JIA failing to respond to, or intolerant of, methotrexate	Not licensed
Half life	70 hours	200 hours
Dose	0.4 mg/kg (max 25 mg) twice weekly	3 mg/kg at weeks 0, 2, 6, 14, and eight weekly thereafter
Route of administration	Subcutaneous injection	Intravenous infusion
Side effects	Risk of sepsis	Risk of sepsis, tachyphylaxis
Cost of vials	25 mg vial: £75	100 mg vial: £395 + VAT
Cost per year*	£7800	£4177

*Costs based on a dose that does not exceed a single vial. An additional vial doubles the cost.

same cytokine, each with a different action, and receptors may be cleaved from the cell membrane to become “soluble” receptors binding cytokines in solution. Receptors of different cytokines share common signal transduction pathways allowing “cross over” effects.

In simple terms, cytokines influential in RA and JIA may be divided into those that are proinflammatory, such as TNF α , IL-1 β , and IL-6, and those that are anti-inflammatory, such as IL-10 and IL-1 receptor antagonist (IL-1ra). Proinflammatory cytokines are produced by numerous cell types and have actions as diverse as T cell activation, induction of acute phase proteins and inflammatory chemical pathways, stimulation of cell growth and differentiation, and control of apoptosis. This is to preserve cellular and biochemical homeostasis, but overproduction has been shown to be harmful. In other diseases proinflammatory cytokines have been associated with the development of septic shock, adult respiratory distress syndrome, heart failure, and brain injury. Conversely, IL-10 inhibits the production and action of these and other cytokines and directly inhibits proinflammatory cells such as lymphocytes and macrophages.

THERAPEUTIC CYTOKINE MODULATION

Cytokine modulation presumes an imbalance of cytokines, and evidence of this in JIA includes the positive correlation of serum and synovial cytokine concentrations with disease activity,^{16–18} an increase of antagonists or soluble receptors with a flare,¹⁹ demonstration that cytokines induce synovial macrophages and osteoclasts, and other animal²⁰ and genetic studies.²¹ In addition it appears that established therapies may exert an effect via cytokine modulation. Corticosteroids and cyclosporin A inhibit cytoplasmic nuclear factors important to

chemokine gene expression,^{22–23} whereas thalidomide enhances TNF α mRNA degradation,^{24–25} and leflunomide inhibits tyrosine phosphorylation important to signal transduction pathways.²⁶

Biologic agents have been developed to restore immune homeostasis via several strategies including direct cytokine infusion (for example, recombinant IL-10), stimulation or blockade of production (as with steroids), binding of soluble cytokines (for example, TNF α blockade), interference with receptor binding (for example, recombinant IL-1ra), and inhibition of signal transduction (as with leflunomide). Cytokine blockade has become the mainstay and this has been achieved by using monoclonal neutralising antibodies, recombinant soluble cytokine receptors, and other cytokine binding proteins called immunoadhesins.

TNF BLOCKADE

TNF α is considered to be at the fulcrum of many inflammatory pathways (fig 1) and, as such, targeting it is thought to manipulate this wide influence. However, despite considerable knowledge of TNF action, the precise nature of control exerted by blockade remains unclear. Two anti-TNF inhibitors are licensed in the UK, and are under investigation in children (table 1).

Etanercept (Enbrel, Wyeth), is a human soluble TNF α receptor, attached to human IgG. It neutralises TNF by binding with an affinity 50–1000 times that of the naturally occurring TNF receptors and may also exert its effect by binding other cytokines, including IL-1 α and TNF β . It is administered by subcutaneous injection twice weekly, for an indefinite period and may be used with or without methotrexate. It is licensed for use in children aged 4–17 years in accordance with specific

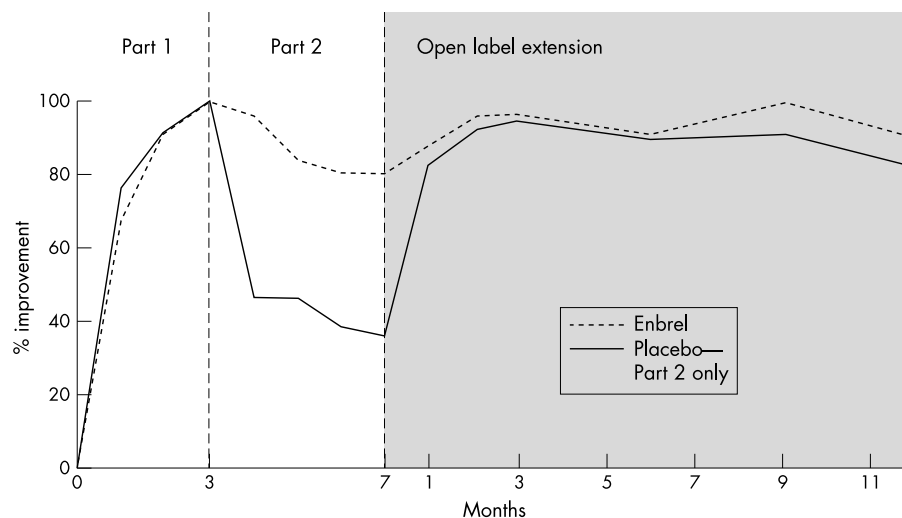


Figure 2 The three phases of the trial of etanercept in children with polyarticular JIA. In part 1 both groups received enbrel. In part 2 patients were blinded and randomised to receive enbrel or placebo. Part 3 was again open label with all patients receiving the active agent.³²

guidelines (see Practical management below); early safety and efficacy data in those under 4 years are encouraging.²⁷

Infliximab (Remicade, Schering Plough) is a chimeric human-murine monoclonal antibody that binds both soluble and cell bound TNF α . It is licensed for use in RA, but not for use in children, although the outcome of a multicentre European phase III trial of its use in polyarticular JIA may address this, together with anecdotal reports of its success in JIA.²⁸⁻³⁰ Infliximab is given by intravenous infusions, and in combination with methotrexate to avoid tachyphylaxis to the murine component. It has a longer half life than etanercept and may have a still more enduring effect by deleting TNF α producing T cells through apoptosis. This latter mechanism has been shown in Crohn's disease and may be as effective as direct cytokine neutralisation.³¹

The most detailed trial of TNF blockade in JIA to date involved etanercept. The study, of a years duration³² with five year follow up data available,³³ enrolled 69 patients with chronic polyarthritis of variable aetiology and unresponsive to maximum conventional treatment. Owing to ethical considerations a three part trial design was employed (fig 2), with all patients receiving etanercept for the first three months, to permit cessation of other medications, except low dose steroids and NSAIDs. Seventy four per cent of patients achieved a JRA30 response over these three months, this response being defined as a 30% improvement in three of six established measures.^{34 35} Randomisation occurred during stage two, to which only those who had responded to etanercept in stage one were admitted, the non-responders being withdrawn to receive alternative therapy. Eighty three per cent of those receiving placebo flared at a median of 28 days, whereas only 28% of those still receiving etanercept flared, at a median of 116 days. During the final phase patients from both arms of stage two received etanercept. Seventy four per cent of patients maintained or achieved a JRA30 response, 64% of patients improving by 50%, and 36% improving by 70%. Limitations to the interpretation of this study are apparent, but given the population (patients previously refractory to other medication), this is a remarkable response to treatment. At a median 2.3 years of subsequent treatment 67% of all patients had a 70% improvement in disease activity. Other smaller studies have found similar improvements in polyarticular JIA,³⁶ juvenile dermatomyositis, and juvenile spondyloarthritis,³⁷ and there are reports of benefit from the simultaneous use of methotrexate.³⁸ Early reports of high dose anti-TNF therapy in systemic disease are encouraging.³⁹

POTENTIAL RISKS FROM TNF BLOCKADE

Etanercept appears well tolerated by children. Although a higher incidence of headache, nausea, abdominal pain, and vomiting have been reported in children than in adults treated with etanercept for RA, this did not result in discontinuation of treatment. There are no reports of increased risk from infection, a theoretical possibility. For patients already on sulphasalazine the introduction of etanercept may increase the risk of leucopenia.⁴⁰

Randomised controlled trials of TNF blockade in approximately 900 adults with RA and clinical experience in over 100 000 adults in the USA provide data from which to make some assessment of the potential risk to children. There have been isolated case reports of aplastic anaemia, severe leucopenia, and pancytopenia, and a possible association with demyelinating diseases of the CNS.^{41 42} The theoretical increased risk of malignancy, over that of the disease itself, has not been reflected clinically,⁴³ but the duration of follow up has been insufficient to determine long term risk. The risk of infection with etanercept, including tuberculosis reactivation, does not appear to be greater than from the disease itself,^{41 43-46} but increasing numbers of reports indicate a risk of developing antibodies to antinuclear antigen and dsDNA, precipitating a lupus-like syndrome.⁴⁷⁻⁵¹

OTHER IMMUNOMODULATION

The early successes of anti-TNF therapy have not been mirrored by the use of other immunotherapy. Nor has the wider application of cytokine therapy in other medical disciplines been shown to be as successful. Recombinant colony stimulating factors may shorten periods of neutropenia following chemotherapy, but the long term effect on clinical outcome is unclear. Anti-cytokine treatment in infection, including overwhelming sepsis, has been particularly unrewarding, and the modest benefit of interferon in relapsing remitting multiple sclerosis versus the cost is debatable.

Studies in RA of supraphysiological doses of recombinant IL-1ra, a non-signalling peptide of the IL-1 family that blocks both IL-1 α and IL-1 β , have shown moderate clinical improvement⁵² with slowing of the rate of bony erosions and osteopenia.⁵³ However, the short half life requires daily treatment at high levels in order to maintain an excess of IL-1ra over IL-1 at tissue level.^{53 55} Recombinant IL-10, similarly, has a short half life and studies have shown poor clinical efficacy and that high systemic doses are not well

tolerated.⁵⁶ Such results have led to the examination of alternative approaches to IL-1ra and IL-10 immunomodulation, including local infusion and gene therapy.⁵⁷⁻⁶⁰

Alternatively early results from recombinant anti-human IL-6 receptor monoclonal antibody studies in RA are encouraging, and a phase II therapeutic trial for systemic onset JIA is in process. Indications of its benefit in systemic JIA include an association between flares and increased concentrations of IL-6 and its receptor,^{17, 61-64} associations between specific IL-6 genetic polymorphisms and disease,⁶⁴ and the promotion of proinflammatory cellular activity by IL-6.⁶⁵

Other biologic strategies have included direct cellular modulation, such as antibodies to a T cell marker CD4 to reduce a TH1 response.⁶⁶ Experimental models were encouraging,⁶⁶⁻⁶⁸ but studies in RA and psoriasis have failed to show clinical improvement.^{69, 70} Antibodies have also been targeted against CD-20 markers expressed by B cells.⁷¹ Future developments are likely to include targeting of other cytokines, TGF β , interferon γ , and GM-CSF, combination therapy, and the use of cytokines to either deviate the immune response from one cell type to another (TH1 to TH2) or to control apoptosis. It may also be possible to displace the antigenic peptide from the MHC groove by using synthetic peptides, thereby avoiding cellular activation. Research will also continue to explore genetic applications, not only in terms of gene therapy, but also the identification of genetic populations most likely to respond to treatment.^{72, 73}

ETHICAL CONSIDERATIONS

The use of anti-TNF therapy in children has begun to address important ethical considerations. Trials of a novel drug in children with severe JIA must address questions of safety and efficacy in the context of a patient group previously receiving complex long term medication. Lovell *et al*²³ stopped other disease modifying drugs to show that beneficial effects were attributable to etanercept alone. The authors were thus compelled to treat all recruits with the trial medication before randomisation, it being unethical to stop all disease modifying medication. Other concerns included the management of non-responders and interpretation of results in a chronic disease characterised by relapses and remission. This added to the complexity of trial design, an area likely to require further future innovation. Furthermore, the study only shows the value of etanercept as a rescue therapy, long term benefit having yet to be established.

Etanercept is now being used in children with severe disease, and increasingly in those unable to tolerate conventional second line agents. In view of concern about the long term safety of this new group of drugs, and also to identify long term benefit, the British Paediatric Rheumatology Group has drawn up guidelines for prescribing biologic therapies in children and young people with JIA, and has ethical approval for prospective data collection of these patient details in a central registry.⁷⁴ It is important that extensive data on its use in adults with different diseases does not detract from publication on the use of etanercept in children with JIA. The pharmacokinetics of drugs are different in children and need to be adequately assessed—JIA is a group of diseases which differ from RA and should be examined separately—and children require treatment during unique periods of physiological and psychological change.

PRACTICAL MANAGEMENT OF NEW THERAPIES

In addition to resources being available for national supervision, the success of these new drugs requires appropriate local support. The paediatric rheumatology nurse specialist is critical to the effective provision of practical and emotional support, and information for the child, family, and other staff members. Guidance on administration, blood test monitoring, management of side effects that may include injection site

reactions, and appropriate response to infection are important aspects of continuing care. Effective education for both the patient and parents ensures understanding, appropriate expectations, and adherence with the new drug following many years of “ineffective” treatment, and uncontrolled disease activity. Cooperation will depend on a balance between their belief that this time “it may work”, and excessive faith in a new wonder drug. For adolescents already competent at giving medication by injection, the addition of etanercept causes few practical problems. However, many of these patients are in the process of transition, and improved wellbeing highlights a renewed importance of addressing transitional issues of generic health education, employment issues, and achieving the normal tasks of adolescence. A balanced view of potential, but not certain, success after years of difficult management and disability should be presented in the light of largely unknown long term outcome and adverse effects that may include malignancy.

The clinical experience of etanercept in the UK, albeit anecdotal, has been positive. A total of 101 children with JIA were initially identified to be in urgent need of the drug, and funding was made available for 25 children. Current estimates now reveal that 600 children may need treatment; in order to address persistent financial limitations and variation between health authorities, a report by the National Institute for Clinical Excellence has set out criteria for eligibility and withdrawal of treatment.⁷⁵ Etanercept may be prescribed for a child or young person aged 4 to 17 years with chronic active polyarthritis who shows an inadequate response to, or is intolerant of, methotrexate. Specifically, five or more joints must have been swollen during the previous six months and three joints have limited motion and pain, tenderness, or both. Treatment is withdrawn if the child experiences an unacceptable adverse event or if the child does not respond during the initial six months of treatment or continue to respond thereafter.

Practical approaches to reduce the cost, thereby increasing availability, are also being sought. It is standard practice in the USA to use bacteriostatic water to reconstitute the drug, prolonging the shelf life and allowing multiple doses to be taken from each adult sized vial. This dramatically reduces costs. In the UK, use of bacteriostatic water is prohibited because it is potentially lethal if injected intrathecally. The Medicines Control Agency has now allowed one UK centre to reconstitute etanercept in this way, the drug being prepared by a homecare service to keep it out of the hospital pharmacy and minimise the risk of accidental intrathecal injection.

CONCLUSION

To date etanercept has been extremely beneficial for many children despite uncertainty about long term efficacy and side effects, and clinical studies of TNF antagonists raise hopes that biologic therapies will have a major impact on the long term outcome of arthritis. This is despite the failure of other biologic agents to reach their clinical potential. Refinement of the use of TNF blockade, combination therapies, and alternative biologics are now being investigated and in due course biologics may be used to treat a wider cohort of children with less severe disease. To this end vigilance and appropriate assessment of potential risks is paramount. Ultimately developments in biologic therapies may fundamentally alter the therapeutic approach to all chronic autoimmune diseases.

Authors' affiliations

N Wilkinson, Great Ormond Street Hospital, London, UK

G Jackson, Leeds General Infirmary, UK

J Gardner-Medwin, Department of Child Health, Glasgow University, UK

REFERENCES

- 1 **Gare BA**. Epidemiology. *Baillieres Clin Rheumatol* 1998;**12**:191–208.
- 2 **Giannini EH**, Brewer EJ, Kuzmina N, *et al*. Methotrexate in resistant juvenile rheumatoid arthritis: results of the USA-USSR double-blind placebo controlled trial. *N Engl J Med* 1992;**326**:1043–9.
- 3 **Giannini EH**, Newman AJ, Fink CW. Low dose methotrexate in children with juvenile rheumatoid arthritis: results of a post-trial, long-term follow-up program [abstract]. *Arthritis Rheum* 1993;**36**:S54.
- 4 **Wallace CA**. The use of methotrexate in childhood rheumatic diseases. *Arthritis Rheum* 1998;**41**:381–9.
- 5 **Wallace CA**. On beyond methotrexate: treatment of severe juvenile rheumatoid arthritis. *Clin Exp Rheum* 1999;**17**:499–504.
- 6 **Martin K**, Woo P. Outcome in JCA. *Rev Rheum* 1997;**52**:42.
- 7 **Strax TE**. Psychological issues faced by adolescents and young adults with disabilities. *Pediatr Ann* 1991;**20**:501–6.
- 8 **Dighiero G**, Rose NR. Critical self-epitopes are key to the understanding of self-tolerance and autoimmunity. *Immunol Today* 1999;**20**:423–8.
- 9 **Goldrath AW**, Bevan MJ. Selecting and maintaining a diverse T-cell repertoire. *Nature* 1999;**402**:255–62.
- 10 **Gu H**, Tarlinton D, Muller W, *et al*. Most peripheral B cells in mice are ligand selected. *J Exp Med* 1991;**173**:1357–71.
- 11 **Silverstein AM**, Rose NR. There is only one immune system! The view from immunopathology. *Semin Immunol* 2000;**12**:173–8, 257–344.
- 12 **Thomas R**, Lipsky PE. Could endogenous self-peptides presented by dendritic cells initiate rheumatoid arthritis? *Immunol Today* 1996;**17**:559–64.
- 13 **Kourilsky P**, Truffa-Bachi P. Cytokine fields and the polarisation of the immune response. *Trends Immunol* 2001;**22**:505–9.
- 14 **Panayi GS**, Corrigan VM, Pitzalis C. Pathogenesis of rheumatoid arthritis. The role of T cells and other beasts. *Rheum Dis Clin North Am* 2001;**27**:317–34.
- 15 **Edwards JC**, Cambridge G, Abrahams VM. Do self-perpetuating B lymphocytes drive human autoimmune disease? *Immunology* 1999;**97**:188–96.
- 16 **Yetgin S**, Ozen S, Saatci U, *et al*. Evaluation of tumour necrosis factor alpha, interferon gamma and granulocyte-macrophage colony stimulating factor levels in juvenile chronic arthritis. *Rheumatology* 1999;**38**:468–71.
- 17 **Rooney M**, David J, Symons J, *et al*. Inflammatory cytokine responses in juvenile chronic arthritis. *Br J Rheumatol* 1995;**34**:454–60.
- 18 **Grom AA**, Murray KJ, Luyrink L, *et al*. Patterns of expression of tumour necrosis factor alpha, tumor necrosis factor beta and their receptors in synovia of patients with juvenile rheumatoid arthritis and juvenile spondyloarthropathy. *Arthritis Rheum* 1996;**39**:1703–10.
- 19 **Rooney M**, Varsani H, Martin K, *et al*. Tumour necrosis factor alpha and its soluble receptors in juvenile chronic arthritis. *Rheumatology* 2000;**39**:432–8.
- 20 **van den Berg WB**, Joosten LA, Kollias G, *et al*. Role of tumour necrosis factor alpha in experimental arthritis: separate activity of interleukin 1 beta in chronicity and cartilage destruction. *Ann Rheum Dis* 1999;**58**(suppl 1):140–8.
- 21 **Date Y**, Seki N, Kamizono S, *et al*. Identification of a genetic risk factor for systemic juvenile rheumatoid arthritis in the 5'-flanking region of the TNF alpha gene and HLA genes. *Arthritis Rheum* 1999;**42**:2577–82.
- 22 **Auphan N**, DiDonato JA, Rosette C, *et al*. Immunosuppression by glucocorticoids: inhibition of NF-kappa B activity through induction of I kappa B synthesis. *Science* 1995;**270**:286–90.
- 23 **Almawi WY**, Beyhum HN, Rahme AA, *et al*. Regulation of cytokine and cytokine receptor expression by glucocorticoids. *J Leukoc Biol* 1996;**60**:563–72.
- 24 **Sampaio EP**, Sarno EN, Galilly R, *et al*. Thalidomide selectively inhibits tumor necrosis factor alpha production by stimulating human monocytes. *J Exp Med* 1991;**173**:699–703.
- 25 **Corral LG**, Muller GW, Moreira AL, *et al*. Selection of novel analogs of thalidomide with enhanced tumor necrosis factor alpha inhibitory activity. *Mol Med* 1996;**2**:506–15.
- 26 **Xu X**, Williams JW, Bremer EG, *et al*. Inhibition of protein tyrosine phosphorylation in T cells by a novel immunosuppressive agent, leflunomide. *J Biol Chem* 1995;**270**:12398–403.
- 27 **Rothman D**, Smith K, Kimura Y. Safety and efficacy of etanercept (enbrel) in children with JRA less than 4 years of age [abstract 1435]. *Arthritis Rheum* 2001;**44**:S293.
- 28 **Vinje E**, Obiora O, Forre. Juvenile chronic polyarthritis treated with infliximab [abstract 745]. *Ann Rheum Dis* 2000;**59**.
- 29 **Billiau AD**, Wouters C. Improved articular and systemic disease in a boy treated with anti-TNFa monoclonal antibody (Remicade) for refractory JIA [abstract 744]. *Ann Rheum Dis* 2000;**59**.
- 30 **Gerloni V**, Pontikaki I, Desiati F, *et al*. Infliximab in the treatment of persistently active refractory juvenile idiopathic arthritis. *Ann Rheum Dis* 2000;**59**:740.
- 31 **ten Hove T**, van Monfrans C, Peppelenbosch MP, *et al*. Infliximab treatment induces apoptosis of lamina propria T lymphocytes in Crohn's disease. *Gut* 2002;**50**:206–11.
- 32 **Lovell DJ**, Giannini EH, Reiff A, *et al*, for the Paediatric Rheumatology Collaborative Study Group. Etanercept in children with polyarticular juvenile rheumatoid arthritis. *N Engl J Med* 2000;**342**:763–9.
- 33 **Lovell DJ**, Giannini EH, Passo M, *et al*. Long-term efficacy of etanercept (ENBREL) in children with polyarticular-course juvenile rheumatoid arthritis [poster]. PRES, 2001.
- 34 **Giannini EH**, Lovell DJ, Felson DT, *et al*. Preliminary core set of outcome variables for use in juvenile rheumatoid arthritis clinical trials. *Arthritis Rheum* 1994;**37**:S428.
- 35 **Giannini EH**, Ruperto N, Ravelli A, *et al*. Preliminary definition of improvement in juvenile arthritis. *Arthritis Rheum* 1997;**40**:1202–9.
- 36 **Kietz DA**, Pepmueller PH, Moore TL. Clinical response to etanercept in polyarticular course juvenile rheumatoid arthritis. *J Rheumatol* 2001;**28**:360–2.
- 37 **Reiff A**, Henrickson M. Prolonged efficacy of etanercept in refractory juvenile ankylosing spondylitis [abstract 1434]. *Arthritis Rheum* 2001;**44**:S292.
- 38 **Brunner HI**, Tomasi AL, Sherrard TM, *et al*. Effectiveness and safety of etanercept for the treatment of juvenile rheumatoid arthritis (JRA) in clinical practice [abstract 1436]. *Arthritis Rheum* 2001;**44**:S292.
- 39 **Kimura Y**, Imundo LF, Li SC. High dose infliximab in the treatment of resistant systemic juvenile rheumatoid arthritis [abstract 1316]. *Arthritis Rheum* 2001;**44**:S272.
- 40 **Striegel KH**, Onel KB, Lehman TJA. Leukopenia in children receiving sulfasalazine and etanercept in combination [abstract 1437]. *Arthritis Rheum* 2001;**44**:S292.
- 41 **Cush JJ**, Spiera R. Etanercept update on recent "dear doctor" safety letter. ACR Hotline, 5 Dec 2000.
- 42 **Brandt J**, Haibel H, Reddig J, *et al*. Anti-TNF alpha treatment of patients with severe ankylosing spondylitis—a one year follow-up [abstract 208]. *Arthritis Rheum* 2000;**43**:S101.
- 43 **Klareskog L**, Moreland LM, Cohen SB, *et al*. Global safety and efficacy of up to five years of etanercept (Enbrel) therapy [abstract 150]. *Arthritis Rheum* 2001;**44**:S77.
- 44 **Wallis WJ**, Burge DJ, Sabath D, *et al*. Tuberculosis reports with Etanercept (Enbrel) therapy [abstract 153]. *Arthritis Rheum* 2001;**44**:S78.
- 45 **Wallis WJ**, Burge DJ, Holman J, *et al*. Infection reports with etanercept (Enbrel) therapy [abstract 154]. *Arthritis Rheum* 2001;**44**:S78.
- 46 **Belostocki KB**, Leibowitz E, Tai K, *et al*. Infections associated with etanercept treatment of rheumatoid arthritis: 2 years of experience in the "real-world" [abstract 725]. *Arthritis Rheum* 2001;**44**:S725.
- 47 **Bandt M de**, Descamps V, Meyer O. Two cases of etanercept-induced-lupus-like syndrome in RA patients [abstract 1919]. *Arthritis Rheum* 2001;**44**:S372.
- 48 **Jones RE**, Moreland LW. Tumor necrosis factor inhibitors for rheumatoid arthritis. *Bull Dis Rheum* 1999;**48**:1–3.
- 49 **Markham A**, Lamb HM. Infliximab. A review of its use in the management of rheumatoid arthritis. *Drugs* 2000;**59**:1341–59.
- 50 **Hanauer SB**. Review article: safety of infliximab in clinical trials. *Aliment Pharmacol Ther* 1999;**13**:16–22.
- 51 **Shakoor N**, Michalska M, Harris CA, *et al*. Drug-induced systemic lupus erythematosus associated with etanercept therapy. *Lancet* 2002;**359**:579–80.
- 52 **Bresnahan B**, Alvaro-Gracia JM, Cobby M, *et al*. Treatment of rheumatoid arthritis with recombinant human interleukin-1 receptor antagonist. *Arthritis Rheum* 1998;**41**:2196–204.
- 53 **Jiang Y**, McCabe D, Aitchison R, *et al*. Relationship of Genant scoring method with Larsen scoring method in randomized, double-blind, placebo controlled trial of recombinant human interleukin-1 receptor antagonist in patients with rheumatoid arthritis. *Arthritis Rheum* 1998;**41**:S50.
- 54 **Campion GV**, Lebsack ME, Lookabaugh J, *et al*. IL-1Ra Arthritis Study Group. Dose-range and dose-frequency study of recombinant human interleukin-1 receptor antagonist in patients with rheumatoid arthritis. *Arthritis Rheum* 1996;**39**:1092–101.
- 55 **Dinarelli CA**, Thompson RC. Blocking IL-1: interleukin 1 receptor antagonist in vivo and in vitro. *Immunol Today* 1991;**12**:404–10.
- 56 **van Roon JA**, Lafeber FP, Bijlsma JW. Synergistic activity of interleukin-4 and interleukin-10 in suppression of inflammation and joint destruction in rheumatoid arthritis. *Arthritis Rheum* 2001;**44**:3–12.
- 57 **Ghivizzani SC**, Kang R, Muzzonigro T, *et al*. Gene therapy for arthritis—treatment of the first three patients. *Arthritis Rheum* 1997;**40**:S223.
- 58 **Fellowes R**, Etheridge CJ, Coade S, *et al*. Amelioration of established collagen induced arthritis by systemic IL-10 gene delivery. *Gene Therapy* 2000;**7**:967–77.
- 59 **Lechman ER**, Jaffurs D, Ghivizzani SC, *et al*. Direct adenoviral gene transfer of viral IL-10 to rabbit knees with experimental arthritis ameliorate disease in both injected and contralateral control knees. *J Immunol* 1999;**163**:2202–8.
- 60 **Minter RM**, Ferry MA, Munday ME, *et al*. Adenoviral delivery of human and viral IL-10 in murine sepsis. *J Immunol* 2001;**167**:1053–9.
- 61 **De Benedetti F**, Massa M, Robbioni P, *et al*. Correlation of serum interleukin-6 levels with joint involvement and thrombocytosis in systemic juvenile rheumatoid arthritis. *Arthritis Rheum* 1991;**34**:1158–63.
- 62 **Keul R**, Heinrich PC, Muller-Newen G, *et al*. A possible role for soluble IL-6 receptor in the pathogenesis of systemic onset juvenile chronic arthritis. *Cytokine* 1998;**10**:729–34.
- 63 **De Benedetti F**, Massa M, Pignatti P, *et al*. Serum soluble interleukin-6 (IL-6) receptor and IL-6/soluble IL-6 receptor complex in systemic juvenile rheumatoid arthritis. *J Clin Invest* 1994;**93**:2114–19.
- 64 **Fishman D**, Faulds G, Jeffery R, *et al*. The effect of novel polymorphisms in the interleukin-6 (IL-6) gene on IL-6 transcription and plasma IL-6 levels and an association with systemic onset juvenile chronic arthritis. *J Clin Invest* 1998;**102**:1369–76.
- 65 **Hirano T**, Akira S, Taga T, *et al*. Biological and clinical aspects of interleukin-6. *Immunol Today* 1990;**11**:443–9.
- 66 **Breedveld FC**. Monoclonal antibodies to CD4. *Rheum Dis Clin North Am* 1998;**24**:567–78.

- 67 **Marinova-Mutafchieva L**, Williams RO, Mauri C, *et al*. A comparative study into the mechanisms of action of anti-tumor necrosis factor alpha, anti-CD4, and combined anti-tumor necrosis factor alpha/anti-CD4 treatment in early collagen-induced arthritis. *Arthritis Rheum* 2000;**43**:638–44.
- 68 **Yocum DE**, Solinger AM, Tesser J, *et al*. Clinical and immunologic effects of a PRIMATIZED anti-CD4 monoclonal antibody in active rheumatoid arthritis: results of a phase I, single dose, dose escalating trial. *J Rheumatol* 1998;**25**:1257–62.
- 69 **Wendling D**, Racadot E, Wijdenes J, *et al*. A randomized, double blind, placebo controlled multicenter trial of murine anti-CD4 monoclonal antibody therapy in rheumatoid arthritis. *J Rheumatol* 1998;**25**:1457–61.
- 70 **Isaacs JD**, Burrows N, Wing M, *et al*. Humanized anti-CD4 monoclonal antibody therapy of autoimmune and inflammatory disease. *Clin Exp Immunol* 1997;**110**:158–66.
- 71 **Protheroe A**, Edwards JC, Simmons A, *et al*. Remission of inflammatory arthropathy in association with anti-CD20 therapy for non-Hodgkin's lymphoma. *Rheumatology* 1999;**38**:1150–2.
- 72 **Chernajovsky Y**, Dreja H, Daly G, *et al*. Immuno- and genetic therapy in autoimmune diseases. *Genes & Immunity* 2000;**1**:295–307.
- 73 **Buchs N**, di Giovine FS, Silvestri T, *et al*. IL-1B and IL-1Ra gene polymorphisms and disease severity in rheumatoid arthritis: interaction with their plasma levels. *Genes & Immunity* 2001;**2**:222–8.
- 74 **British Paediatric Rheumatology Group**. *Guideline for the prescribing of biologic agents for children and young adults with juvenile idiopathic arthritis*. British Paediatric Rheumatology Group, April 2000.
- 75 **NICE**. *Guidance on the use of etanercept for the treatment of juvenile idiopathic arthritis*. National Institute for Clinical Excellence, Technology Appraisal Guidance No. 35, March 2002.

IMAGES IN PAEDIATRICS.....

Disseminated congenital neuroblastoma presenting at birth

A full term female infant, born following a pregnancy complicated by maternal hypertension and decreased fetal movements, presented within four hours of birth with respiratory distress, hepatomegaly, and disseminated intravascular coagulopathy. Abdominal magnetic resonance imaging (MRI) scan revealed a large heterogeneous mass (arrow in fig 1) located in the right adrenal gland compressing the kidney

and multiple discrete hepatic lesions, suggestive of congenital neuroblastoma. Her condition deteriorated rapidly and she died on day 4 of life from multiorgan failure.

Postmortem examination confirmed the diagnosis of disseminated neuroblastoma. Nests of characteristic neuroblastoma cells are shown in the adrenal section and in the skull bone (insert, fig 2). Tumour deposits were also identified in the liver, pancreas, and perigastric lymph

nodes. The maternal hypertension, fetal compromise, and rapid postnatal presentation suggest extensive in utero tumour growth and dissemination.

G C Millman, A K Lodha, A M Moore

Division of Neonatology, The Hospital for Sick Children and University of Toronto, 555 University Avenue, Toronto M5G 1X8, Canada; GCMillman@aol.com

E Cutz

Division of Pathology, The Hospital for Sick Children and University of Toronto



Figure 1 Abdominal MRI scan showing a large heterogeneous mass (arrow).

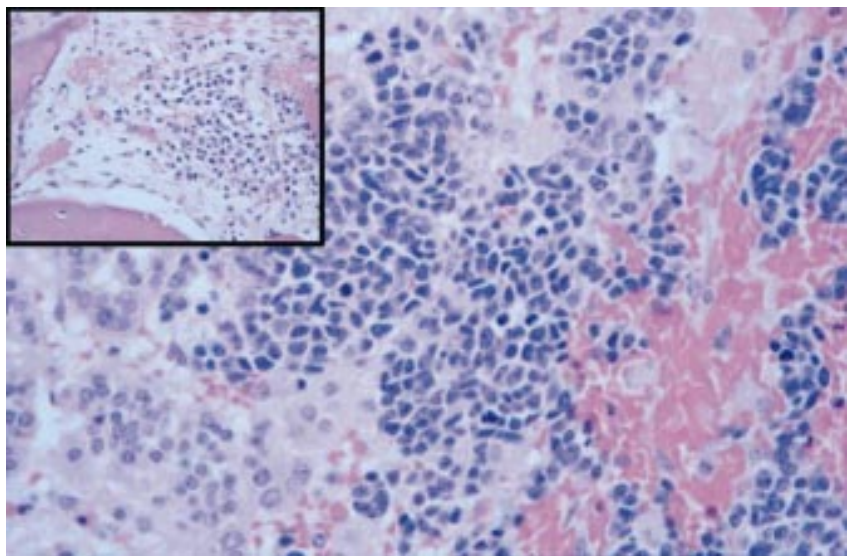


Figure 2 Section through adrenal gland and skull bone (insert).