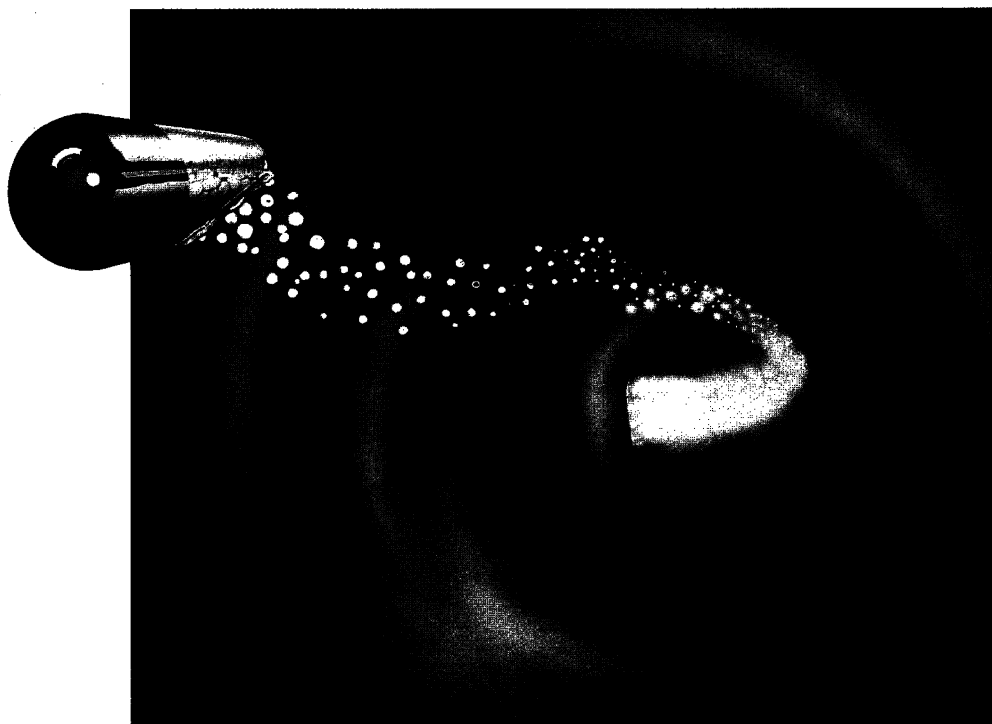


PROGRESS

In The Management Of Cystic Fibrosis



creon[®] 
pancreatin

RIGHT ON TARGET – RIGHT FROM THE START

Prescribing Information – Presentation: Brown-yellow capsules containing enteric coated granules of pancreatin equivalent to: 9,000 BP units of amylase, 8,000 BP units of lipase, 210 BP units of protease. Available in packs of 100. Basic NHS price £13.33. **Indication:** Pancreatic exocrine insufficiency. **Dosage and administration:** Adults and children: Initially one or two capsules with meals, then adjust according to response. The capsules can be swallowed whole, or for ease of administration they may be opened and the granules taken with fluid or soft food, but without chewing. If the granules are mixed with food, it is important that they are taken immediately, otherwise dissolution of the enteric coating may result.

Contra-indications, Warnings, etc: Contra-indications: Substitution with pancreatic enzymes is contra-indicated in the early stages of acute pancreatitis. **Warnings:** Use in pregnancy: There is inadequate evidence of safety in use during pregnancy. The product is of porcine origin. Rarely cases of hyper-uricosuria and hyper-uricaemia have been reported with high doses of pancreatin. Overdosage could precipitate meconium ileus equivalent. Perianal irritation could occur, and, rarely, inflammation when large doses are used. **Product Licence Number:** 5727/0001. **Name and address of Licence Holder:** Kali Chemie Pharma GmbH, Postfach 220, D-3000, Hannover 1, West Germany.

duphar

Further information is available from:
Duphar Laboratories Limited, Gaters Hill, West End, Southampton SO3 3JD. Tel: 0703 472281.

CRA/PEI/1/89



Making sure Ventolin gets through to the younger generation



VENTODISKS

(Salbutamol BP)



Ventodisks (Salbutamol BP) Abridged Prescribing Information: (Please refer to full data sheet before prescribing.) **Uses:** Treatment and prophylaxis of acute and chronic bronchospasm. **Dosage and administration:** *Adults:* 400 micrograms, as a single dose or three to four times daily. *Children:* 200 micrograms, up to four times daily. **Contraindications:** Threatened abortion during first or second trimester. Hypersensitivity. **Precautions:** If previously effective dose lasts less than three hours, seek medical advice. Caution in patients with thyrotoxicosis. Avoid use with non-selective beta-blockers. **Pregnancy:** Avoid unnecessary use during early pregnancy. Only consider if expected benefit outweighs possible risks. **Lactation:** Salbutamol likely to be secreted in

breast milk. Effect on neonate unknown. Balance risks against benefits. **Side effects:** Mild tremor, headache occur rarely. Very rarely – transient muscle cramps and hypersensitivity reactions. Paradoxical bronchospasm could occur – substitute alternative therapy. **Presentation and Basic NHS cost:** Pack of 14 Ventodisks each containing 8 x 200 micrograms Salbutamol BP (as sulphate) – light blue or 8 x 400 micrograms Salbutamol BP (as sulphate) dark blue, together with a Ventolin Diskhaler. For inhalation – £7.11 and £12.02. Refill pack of 14 x 8 Ventodisks only, 200 micrograms – £6.54; 400 micrograms £11.45. **Product licence numbers:** Ventodisks 200 micrograms 0045/0134, Ventodisks 400 micrograms 0045/0135.



ALLEN & HANBURY'S

Further information is available on request from: Allen & Hanburys Limited, Uxbridge, Middlesex UB11 1BT
Ventodisks should only be used with a Ventolin Diskhaler. Diskhaler, Ventodisks and Ventolin are trade marks

RSV POSITIVE?

USE VIRAZID[®] EARLY

Ribavirin



YOU CAN TREAT THE INFECTION NOT JUST THE SYMPTOMS

Prescribing Information ▼

Indications

Virazid is indicated in the treatment of infants and children with severe respiratory syncytial virus bronchiolitis.

Dosage

Treatment is carried out using a small particle aerosol generator (SPAG) for 12-18 hours per day for at least 3 and no more than 7 days. The concentration of ribavirin in the reservoir is 20mg/ml in the SPAG unit and the average concentration for a 7 hour period is 0.19mg/l of air.

Presentation

Virazid is a sterile lyophilised powder of ribavirin to be reconstituted for aerosol administration. Each 100ml glass vial contains 6g of ribavirin and, when reconstituted to the correct volume of 300ml with Water for Injections BP, will

contain 20mg/ml ribavirin at a pH of approximately 5.5.

Contra-Indications

Ribavirin is contra-indicated in females who are or may become pregnant and it should be noted that ribavirin can be detected in human blood even four weeks after oral administration has ceased.

Precautions

In infants requiring assisted ventilation, Virazid should only be used when there is constant monitoring of both patients and equipment.

Side Effects

Several serious adverse events occurred in severely ill infants with life-threatening underlying disease many of whom required

assisted ventilation. These events included worsening of respiratory status, bacterial pneumonia and pneumothorax. The role of ribavirin aerosol in these events has not been determined.

Anaemia has been reported with oral and intravenous administration but no such incidents have been reported with aerosol administration. Reticulocytosis has been reported with aerosol use.

Warnings

Precipitation of the drug in respiratory equipment and consequent accumulation of fluid in the tubing has caused difficulties for patients requiring assisted ventilation.

In infants requiring assisted ventilation Virazid should only be used when there is constant monitoring of both patients and equipment.

Directions for use during assisted ventilation are given in the SPAG manual which should be read carefully before such administration.

Full prescribing information is available upon request.

▼ Special reporting to the CSM required.

Basic NHS Price: 1 x 6g vial £195.

Product Licence Number : 4657/0004

Product Licence Holder : Viratek Inc. USA

Supplied By : Britannia Pharmaceuticals Ltd
Forum House
41-51 Brighton Road
Redhill, Surrey,
RH1 6YS

Specially for kids



Fortison® Paediatric has been specifically formulated for young children requiring a nasogastric tube feed. It is a balanced, sterile feed, based on the 1988 BDA Paediatric and PEN Group Joint Working Party guidelines.¹

Furthermore, Fortison® Paediatric is ready-to-use

and has the advantages of saving time, and reducing inaccuracy of nutrient levels and contamination risks, compared with modified adult formulas.

To help patients and ward staff with feeding time, Cow & Gate will be providing a range of MR MEN educational and fun items.

Fortison®
paediatric

*ready-to-use
nasogastric feed*

1. Paediatric Enteral Feeding Solutions and Systems. A Report by the Joint Working Party of the Paediatric Group and the Parenteral and Enteral Nutrition Group of the British Dietetic Association, 1988.

Cow & Gate CLINICAL CARE

Leaders in scientific nutrition Cow & Gate House, Trowbridge, Wiltshire BA14 8YX. Tel: 0225 768381

Fortison is a trademark

CC421/5/90

NUTRIZYM® GR

GASTRO-RESISTANT PANCREATIN THERAPY IN PANCREATIC INSUFFICIENCY



EFFICIENT DELIVERY FOR MAXIMUM ENZYME AVAILABILITY IN THE DUODENUM.

*"The size of microspheres of pancreatin should be such that they empty at least as fast as the food they are intended to digest."*²

Gelatin capsule containing enteric coated acid resistant microspheres of Lipase, Amylase and Protease.

Capsule dissolves in gastric fluids; microspheres remain intact and disperse throughout chyme.

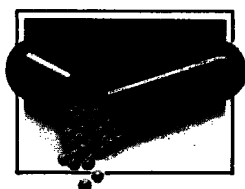
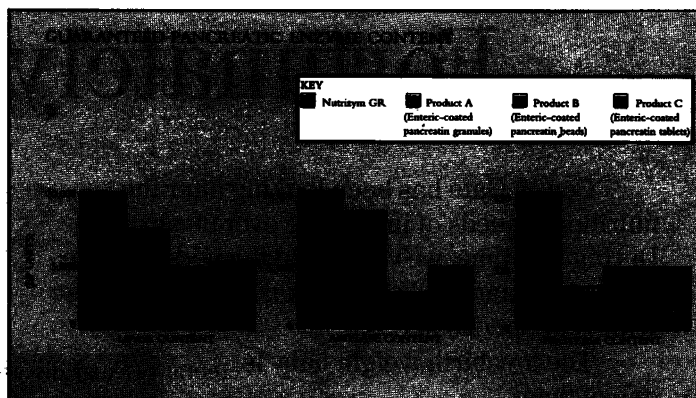
Enteric coating of microspheres starts to dissolve in duodenum at pH of about 5, releasing enzymes for digestion of food.

*"Recent reports on both Cystic Fibrosis and Adult Chronic Pancreatitis have demonstrated that duodenal postprandial pH . . . is frequently less than pH 5.5 . . ."*³

● THE PANCREATIN MICROSPHERE PREPARATION WITH THE HIGHEST GUARANTEED POTENCY.¹

● FEWER CAPSULES NEEDED

At equal doses of lipase Nutrizym GR has been shown to result in equivalent lipid digestion and absorption with less than half as many capsules as required by preparation B⁴ (see bar chart for enzyme concentrations).



Nutrizym GR

Gastro-resistant pancreatin

Its strong point is
its strength

REFERENCES 1) Pancreatin section, BNF.

2) Meyer JH et al, *Gastroenterology*, 1988, Vol. 94, No. 6, 1315-25.

3) Littlewood JM, Kelleher J, Walters MP & Johnson AW, *J Paediatr. Gastroenterol. Nutr.*, 1988, Vol. 7, Suppl. 1, 522-529.

4) Dodge JA & Matthews EE (Data on file).

Further information is available on request from E. Merck Pharmaceuticals (a division of Merck Ltd) FREEPOST, Winchester Road, Four Marks, Alton Hants GU34 5HB. Telephone (0420) 64011.

NUTRIZYM GR - Prescribing Information

Each capsule contains enteric coated pellets of Pancreatin BP 300 mg with not less than the following activities:
Lipase 10,000 BPU, Protease 650 BPU, Amylase 10,000 BPU
Use: Fibrocystic disease of the pancreas, chronic pancreatitis, steatorrhoea and other pancreatic deficiency states.

Dosage and Administration: Usually 1 - 2 capsules with meals.
Capsules should be swallowed whole with water or contents sprinkled on food.
Pellets should not be chewed.

Contra-indications: Known hypersensitivity to porcine pancreatin.

Precautions: Hyperuricaemia and hyperuricosuria have been reported to occur in

cystic fibrosis patients; pancreatin extracts contain a very small amount of purine which might, in high dose, contribute to this condition.

Use in Pregnancy: Safety in pregnancy has not been established.

Side effects: Very rarely hypersensitivity reactions. High doses may cause buccal and perianal irritation, in rare cases amounting to inflammation.

Pharmaceutical Precautions

Store below 25°C in tightly closed containers.

Package quantities

Containers of 100 capsules (OP) PL 0493/0121;
NHS Price: £12.52 at February 1990

MERCK

Some infants are ahead of their time.

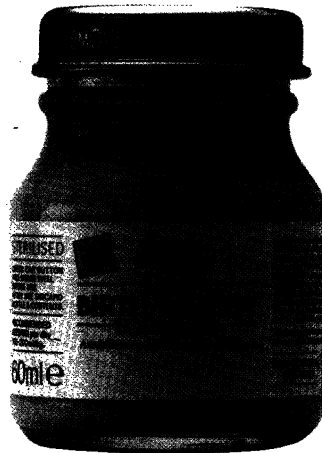


Fortunately, so are we.

Cow & Gate has been looking after the nutritional needs of infants for over 90 years. During that time, we've created the widest range of formulas and foods for normal infants and those with very special needs.

The low birth weight baby is one of them.

Our Low Birth Weight Formula was specially created to provide higher energy and nutrient levels, at a lower volume than might otherwise be obtained from breast-milk or standard infant formula – an important consideration in the prevention of problems associated with immature digestive systems.



This formulation was one of the first designed to meet the guidelines set out by ESPGAN, the European Society of Paediatric Gastroenterology and Nutrition.

What's more, Cow & Gate Low Birth Weight Formula achieves good calcium retention and still offers the lowest osmolality of any low birth weight formula available today.

Cow & Gate Low Birth Weight Formula. Well-absorbed. Proven well-tolerated.

And just one of an ever increasing range of infant formulas and foods from a specialist ahead of its time.

Extra nourishment when it's needed most

**Cow
& Gate**

Convenient 60ml size
means less waste

Medical Databases from Oxford

London Dysmorphology Database & London Neurogenetics Database

Developed by **Dr ROBIN WINTER** and **Dr MICHAEL BARAITSER**

These well known databases are now available from Oxford University Press with new and flexible retrieval software. Offering:

- powerful and comprehensive search facilities
- full abstracts for each syndrome
- regular updates

In both cases, a clear menu system facilitates easy and efficient retrieval of information. Users may search through syndromes, features, references, or patient data to select just the information they require. Updates will be published annually and made available to users on a subscription basis.

London Dysmorphology Database

'... an excellent source of references and differential diagnoses.'

DR J. G. HALL, University of British Columbia, Canada

LDDB is an invaluable tool for clinical geneticists, paediatricians, pathologists, and anyone involved in the diagnosis of multiple malformations. Offering:

- easy access to 2,000 malformation syndromes
- 9,000 references from literature

London Neurogenetics Database

Running under the same flexible software as LDDB, the *London Neurogenetics Database* is designed for use in the clinical diagnosis of syndromes with neurological signs and symptoms. Offering

- information on 1,800 syndromes involving the nervous system
- 8,000 references from literature

This is an essential reference source for paediatric and adult neurologists, clinical geneticists, and other professionals who need to diagnose patients with multiple clinical features, or to check information on those already diagnosed.

PRICE INFORMATION

Price: £395 (UK customers add VAT at 15%), plus postage and packing for overseas customers.

Updates: £150 (annual subscription)

Hardware requirements:

● IBM XT, AT, or PS/2 (and full compatibles) with minimum 640K RAM and DOS version 2.1 or higher. LNDB requires between 8.5Mb & 10Mb free disk space, and LDDB requires 10Mb free disk space (excluding the disk space required for any files created during a session).

● Output can be directed to a file or to any standard ASCII printer

N.B. LDDB & LNDB are complete and do not require the use of a separate database package.

For further information, return the coupon below to

Janet Caldwell,
Customer Service Manager,
Electronic Publishing,
Oxford University Press
Walton Street,
Oxford, OX2 6DP.
Tel: 0865 56767 ext 4949
Overseas: +44 865 56767
Fax: 0865 56646

Please send me further information on the London Dysmorphology Database and/or the London Neurogenetics Database
(delete as appropriate)

Name _____

Institute _____ Telephone _____

Address _____

ADC/APG3

OXFORD UNIVERSITY PRESS

NATIONAL UNIVERSITY OF SINGAPORE
DEPARTMENT OF PAEDIATRICS



Applications are invited for teaching appointments in the Department of Paediatrics.

Candidates should be competent general paediatricians with a subspecialty interest in Neonatology and possess an approved basic medical degree with relevant higher professional qualifications. Preference will be given to those with proven research capability.

Besides regular appointments on initial 3-year contracts with the possibility of tenure later, visiting (short-term) appointments for one to three years will also be considered.

Gross annual emoluments range as follows:

Lecturer	S\$53,160– 64,200
Senior Lecturer	S\$58,680– 100,310
(STGE1-00=S\$3-37 approximately)	

The commencing salary will depend on the candidate's qualifications, experience and the level of appointment offered. In addition, appointees who are on regular appointments will receive a Specialist Allowance (SA) under the Professional Fee Scheme, the amount depending on their level of appointment and salary as follows:

Lecturer	15% or 20% of gross salary
Senior Lecturer	25% or 40% of gross salary

Senior Lecturers who are designated Consultants may retain in full professional fees earned during the clinical sessions devoted to private patients which are over and above their SA up to twice their gross annual salary. For additional fees earned thereafter, part of the fees to be retained by the staff member will depend on his contribution to teaching, research and service. Lecturers and Senior Lecturers designated as Senior Registrars may retain professional fees earned over and above their SA, up to 60% of their gross annual salary. The number of sessions for private patients will be limited to 4 out of 11 sessions in a week.

Staff on visiting appointments will be provided with emoluments comparable to those offered to staff on regular contracts.

Leave and medical benefits will be provided. Depending on the type of contract offered, other benefits may include: provident fund benefits or an end-of-contract gratuity, a settling-in allowance of S\$1000 or S\$2000, subsidised housing at nominal rentals ranging from S\$100 to S\$216 p.m., education allowance for up to three children subject to a maximum of S\$10,000 per annum per child, passage assistance and baggage allowance for the transportation of personal effects to Singapore.

Application forms and further information on terms and conditions of service, including the Professional Fee Scheme, may be obtained from:

The Director Personnel Department National University of Singapore 10 Kent Ridge Crescent Singapore 0511	NUS Overseas Office Singapore High Commission (Students Department) 16 Kinnerton Street London SW1X 8ES, U.K. Tel: (071) 235-4562
--	--

Enquiries may also be sent through BITNET to:
PERLT @ NU53090, or through Telefax: (65) 7783948

SPECIAL BMA MEMBERS EDITION

MIRROR OF MEDICINE

A HISTORY OF THE BMJ

P. W. J. BARTRIP



BMJ

1840-1990

The *BMJ's* 150 year history has taken it from small beginnings in Worcester as the *Provincial Medical and Surgical Journal* to its current position as a major international medical journal. On the way there have been rows, editors' dismissals, and battles with the BMA and royal colleges as well as growing success and authority. In *Mirror of Medicine* the historian P W J Bartrip provides a shrewd and perceptive commentary on the *BMJ's* progress, placing its history in the context of contemporary events and examining its treatment of many key themes in medical science and society.

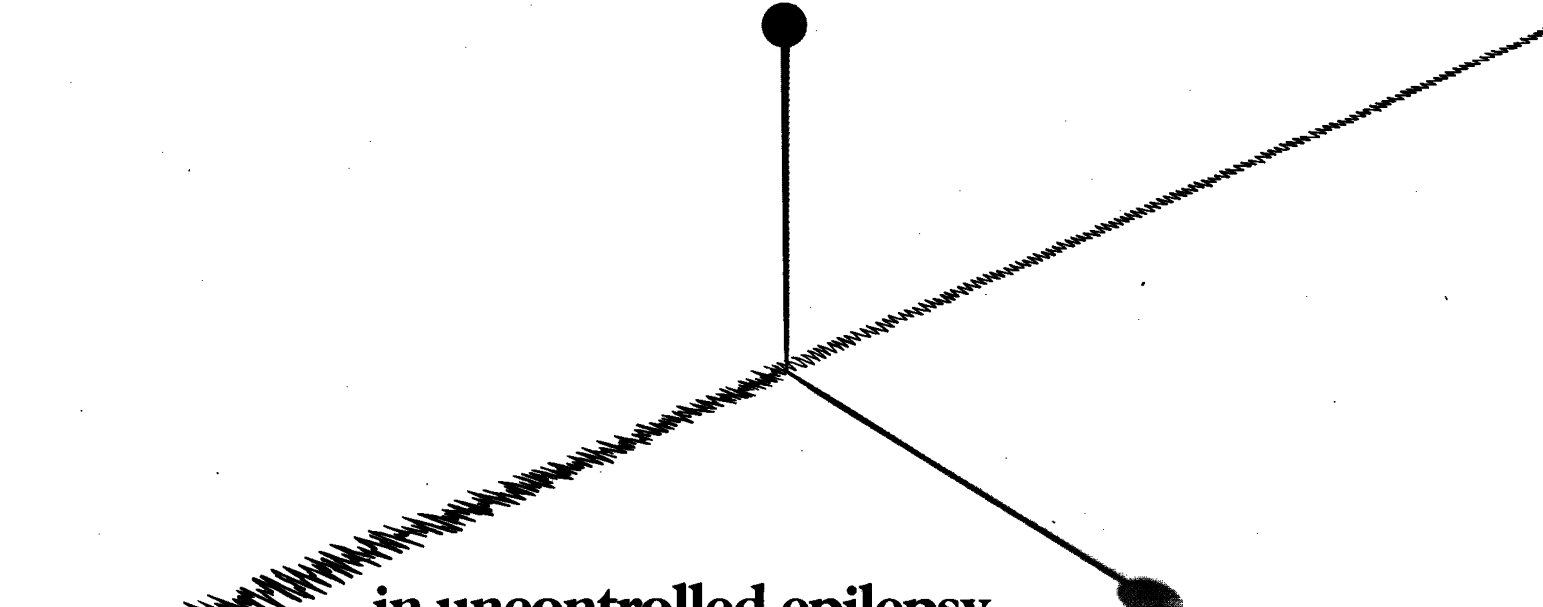
352 pp., illus., Clarendon Press/BMJ,
September 1990



Price to BMA members only: UK £29; Abroad £33. Prices include packing and postage, by air speeded despatch abroad (air mail rates on application). AMEX, Access, Visa credit cards accepted.

Return address for orders: British Medical Journal, PO Box 295, London WC1H 9TE. (Also available in the BMJ/BMA bookshop in BMA House.)

A breakthrough in seizure control...



**..in uncontrolled epilepsy
a >50% reduction in seizure
frequency in approximately
50% of patients⁽¹⁾**

- No therapeutically significant drug interactions with other anti-convulsants^{(2-5)*}
- Flexible dosing - once or twice daily



SABRIL
VIGABATRIN

Specific GABA-transaminase inhibition
for uncontrolled epilepsy



*Decreases of about 20% in plasma phenytoin levels have been reported but these are unlikely to be of therapeutic significance.

Merrell Dow Pharmaceuticals Limited, Lakeside House, Stockley Park, Uxbridge, Middlesex UB11 1BE
TRADEMARKS Sabril, Merrell Dow.

**MERRELL
DOW**

Abridged Prescribing Information and references appear on the following page.

SAB 5 90

Abridged Prescribing Information SABRIL Tablets ▼

Presentation: White tablets with a breakline marked SABRIL, each containing 500mg vigabatrin.

Uses:

Indications: Treatment of epilepsy not controlled by other antiepileptic drugs.

Dosage and Administration: Oral administration once or twice daily added to the patient's current therapeutic regimen.

Adults: Recommended starting dose 2g/day. Increased or decreased in 0.5g or 1.0g increments depending upon clinical response and tolerability. Maximum 4g/day. There is no direct correlation between plasma concentration and efficacy.

Children: Recommended starting dose 1g/day in ages 3-9 years and 2g/day if older.

Elderly: Consider dose reduction in patients with impaired renal function.

Contra-indications, Precautions, Warnings etc.:

Use in pregnancy and lactation: Contra-indicated.

Precautions: Abrupt withdrawal may lead to rebound seizures. Caution in patients with history of psychosis or behavioural problems. Caution in elderly patients, particularly creatinine clearance below 60ml/min. Reduce dose and monitor closely for adverse events.

Warnings: Vigabatrin causes intramyelinic oedema in the brain white matter tracts of animals but there is no evidence of this in man. However, monitor patients for neurological changes. See the full product data sheet.

Effects on driving ability: Drowsiness has been seen and patients should be warned.

Side-effects: Are mainly CNS related. Aggression and psychosis have been reported and a previous history of psychosis or a behavioural problem appears to be a predisposing factor. Other reported events: drowsiness and fatigue, dizziness, nervousness, irritability, depression, headache and less commonly confusion, memory disturbance and vision complaints; also weight gain and minor gastrointestinal side-effects. Also in children excitation and agitation. Some patients may experience an increase in seizure frequency with vigabatrin, particularly those with myoclonic seizures. Tests have not revealed evidence of neurotoxicity in humans. Lab data do not indicate renal or hepatic toxicity. Decreases in SGOT and SGPT have been observed. Chronic treatment may lead to a slight decrease in haemoglobin.

Drug Interactions: are unlikely. A gradual reduction of about 20% in plasma phenytoin concentration has been observed. No clinically significant interactions with carbamazepine, phenobarbitone or sodium valproate.

Legal Category: POM

Package Quantities: Blister strips of 10 in cartons of 100.

Product Licence Number: PL 4425/0098.

NHS Price: Pack of 100 tablets: £46.

Date of Preparation: December 1990

You must refer to the full prescribing information before administering Sabril. Further information including full product data sheet is available from the Licence Holder:

Merrell Dow Pharmaceuticals Ltd, Lakeside House, Stockley Park, Uxbridge, Middlesex UB11 1BE.

References

1. Mumford JP. Br J Clin Pract 1988; 42 (Suppl 61): 7-9.
2. Browne TR, et al. Neurology 1987; 37: 184-189.
3. Tartara A, et al. Epilepsia 1986; 27: 717-723.
4. Tassinari CA, et al. Arch Neurol 1987; 44: 907-910.
5. Rimmer EM, Richens A. Lancet 1984; 1: 189-190.



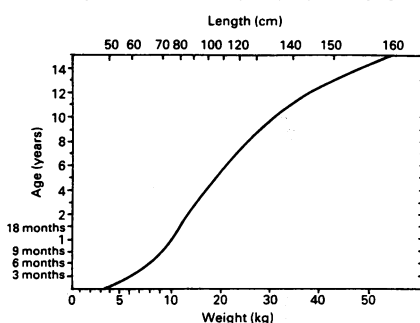
Trademarks: Sabril, Merrell Dow.

**MERRELL
DOW**

Endotracheal tube

Length (cm)	Internal diameter (mm)
18-21	7.5-8.0
18	7.0
17	6.5
16	6.0
15	5.5
14	5.0
13	4.5
12	4.0
11	3.5
10	3.0-3.5

Paediatric resuscitation chart



Adrenaline (ml of 1/10 000) intravenous or endotracheal	0.5	1	2	3	4	5
Atropine (mg) intravenous or endotracheal	0.1	0.2	0.4	0.6	0.6	0.6
Bicarbonate (ml of 8.4%) intravenous	5	10	20	30	40	50
Calcium chloride (mmol)* intravenous	1	2	4	6	8	10
Diazepam (mg) intravenous per rectum	1-25 2.5	2.5 5	5 10	7.5 —	10 —	10 —
Glucose (ml of 50%) intravenous	10	20	40	60	80	100
Lignocaine (mg) intravenous or endotracheal	5	10	20	30	40	50
Salbutamol (µg) intravenous	25	50	100	150	200	250
Initial DC defibrillation (J)	10	20	40	60	80	100
Initial fluid infusion in hypovolaemic shock (ml)	50	100	200	300	400	500

* One millilitre calcium chloride 1 mmol/ml = 1.5 ml calcium chloride 10% = 4.5 ml calcium gluconate 10%

A child is dying: what do you do?

Resuscitating children is different from resuscitating adults—and more difficult. Because cardiorespiratory arrest in children is uncommon each doctor's experience of handling it is limited, and there is a tendency to forget the recommended drug doses; also, because children come in so many different sizes it is hard to judge the correct dose, especially if you do not know the child's weight. Yet delay or inaccuracy in treatment might be fatal. **The Paediatric Resuscitation Chart**, devised by Dr Peter Oakley and based on the guidelines of the Resuscitation Council (UK), gives you at a glance the essential information for making rapid and accurate decisions. The chart is available as an A2 size poster or a pocket sized postcard.

Poster: UK £3.50; Abroad £4.50 including packing and postage, by air abroad.

Single copies of a postcard version of the chart are available, free of charge, on receipt of an A5 stamped addressed envelope (16cm x 24cm; 6in x 9in). Bulk orders please write to the Book Department.

Credit cards are accepted: ACCESS, VISA, AMERICAN EXPRESS (please give full details)

BMJ

BRITISH MEDICAL JOURNAL, BMA HOUSE, TAVISTOCK SQUARE, LONDON WC1H 9JR

MONATS **KINDER** SCHRIFT **HEILKUNDE**

138. Band Heft 12
Dezember 1990

Organ der
Deutschen Gesellschaft
für Kinderheilkunde

Thema des Monats

HIV-Infektionen bei Kindern — Diagnostik und Betreuung
Editorial 783

I. Grosch-Wörner, J. Eberle
HIV-Diagnostik beim Kind —
Methodik, rationeller Einsatz
und Aussagefähigkeit 784

C. Rosendahl,
J. Neumann-Mager,
E. Schroll, E. Fahrenheim,
R. Autenrieth, U. Wintergerst,
B. H. Belohradsky
Psychoziale Probleme in
HIV-infizierten Familien —
Möglichkeiten der Bewäl-
tigung 787

Pädiatrie aktuell

Günstiger Einfluß von
Vitamin A auf den Verlauf
schwerer Masern

Leukotrien-Erhöhung im
Trachealsekret von Säuglin-
gen mit bronchopulmonaler
Dysplasie

Neue Kriterien zur Diagnose
der Zöliakie 791

Was hat das Kind?

Trainingsprogramm für die
Weiterbildung zum Kinder-
arzt 792

Klinik und Forschung

U. Kalker, O. Hövels,
H. Kolbe-Saborowski
Kurz- und mittelfristige
Ergebnisse der Behandlung
von Kindern mit
Adipositas 793

U. Maas, E. Kattner, S. Koch,
A. Schäfer, M. Obladen
Pränatale Entwicklung und
postnatale Morbidität bei
Neugeborenen HIV-positiver
Mütter 799

H. Stiening, R. Szczepanski,
K. E. v. Mühlendahl,
C. Kalveram
Neurodermitis und Nah-
rungsmittelallergie.
Klinische Relevanz von
Testverfahren 803

Der interessante Fall

H. Hebestreit,
J. Pannenbecker,
A.-M. Mingers, H. Bartels
Pellagra unter antikonvulsiver
Behandlung 808

J. Roesler, M. Melter,
A. Emmendorffer, S. Rohde,
J. Brodehl
Chronisch rezidivierende
Stomatitis aphthosa bei einer
15jährigen Konduktorin für
x-chromosomal vererbte
Cytochrom b₅₅₈-negative
septische Granulo-
matose 811

G. Schulz-Lell, H. Schröder,
J. Schaub

Arterielle Thrombose bei
einem Frühgeborenen 814

K. Bloch, A. Witzum,
H. G. Wieser, St. Schmid,
R. Russi
Obstruktives Schlaf-Apnoe-
Syndrom bei einem Kind mit
Trisomie 21 817

Wußten Sie schon?

Aus der Klinik —
für die Klinik

R. Richter, U. Grumpelt,
U. Mittler, U. Kluba
Echokardiographische Unter-
suchungen zur Erkennung
kardiotoxischer Nebenwir-
kungen der Anthrazyklin-
therapie im Kindesalter 823

Was hat das Kind?

Auflösung und Kommentar
des Trainings-
programms 828

Aus Gesellschaften und
Berufsverband 829

Neue Bücher 829

Tagungskalender 831

Sachregister 832

Inhalt Band 138



Springer-Verlag
Berlin Heidelberg New York
London Paris Tokyo
Hong Kong Barcelona

Annual subscription: DM 298,- plus postage

European Journal of

Pediatrics

Incorporating
Acta Paediatrica Belgica
and
Helvetica Paediatrica Acta

Volume 150 No. 1 1990

The pioneers of pediatric medicine
1

Review

Scientifically-based strategies for nutrition of the high-risk low birth weight infant
J. Neu, C. Valentine, W. Meetze 2

Cardiology

Chest X-ray film patterns in children with isolated total anomalous pulmonary vein connection
T. Genz, D. Locher, S. Genz, G. Schumacher, K. Bühlmeier 14

Angiotensin converting enzyme activity in children with congenital heart disease
U. Salzer-Muhar, W. Graninger, H. R. Salzer, M. Wimmer 19

Endocrinology

Sodium chloride supplement at diagnosis and during infancy in children with salt-losing 21-hydroxylase deficiency
P. E. Mullis, P. C. Hindmarsh, C. G. D. Brook 22

Does growth hormone influence the severity of phosphopenic rickets?
T. Bistrizter, S. A. Chalew, A. Hanukoglu, K. M. Armour, P. J. Haney, A. A. Kowarski 26

Growth hormone deficiency of hypothalamic origin in septo-optic dysplasia
S. Yukizane, Y. Kimura, Y. Yamashita, T. Matsui, H. Horikawa, H. Ando, F. Yamashita 30

Imaging techniques

Demonstration of perivascular echogenicities in congenital cytomegalovirus infection by colour Doppler imaging
M. Ries, K.-H. Deeg, U. Heininger 34

Immunology/Allergology

Screening for delayed-hypersensitivity in Italian children: multicentric study by multitest skin testing
M. Bardare, L. Armenio, L. Businco, G. Cavagni, M. De Martino, M. Duse, M. Masi, V. Monafò, M. C. Pietrogrande, P. Tovo, M. C. Venturi 37

Immunological aspects of progeria (Hutchinson-Gilford syndrome) in a 15-month-old child
M. Harjaček, D. Batinić, V. Samavka, B. Užarević, D. Mardešić, M. Marušić 40

Infectious diseases

Reduction of peripheral blood macrophages/monocytes in Kawasaki disease by intravenous gammaglobulin
S. Furukawa, T. Matsubara, K. Jujoh, K. Sasai, S. Nakachi, T. Sugawara, K. Yabuta, H. Kato 43

Epstein-Barr virus infection rapidly progressing to monoclonal lymphoproliferative disease in a child with selective immunodeficiency
V. Schuster, H. W. Kreth, H. K. Müller-Hermelink, H.-I. Huppertz, A. C. Feller, D. Neumann-Haefelin, H. Wiegand, N. Müller-Lantzsch 48

Medical genetics

The Marshall-Smith syndrome
A. Charon, Y. Gillerot, L. Van Maldergem, M. H. Van Schaftingen, B. de Bont, L. Koulischer 54

Metabolic diseases

Excessive urinary oxalate excretion after combined renal and hepatic transplantation for correction of hyperoxaluria type 1
H. Ruder, G. Otto, R. B. H. Schutgens, U. Quersfeld, R. J. A. Wanders, K.-H. Herzog, P. Wöfel, S. Pomer, K. Schärer, G. A. Rose 56

Neonatology

Assessment of neonatal jaundice in low birth weight infants comparing transcutaneous, capillary and arterial bilirubin levels
M. Amato, P. Huppi, D. Markus 59

Nephrology/Urology

Management of neurogenic bladder dysfunction secondary to myelomeningocele
M. Castro-Gago, I. Novo, A. Cimadevila, J. Peña, A. Rodríguez-Núñez, A. Marqués'-Queimadelos 62

Neuropediatrics

Early-onset myasthenia gravis: clinical characteristics and response to therapy
A. P. Batocchi, A. Evoli, M. T. Palmisani, M. Lo Monaco, M. Bartocconi, P. Tonali 66

Respiratory deterioration during growth hormone therapy in a case of congenital nemaline myopathy
K. Logghe, J. M. Wit, F. Jennekens, J. E. H. Pruijs 69

Letters to the editors

How frequent is Capillaria hepatica infestation in Europe?
G. K. Kokai, V. N. Perisic 72

Reply by T. Berger 72

Intravenous immunoglobulin for neonatal isoimmune thrombocytopenia
Ş. Özsoylu 72

Reply by P. Merlob 73

Severe methaemoglobinaemia due to para-chloraniline intoxication in premature neonates
M. M. J. van der Vorst, P. Tamminga, F. A. Wijburg, R. B. H. Schutgens 73

Abstracts

The Summer Meeting of the Scottish Paediatric Society, Dundee, June 8, 1990 74

Indexed in *Current Contents*



Springer International

Subscription information

Volume 149 (12 issues) will appear in 1990. Information about obtaining back volumes and microform editions available upon request.

North America. Annual subscription rate: approx. US \$ 868.00 (single issue price approx. \$ 87.00), including carriage charges. Subscriptions are entered with prepayment only.

Orders should be addressed to:

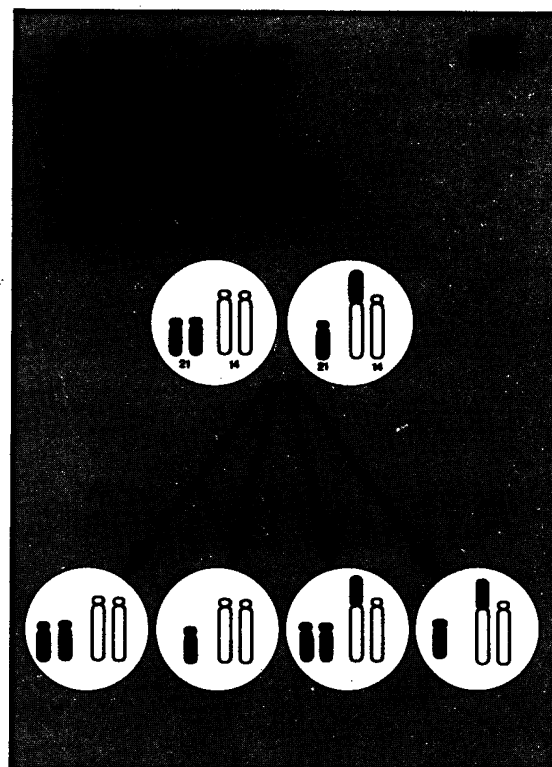
Springer-Verlag New York Inc.
Service Center Secaucus
44 Hartz Way
Secaucus, NJ 07094, USA
Tel. (201) 348-4033
Telex 023125994
FAX (201) 348-4505

All other countries. Annual subscription rate: DM 1532.00 plus carriage charges; Federal Republic of Germany: DM 20.54 incl. value added tax; all other countries: DM 39.00 ex-

cept for the following countries to which SAL delivery (Surface Airmail Lifted) is mandatory: Japan DM 103.80, India DM 75.00, Australia/New Zealand DM 119.40. Airmail delivery to all other countries is available upon request. Volume price: DM 1532.00, single issue price: DM 153.20 plus carriage charges. Subscriptions can either be placed via a bookdealer or sent directly to:

Springer-Verlag
Heidelberger Platz 3, D-1000 Berlin 33
Tel. (0)30/8207-0, Telex 183319
FAX (0)30/8214091

Genetics is a subject fundamental to medicine, but rapid advances in recent years may make the subject complex and confusing to clinicians and paramedical staff outside the specialty. Nevertheless, the demand for genetic investigation and counselling is increasing, and these services need to be offered by clinicians other than clinical geneticists. In the *ABC of Clinical Genetics* Helen Kingston, consultant clinical geneticist at St. Mary's Hospital, Manchester, reviews basic concepts of inheritance in mendelian, chromosomal, and multifactorial disorders; outlines the investigation and management of genetic conditions; and illustrates the application of recombinant DNA technology to clinical practice. Implications of genetic diseases for relatives are also considered, together with the ethical and human dilemmas that face doctors and patients and their families.



ORDER FORM

BRITISH MEDICAL JOURNAL
PO Box 295,
London WC1H 9TE,
or any leading bookseller

Please send me

☐ ABC OF CLINICAL GENETICS

and the following BMJ books:

.....

.....

NAME

ADDRESS

.....

POSTCODE

I enclose BMA Membership No.

Please make cheques payable to British Medical Journal
or debit my credit card (please tick box)

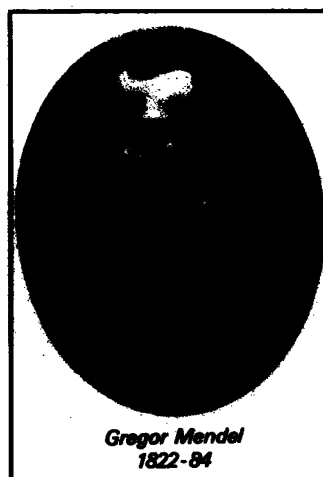
☐ Visa ☐ American Express ☐ Mastercard

Card No.

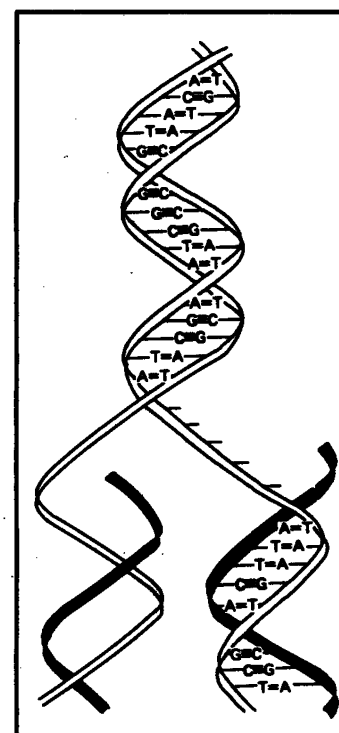
Card expiry date

Signature

☐ Please send me a book catalogue



Gregor Mendel
1822-84




Inland £10.95; Abroad £13.00

BMA Members:

Inland £9.95; Abroad £12.00

including postage, by air abroad



All the benefits of
the NovoPen® system
are in the bag

PenMix 30/70 is the first pre-mixed insulin for use
in the NovoPen system.

At last diabetic patients can benefit from a simple bd
insulin regimen with the added convenience of NovoPen II.

INTEGRATED DIABETIC CARE

Abbreviated Prescribing Information PenMix® 30/70 100iu/ml (Biphasic Isophane Insulin Injection 30/70. Human Insulin (pyr). **Indications:** The treatment of insulin-requiring diabetics. **Dosage and Administration:** The dosage is determined by the Physician according to the needs of the patient. Given by subcutaneous injection and intended for use in the NovoPen and NovoPen II injection devices only. (See instructions for use of devices.) Resuspend before use by agitating up and down. **Contra-indications:** Hypoglycaemia. **Precautions:** Injections of PenMix 30/70 should be followed by a meal within 30 minutes of administration. A dosage reduction may be required on transfer from bovine or mixed species insulin. Reduction of early warning symptoms for hypoglycaemia reported by a few patients on transfer from animal source to human insulin. Beta blockers, MAOI's and alcohol may enhance hypoglycaemic effect of insulin. Corticosteroids, thyroid hormones, oral contraceptives may increase insulin requirements. **Use in Pregnancy:** Insulin



PENMIX® 30/70

Human pre-mixed neutral and isophane insulin (pyr)

requirements usually fall during first trimester and increase during second and third trimester. **Side-effects:** Lipodystrophy insulin resistance and hypersensitivity are rarely reported with human insulin. **Product Licence Number and Basic NHS Price:** PL 4668/0020. 5x1.5ml cartridges £8.10. **Product Licence Holder:** Novo Nordisk A/S, Novo Alle, DK-2880 Bagsvaerd, Denmark. **Sole Distributor:** Farillon Limited, Ashton Road, Harold Hill, Romford, Essex RM3 8UE. **Further Information is available on request from:** Novo Nordisk Pharmaceuticals Ltd, Novo Nordisk House, Broadfield Park, Brighton Road, Pease Pottage, Crawley, West Sussex RH11 9RT. Tel: 0293 613555. Fax: 0293 613535.

*Registered Trade Mark of Novo Nordisk A/S
April 1990

Leading the way in diabetic care

FOR FREE NOVOPEN II SUPPLIES DIAL 100 FREEPHONE NOVO NORDISK INSULIN.

