

"It's elemental my dear Watson"

new

For the effective nutritional care of infants with malabsorption problems, the answer may be elemental.

Pepti-Junior is a balanced elemental feed, which is easily digested and well absorbed.^{1,4} It has been specially developed for infants and young children with digestive or malabsorption problems and/or severe food intolerances.

Pepti-Junior is well tolerated,¹ with a highly palatable taste.

The formulation comprises hydrolysed whey protein, glucose syrup, MCT oil, maize oil, minerals and vitamins.

Osmolality is low at 210 mosmol/kg H₂O.

PEPTI- JUNIOR

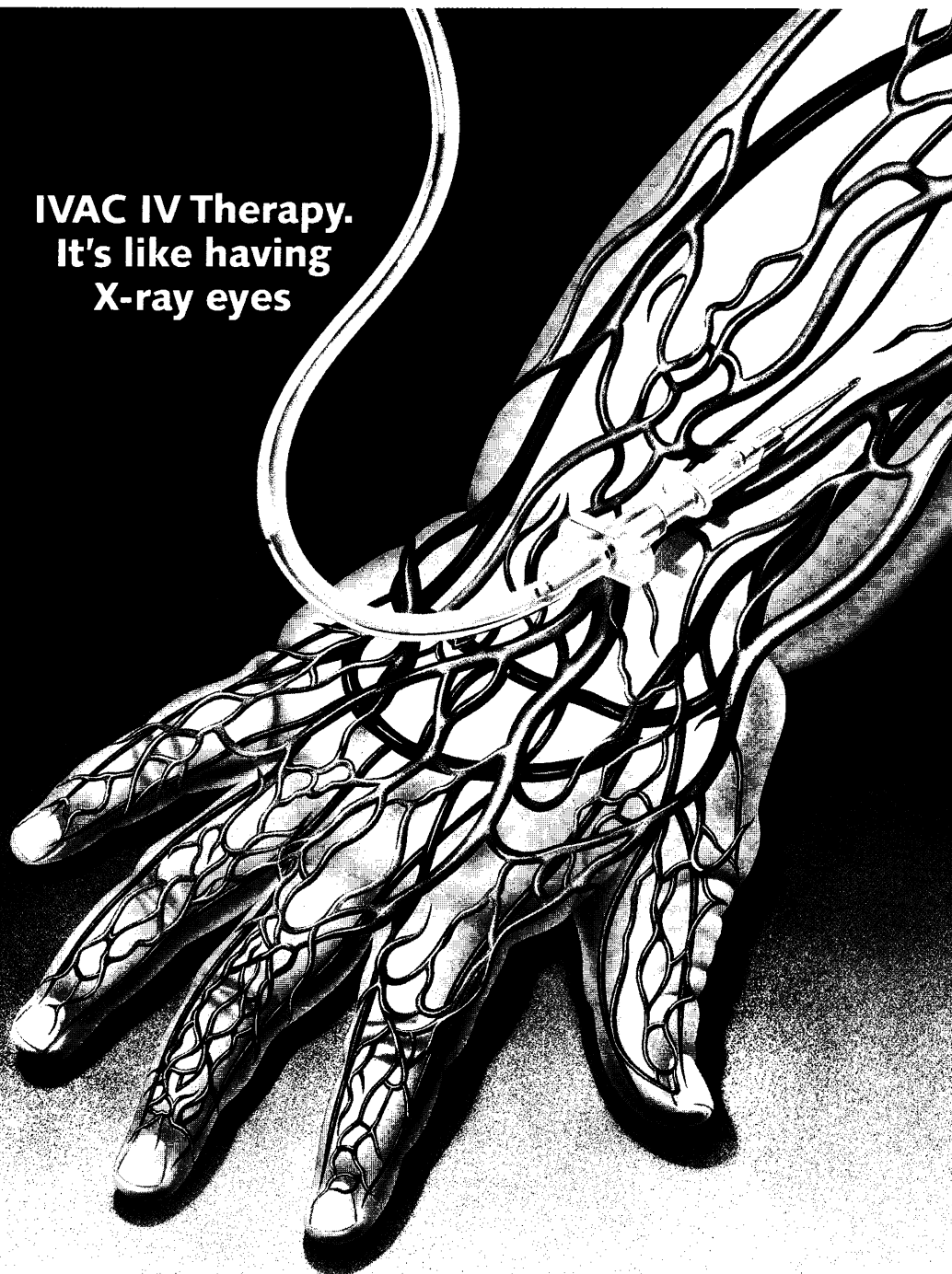
Pepti-Junior is ACBS prescribable, and the latest addition to the extensive Cow & Gate range of Specialised Formula Foods.

**Cow
& Gate**

The balanced elemental formula for infant malabsorption

References 1. Taylor CJ, Jenkins P, Manning D *Clinical Nutrition*, 1988; 7: 183-190. 2. Keohane PP, Grimble GK, Brown B et al. *Gut*, 1985; 26: 907-913. 3. Silk DBA et al. *JPEN*, 1980; 4: 548-553. 4. Silk DBA et al *Gut* 1979; 20: 291-299. Breast milk is the best milk for babies. PEPTI-JUNIOR has been prepared for infants with impaired gastrointestinal function and/or severe food intolerances. PEPTI-JUNIOR should only be used under strict medical supervision. For further information contact Cow & Gate, Medical Department, Trowbridge, Wiltshire BA14 8YX. (0225 768381).

**IVAC IV Therapy.
It's like having
X-ray eyes**



Unfortunately, the most common causes of IV complications are not always visible to the naked eye, so you have to trust the IV instrument to help you.

Imagine a blocked IV, the patient stops receiving critical medication, or imagine a vesicant solution, such as potassium which is being infused interstitially due to an infiltration.

You need to know about it fast.
Fast enough to take corrective action before

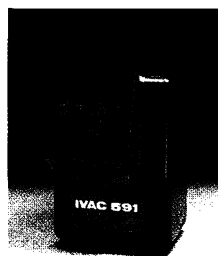
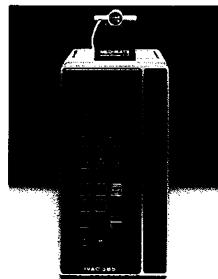
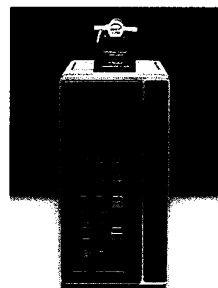
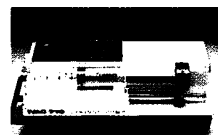
the patient is at risk.

IVAC instruments actually 'monitor' the IV site while they deliver the medication, to let you know what's happening fast and keep you better informed.

Fast warning of IV problems, consistent, accurate delivery and simple operation all helps take the risk out of IV therapy.

And unless you've got X-ray eyes IV therapy can really be like working in the dark.

Call us - Telephone (0256) 474455



**NO ONE
KNOWS MORE
ABOUT
IV CONTROL**

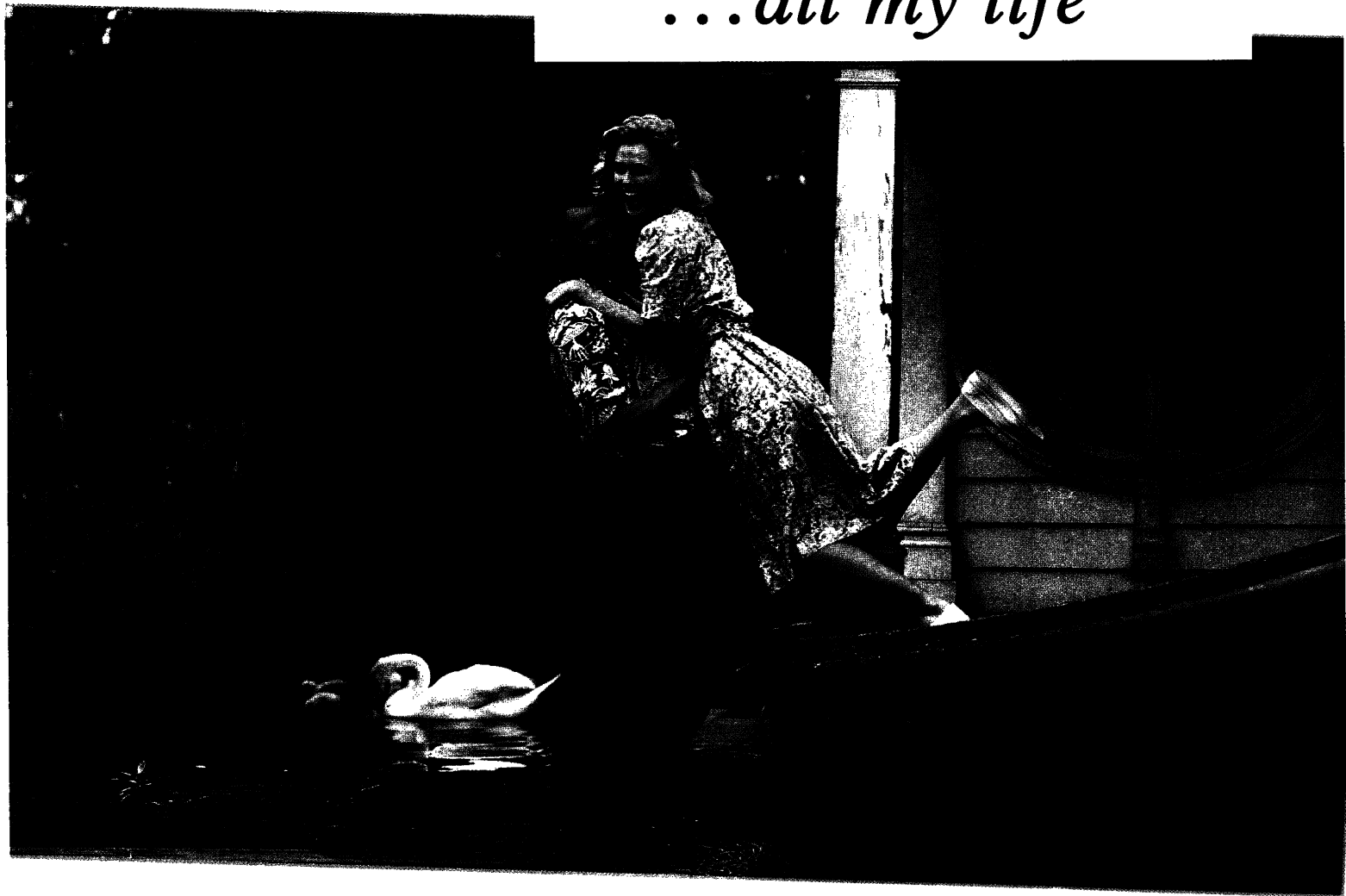
A Lilly Medical Instrument Systems Company

IVAC

*Mark owned by IVAC Corporation

IVAC, INTEC 2 BUILDINGS, WADE ROAD, BASINGSTOKE, HANTS RG24 ONE.

“Days
to remember
...all my life”



Abbreviated Prescribing Information

Presentation: Human Mixtard 30/70 (Bi-phasic Insulin Injection 30/70, Human Insulin (emp)), 10ml vials containing 100 IU/ml. **Uses:** Treatment of insulin-requiring diabetic patients. **Dosage and Administration:** The dosage is determined by the physician. Human Mixtard 30/70 may be given subcutaneously or intramuscularly. The suspension should be well mixed by gently inverting the vial several times. Care should be taken to avoid accidental intravascular injection. The injection site should be changed regularly. **Contra-indications:** Hypoglycaemia. **Precautions:** Some patients previously treated with insulin of beef or pork origin may require a dosage adjustment on transfer to highly purified human insulin (emp). This is more likely in patients previously treated with beef or mixed beef/pork insulin. Reduction of early warning symptoms for hypoglycaemia may be seen upon tightening control and has been reported by a few patients on transfer from animal source to human insulin. Hyperglycaemia can be enhanced by drugs including triiodothyronine; thyroxine; various natural and synthetic steroids, diuretics and cyclophosphamide. Certain beta-blockers may affect insulin requirements and mask signs of hypoglycaemia. Monoamine oxidase inhibitors (MAOI) may potentiate insulin action. **Side Effects:** Local reactions at the injection site are rare and may include transient erythema, induration, urticaria and oedema. True generalised hypersensitivity reactions are very rare. Localised lipodystrophy is rare but cannot be totally excluded. **Use in Pregnancy and Lactation:** It is important to maintain continuous good glycaemic control during conception and throughout pregnancy. **Use in the elderly:** Insulin may have a more prolonged action, dose requirements should be regularly reviewed. **Product Licence Number:** Human Mixtard 30/70 3132/0037. **Basic NHS Price:** 10ml glass vial £8.45. **Product Licence Holder:** Novo Nordisk Pharmaceuticals Ltd, Novo Nordisk House, Broadfield Park, Brighton Road, Pease Pottage, Crawley, West Sussex RH11 9RT, England. Tel: 0293 613555. Fax: 0293 613535. © Registered Trade Mark of Novo Nordisk. **Further Information Available on Request.** June 1990.

Leading the way in diabetic care.

For many diabetics, convenience can matter just as much as control.

That is why Human Mixtard 30/70 is such an appropriate choice for diabetics of all ages.

Human Mixtard 30/70 lets them get on with enjoying their lives without the fuss and bother of complex in-syringe insulin mixing.

HUMAN
MIXTARD®

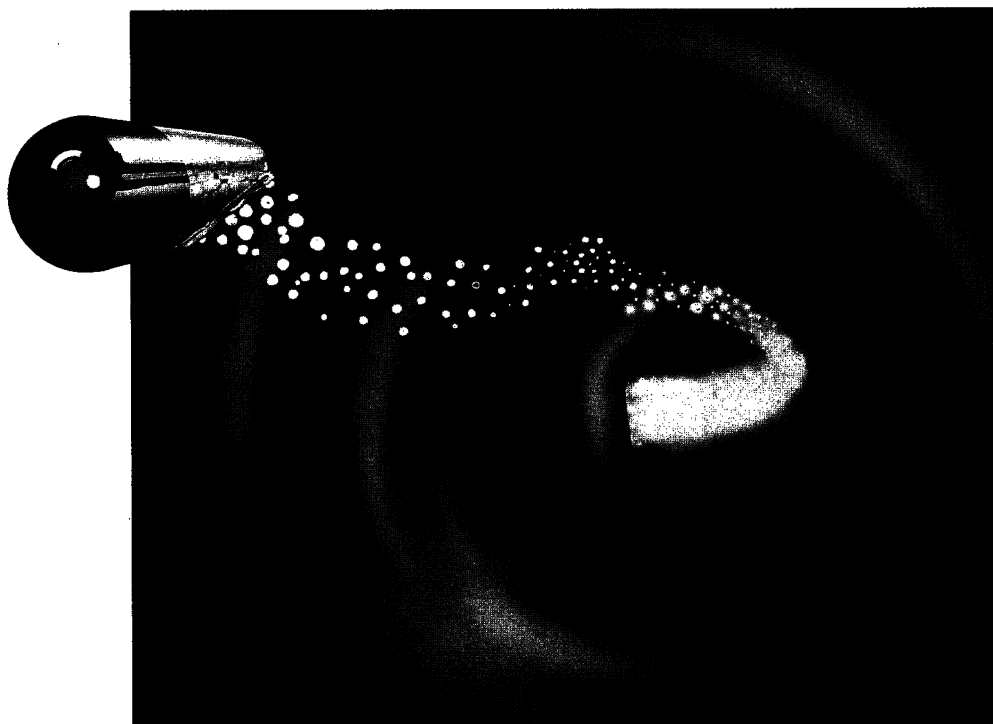
Human premixed
neutral and isophane insulin (emp)

CONVENIENCE WITH CONTROL
ALL IN ONE EASY STEP



PROGRESS

In The Management Of Cystic Fibrosis



creon[®] 
pancreatin

RIGHT ON TARGET – RIGHT FROM THE START

Prescribing Information – Presentation: Brown-yellow capsules containing enteric coated granules of pancreatin equivalent to: 9,000 BP units of amylase, 8,000 BP units of lipase, 210 BP units of protease. Available in packs of 100. Basic NHS price £13.33. **Indication:** Pancreatic exocrine insufficiency. **Dosage and administration:** Adults and children: Initially one or two capsules with meals, then adjust according to response. The capsules can be swallowed whole, or for ease of administration they may be opened and the granules taken with fluid or soft food, but without chewing. If the granules are mixed with food, it is important that they are taken immediately, otherwise dissolution of the enteric coating may result.

Contra-indications, Warnings, etc: Contra-indications: Substitution with pancreatic enzymes is contra-indicated in the early stages of acute pancreatitis. **Warnings:** Use in pregnancy: There is inadequate evidence of safety in use during pregnancy. The product is of porcine origin. Rarely cases of hyper-uricosuria and hyper-uricaemia have been reported with high doses of pancreatin. Overdosage could precipitate meconium ileus equivalent. Perianal irritation could occur, and, rarely, inflammation when large doses are used. **Product Licence Number:** 5727/0001. **Name and address of Licence Holder:** Kali Chemie Pharma GmbH, Postfach 220, D-3000, Hannover 1, West Germany.

duphar Further information is available from:
Duphar Laboratories Limited, Gaters Hill, West End, Southampton SO3 3JD. Tel: 0703 472281.

CRA4/PE1/1/89

WHAT'S A FEW INCHES BETWEEN FRIENDS?



For the girl with
Turner Syndrome
it can mean
getting the most
out of childhood.

Genotropin is
now indicated for
the treatment of
short stature in
Turner Syndrome.

The earlier
Genotropin
treatment is started
the greater is the
effect on growth.*

GenotropinTM

somatropin (rbe)



ABBREVIATED PRESCRIBING INFORMATION **Presentation** Genotropin 12IU Multidose A vial of sterile lyophilised powder containing 12 IU somatropin (rbe) supplied with 3 ml of Water for Injections with 0.25% m-cresol for reconstitution. Genotropin 4IU A vial of sterile lyophilised powder containing 4 IU somatropin (rbe) supplied with 1 ml of Water for Injections. **Indications** The treatment of short stature caused by decreased or absent secretion of pituitary growth hormone. The diagnosis should be verified by a specialist medical practitioner. Short stature in gonadal dysgenesis (Turner Syndrome). **Reconstitution** Add 3 ml of Water for Injections with 0.25% m-cresol to the 12 IU and 1 ml Water for Injections to the 4 IU in the vial. Dissolve the drug gently without shaking vigorously. **Dosage and Administration** Administer by subcutaneous injection. Generally a dose of 0.5 - 0.7 IU/kg body weight per week is recommended divided into six or seven subcutaneous injections. In Turner Syndrome a dose of 1.0 IU/kg body weight per week is recommended. **Contra-Indications** Only patients with unfused epiphyses should be treated. **Precautions** Patients with diabetes mellitus may require adjustment of their antidiabetic therapy. Patients treated with Genotropin should be regularly assessed by a child growth specialist. The injection site should be rotated to prevent lipatrophy. **Pregnancy and Lactation** In the event of pregnancy occurring during Genotropin therapy, treatment should be discontinued. No information is available as to whether peptide hormones pass into breast milk. **Side-Effects** A few children have developed transient local reactions. In Turner Syndrome temporary exacerbation of lymphoedema has been reported. Antibodies towards growth hormone may be formed in some patients but these antibodies rarely have clinical significance. **Pharmaceutical Precautions** Store between 2-8°C and protect from light. Reconstituted Genotropin 12 IU Multidose may be used over a period of 21 days if kept in the refrigerator. Genotropin 4 IU is for single use only. **Legal Category** POM. **Package Quantities** Genotropin 12 IU Multidose Combined pack containing one vial of somatropin (rbe) 12 IU and one ampoule of 3 ml Water for Injections with 0.25% m-cresol. Genotropin 4 IU Two pack sizes of Genotropin 4 IU are available: a combined pack containing one vial of somatropin (rbe) 4 IU and one ampoule of 1 ml Water for Injections; and a combined pack containing ten vials of somatropin (rbe) 4 IU and ten ampoules of 1 ml Water for Injections. **Product Licence Numbers** Genotropin 12 IU Multidose PL 0022/0079. Water for Injections with 0.25% m-cresol PL 0022/0081. Genotropin 4 IU PL 0022/0071. Water for Injections PL 0022/0082. **Price NHS Prices:** 12 IU Multidose £91.50 4 IU £30.50 10 x 4 IU £305.00. **Product Licence Holder** KabiVitrum Ltd, Dukes Meadow, Millboard Road, Bourne End, Bucks SL8 5XF. Further information is available on request from the Product Licence Holder. **SPECIAL REPORTING TO CSM REQUIRED**

KABI
KV 985 3/90

That's better!



Infant Gaviscon®

Sodium Alginate Magnesium Alginate
Dried Aluminium Hydroxide Gel

***When infant reflux needs firm
but gentle relief***



Further information is available on request.
Reckitt & Colman Pharmaceuticals, Hull HU8 7DS.
®GAVISCON is a registered trade mark.

Med Paed Agency

**Exclusive for Paediatric Locums
All Grades**

Top Rates, Bonus Payments

Prompt Payment

57 Bradley Road

Upper Norwood

SE19 3NT

081 771 4481

THE HEINZ FELLOWSHIPS OF THE BRITISH PAEDIATRIC ASSOCIATION

H. J. Heinz Company Limited generously endows Fellowships in Paediatrics which are administered by the British Paediatric Association.

Two or three Fellowships will be offered each year, the number and type awarded in any one year depending on circumstances and the calibre of applicants available.

The types of Fellowship, which are open to men or women are

A To enable paediatricians from any part of the Commonwealth overseas to spend up to twelve weeks in the United Kingdom, meeting British Paediatricians and seeing something of their work. Preference will be given to those recently established in an academic career who can arrange their visit to allow attendance at the Annual Meeting of the British Paediatric Association in April 1992.

C To enable paediatricians from the United Kingdom of Registrar, Senior Registrar, or Consultant status, or non-medically qualified members of the Association, in the early years of professional life to make a short working visit (up to three months) to a centre in a developing country, teaching or conducting research so as to benefit both fellow and hosts.

Applications for A Fellowships must be received by the British Paediatric Association not later than 31st December 1990

Applications for C Fellowships can be accepted by 31st January, or 31st July 1991.

The conditions for the Fellowships and applications forms may be obtained from the British Paediatric Association, 5 St Andrew's Place, Regent's Park, London NW1 4LB.

MONATS KINDER SCHRIFT HEILKUNDE

138. Band Heft 5
Mai 1990

Organ der
Deutschen Gesellschaft
für Kinderheilkunde

Thema des Monats

Infektionskrankheiten II
Editorial 239
K. Stehr
Haemophilus influenzae
Typ B — Erkrankung und
Prophylaxe 240
J. E. Hoppe
Keuchhusten: Diagnostik,
Klinik und Therapie 244
K. M. Debatin
Die symptomatische HIV-
Infektion. Ansätze zu einer
sinnvollen Therapie 249

Pädiatrie aktuell

Die Behandlung der
bronchopulmonalen
Dysplasie Frühgeborener
mit Dexamethason erhöht
nicht die Inzidenz
bakterieller Infektionen
Psychosozialer Streß und
Übergewicht bei
Schulkindern
Ist bei Kindern mit isolierter
Thrombozytopenie eine
Knochenmarkpunktion zum
Ausschluß einer akuten
lymphatischen Leukämie
indiziert? 254

Was hat das Kind?

Trainingsprogramm für die
Weiterbildung zum Kinder-
arzt 255

Klinik und Forschung

K. H. Deeg, K. Woerle,
E. Schönau
Farbkodierte Doppler-
Sonographie der Nieren-
gefäße im Kindesalter.
I. Methode und Normal-
befunde 256
W. Rascher, A. B. Bello,
B. Lettgen, G. Guth-Jougelidis,
St. Müller, Chr. Reiners,
E. Löhr
Diagnostische Bedeutung
der Captopril-Radionuklid-
nephrographie für die
renovaskuläre Hypertonie im
Kindesalter 268
L. Gortner, F. Pohlandt,
P. Bartmann
Wirkung einer bovinen
Surfactant bei sehr kleinen
Frühgeborenen mit
konnataler Pneumonie 274
R. Schück, J. Knetsch,
K. H. Deeg, H. P. Hümmer
Diagnose und Behandlung
von Adnextumoren im
Kindes- und Jugend-
alter 279
H. Bussmann, H. Roth,
O. v. Deimling, W. Nützenadel
Variabilität klinischer
Symptome bei neuronaler
intestinaler Dysplasie 284

Der interessante Fall

J.-U. Walther
Konkordante Myaplasie der
Thoraxwand bei eineiigen
Zwillingen
(Poland-Anomalie) 288
H. Lackner, Ch. Urban,
M. Riccabona, H. Sauer,
F. Ebner, M. Ratschek
Teratom des Magens bei
einem 4-Tage-alten
Neugeborenen 291

Wußten Sie schon?

Aus der Praxis —
für die Praxis
H. Moll
Neues Programm der
Deutschen Akademie für
Entwicklungs-Rehabilitation
e. V. 294

Was hat das Kind?

Auflösung und Kommentar
des Trainings-
programms 294

Neue Bücher 295

Tagesgeschichte 297
Tagungskalender 297



Springer-Verlag
Berlin Heidelberg New York
London Paris Tokyo Hong Kong

Annual subscription: DM 298,- plus postage

European Journal of

Pediatrics

Incorporating

Acta Paediatrica Belgica

and

Helvetica Paediatrica Acta

Volume 149 No. 8 1990

The pioneers of pediatric medicine
517

Review

Primary hyperoxaluria type I
K. Latta, J. Brodehl 518

Cardiology

Criss-cross heart evaluated by colour Doppler echocardiography and magnetic resonance imaging
H. Igarashi, T. Kuramatsu, H. Shiraishi, M. Yanagisawa 523

Dermatology

Blue rubber-bleb naevus syndrome: report of a case with consumption coagulopathy complicated by manifest thrombosis
W. J. D. Hofhuis, A. P. Oranje, J. Bouquet, M. Sinaasappel 526

Endocrinology

Comparison of atrophic and goitrous auto-immune thyroiditis in children: clinical, laboratory and TSH-receptor antibody studies
N. Matsuura, J. Konishi, K. Yuri, S. Harada, K. Fujieda, Y. Nohara, Y. Mikami, K. Kasagi, Y. Iida, A. Hosoda, A. Okuno 529

Premature thelarche: a possible adverse effect of cimetidine treatment
J. M. Bosman, N. M. A. Bax, J. M. Wit 534

Subscription information

Volume 149 (12 issues) will appear in 1990. Information about obtaining back volumes and microform editions available upon request.

North America. Annual subscription rate: approx. US \$ 868.00 (single issue price approx. \$ 87.00), including carriage charges. Subscriptions are entered with prepayment only.

Growth hormone deficiency in children: role of magnetic resonance imaging in assessing aetiopathogenesis and prognosis in idiopathic hypopituitarism
C. Pellini, B. di Natale, R. De Angelis, N. Bressani, G. Scotti, F. Triulzi, G. Chiumello 536

Hematology/Oncology

Concurrence of transient asplenia and pure red cell aplasia
M. F. Ozkaynak, J. A. Ortega, J. Miller 542

Immunology/Allergology

Oral immunotherapy with grass pollen in enterosoluble capsules. A prospective study of the clinical and immunological response
R. Urbanek, K. H. Bürgelin, S. Kahle, W. Kuhn, U. Wahn 545

Increase of CALLA-positive stimulated lymphoid cells in transient erythroblastopenia of childhood
S. Leuschner, S. Bödewaldt-Radzun, M. Rister 551

Infectious diseases

Three cases of neonatal herpes simplex virus infection presenting as fulminant hepatitis
N. Benador, W. Mannhardt, D. Schranz, C. Braegger, S. Fanconi, S. Hassam, V. Talebzadeh, J. Cox, S. Suter 555

Acute mastoiditis: clinical, microbiological, and therapeutic aspects
D. Nadal, P. Herrmann, A. Baumann, A. Fanconi 560

Medical genetics

Congenital scalp and skull defects with terminal transverse limb anomalies (Adams-Oliver syndrome): report of three additional cases
E. Jaeggi, C. Kind, R. Morger 565

Autistic disorder in Sotos syndrome: a case report
J. D. Morrow, B. Y. Whitman, P. J. Accardo 567

Metabolic diseases

The effect of fasting hyperinsulinaemia on physical fitness in obese children
D. Molnár, J. Pörszäs 570

Biochemical and clinical observations in four patients with fructose-1,6-diphosphatase deficiency
P. Bührdel, H.-J. Böhme, L. Ditt 574

Early diagnosis and treatment of neonatal medium-chain acyl-CoA dehydrogenase deficiency: report of two siblings
C. Catzeflis, C. Bachmann, D. E. Hale, P. M. Coates, U. Wiesmann, J. P. Colombo, F. Joris, G. Deléze 577

Symmetrical necrosis of the basal ganglia in methylmalonic acidemia
A. M. Roodhooft, E. R. Baumgartner, J. J. Martin, W. Blom, K. J. Van Acker 582

Neonatology

Very early prolonged premature rupture of membranes and survival
J. H. Hoekstra, R. de Boer 585

Impact of hyperbilirubinaemia and transient mother-child separation in the neonatal period on mother-child attachment in the 1st year of life
A. Schedle, H. S. Fricker 587

Psychology/Child psychiatry

Pain symptoms in an adolescent Italian population
G. Magni, G. Canton, L. Gallimberti 592

Letters to the editors

Therapeutic attempts in sulphite oxidase deficiency
P. Kamoun, P. Tardy 594

Association of Wilms tumour with spina bifida occulta
P. Kajtár, J. Weisenbach, K. Méhes 594

A new therapeutic approach for X-linked adrenoleukodystrophy
M. Cappa, E. Bertini, M. Di Capua, M. Rimoldi, G. Uziel 595

Indexed in *Current Contents*



Springer International

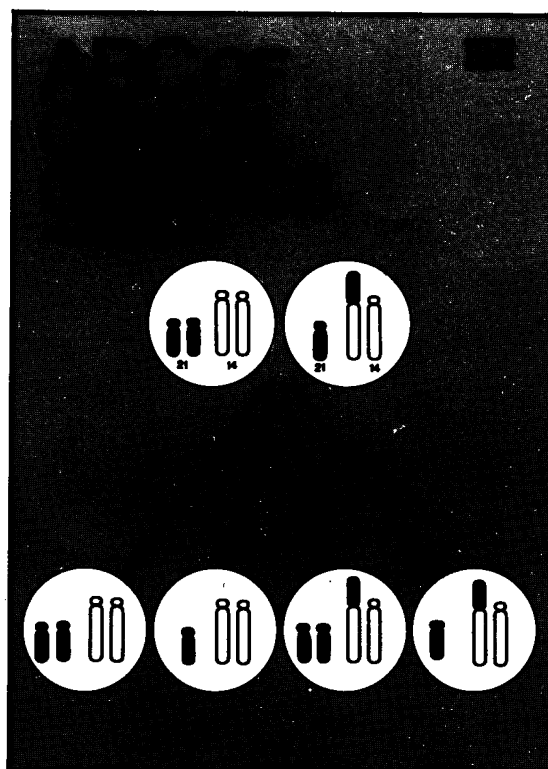
Orders should be addressed to:
Springer-Verlag New York Inc.
Service Center Secaucus
44 Hartz Way
Secaucus, NJ 07094, USA
Tel. (201) 348-4033
Telex 023 125 994
FAX (201) 348-4505

All other countries. Annual subscription rate: DM 1532.00 plus carriage charges; Federal Republic of Germany: DM 20.54 incl. value added tax; all other countries: DM 39.00 ex-

cept for the following countries to which SAL delivery (Surface Airmail Lifted) is mandatory: Japan DM 103.80, India DM 75.00, Australia/New Zealand DM 119.40. Airmail delivery to all other countries is available upon request. Volume price: DM 1532.00, single issue price: DM 153.20 plus carriage charges. Subscriptions can either be placed via a bookdealer or sent directly to:

Springer-Verlag
Heidelberger Platz 3, D-1000 Berlin 33
Tel. (0)30/82 07-0, Telex 183 319
FAX (0)30/82 140 91

Genetics is a subject fundamental to medicine, but rapid advances in recent years may make the subject complex and confusing to clinicians and paramedical staff outside the specialty. Nevertheless, the demand for genetic investigation and counselling is increasing, and these services need to be offered by clinicians other than clinical geneticists. In the *ABC of Clinical Genetics* Helen Kingston, consultant clinical geneticist at St. Mary's Hospital, Manchester, reviews basic concepts of inheritance in mendelian, chromosomal, and multifactorial disorders; outlines the investigation and management of genetic conditions; and illustrates the application of recombinant DNA technology to clinical practice. Implications of genetic diseases for relatives are also considered, together with the ethical and human dilemmas that face doctors and patients and their families.



ORDER FORM

BRITISH MEDICAL JOURNAL
PO Box 295,
London WC1H 9TE,
or any leading bookseller

Please send me

☐ ABC OF CLINICAL GENETICS

and the following BMJ books:

.....
.....

NAME

ADDRESS

POSTCODE

I enclose BMA Membership No.

Please make cheques payable to British Medical Journal
or debit my credit card (please tick box)

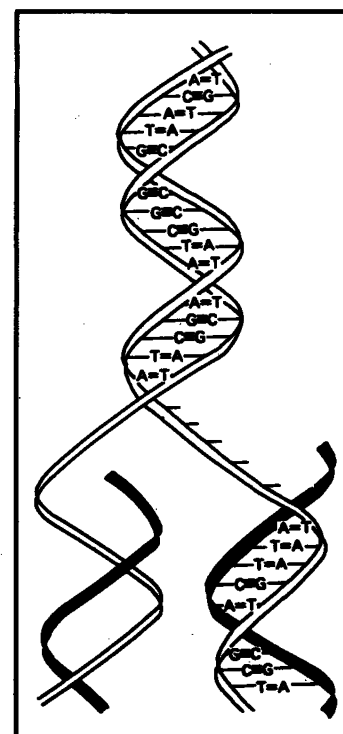
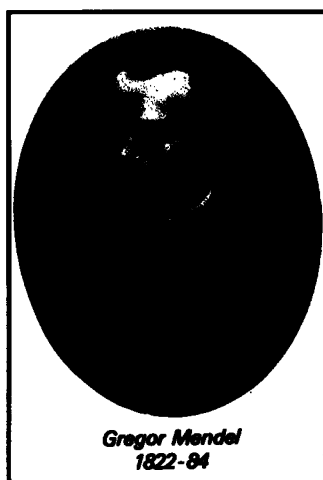
☐ Visa ☐ American Express ☐ Mastercard

Card No.

Card expiry date

Signature

☐ Please send me a book catalogue



Inland £10.95; Abroad £13.00
BMA Members:
Inland £9.95; Abroad £12.00
including postage, by air abroad



Now more of your diabetics will be able to take up the pen

Abbreviated Prescribing Information PenMix® 30/70 100iu/ml (Biphasic Isophane Insulin Injection 30/70. Human Insulin (pyr). **Indications:** The treatment of insulin-requiring diabetics. **Dosage and Administration:** The dosage is determined by the Physician according to the needs of the patient. Given by subcutaneous injection and intended for use in the NovoPen and NovoPen II injection devices only. (See instructions for use of devices.) Resuspend before use by agitating up and down. **Contra-indications:** Hypoglycaemia. **Precautions:** Injections of PenMix 30/70 should be followed by a meal within 30 minutes of administration. A dosage reduction may be required on transfer from bovine or mixed species insulin. Reduction of early warning symptoms for hypoglycaemia may be seen upon tightening control and has been reported by a few patients on transfer from animal source to human insulin. Beta blockers, MAOI's and alcohol may enhance hypoglycaemic effect of insulin. Corticosteroids, thyroid hormones, oral contraceptives may increase insulin

requirements. **Use in Pregnancy:** Insulin requirements usually fall during first trimester and increase during second and third trimester. **Side-effects:** Lipodystrophy insulin resistance and hypersensitivity are rarely reported with human insulin. **Product Licence Number and Basic NHS Price:** PL 4668/0020, 5x1.5ml cartridges £8.10. **Product Licence Holder:** Novo Nordisk A/S, Novo Alle, DK-2880 Bagsvaerd, Denmark. **Sole Distributor:** Farillon Limited, Ashton Road, Harold Hill, Romford, Essex RM3 8UE. **Further Information is available on request from:** Novo Nordisk Pharmaceuticals Ltd, Novo Nordisk House, Broadfield Park Brighton Road, Pease Pottage, Crawley, West Sussex RH11 9RT. Tel: 0293 613555.
*Registered Trade Mark of Novo Nordisk A/S
February 1990

Leading the way in diabetic care

