

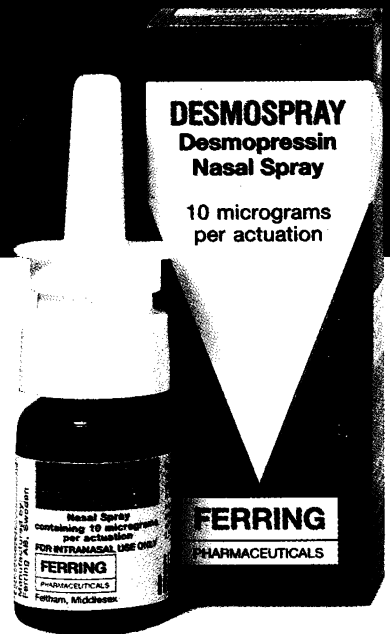
NOCTURNAL ENURESIS?



Dry nights start with **DESMOSPRAY®** DESMOPRESSIN NASAL SPRAY

The new physiological approach to Nocturnal Enuresis

Recent information indicates that bedwetters with primary nocturnal enuresis may produce excessive volumes of urine overnight owing to inadequate nocturnal levels of vasopressin (antidiuretic hormone). DESMOSPRAY at bedtime can correct this overnight polyuria, by supplementing the patients' own ADH with DESMOPRESSIN, the established vasopressin analogue with enhanced antidiuretic activity. DESMOSPRAY sprayed into each nostril at bedtime is usually sufficient to control bedwetting in this large group of sufferers, leading to dry nights.



ABRIDGED PRESCRIBING INFORMATION

Presentation: Metered dose pre-compression atomiser delivering 10 micrograms Desmopressin per spray. **Uses:** Desmopressin is a structural analogue of the natural antidiuretic hormone vasopressin, with increased antidiuretic activity and prolonged duration of action. The pressor activity is greatly reduced as a result of which side-effects are rarely seen. **INDICATIONS AND DOSAGE:** Primary Nocturnal Enuresis Adults and children from 5 years of age: one spray in each nostril (20 micrograms) at bedtime. The dose may be increased up to 2 sprays in each nostril (40 micrograms) if the lower dose is not sufficiently effective. The treatment should not be prescribed for more than 28 days. **Treatment of Diabetes Insipidus:** The average maintenance dose in adults and children is one or two sprays (10 to 20 micrograms) once or twice daily. **Contra-indications:** When used to control Primary Nocturnal Enuresis DESMOSPRAY should only be used in patients with normal blood pressure. **Precautions:** DESMOSPRAY should be used with caution in pregnant patients although the oxytocic effect is very low. Care should be taken with patients who have reduced renal function and/or cardiovascular disease. Fluid overload should be avoided and patients should only take as much fluid as required to satisfy thirst. **Legal category:** POM. **Package quantity:** 5 ml bottle. **Basic N.H.S. Price:** £19.92. **PL No:** 3194/0024. **PL Holder:** Ferring Pharmaceuticals Ltd, 11 Mount Road, Feltham, Middlesex TW13 6JG. DESMOSPRAY is a trademark.

Further information available and should be consulted before prescribing - Ferring Pharmaceuticals Ltd, 11 Mount Road, Feltham, Middlesex TW13 6JG

FERRING
PHARMACEUTICALS

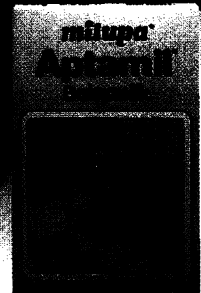
Three good reasons for



*...start for baby. Easily digested and
...tion and natural protective
properties.*

Aptamil.®

*A well-digested babymilk for the baby bottle-fed
from birth, or moving on from breast milk.*



Little Experts to smile.

The first days with baby are full of new experiences and little discoveries to share. Feeding is just one of the areas that new parents often find a little bewildering. What to feed? When to feed? How much to feed?

These three babies all have different needs, but each is happily settling down to a regime of good feeding. There's Jennifer getting the very best with her mother's breast milk. And Simon and Chloe whose mothers decided to bottle-feed, are being fed Milupa babymilks – the very acceptable alternative.

Breast milk. Jennifer was breastfed from birth and soon happily settled to this ideal way of feeding, and she thrived on it. Had she been born premature, Jennifer could still have been fed on her mother's own expressed breast milk, or Milupa's new preterm formula – Milupa

Prematil, specially formulated for low birthweight babies. Or a combination of both.

Aptamil. Simon was bottle-fed straight from birth. For him, Aptamil was just right. This formula is designed for babies who have never been

breastfed, and those bottle-fed from an early age.

Milumil. Breastfed at birth, then bottle-fed later, Chloe needed a different nutritional balance from Aptamil. Milumil, with its higher levels of protein and carbohydrate, helped keep her smiling.

Milupa babymilks are used in hospitals throughout Great Britain and Europe.

Well digested, well accepted, and granulated for easy use, they are known by mothers for their excellent taste and certainly appreciated by their Little Experts...

Because they have the last word (even before they can say one!)

Their smiles say it all.

IMPORTANT: Breast milk is the best milk for a baby. A doctor, midwife, nurse or health visitor should be consulted for any advice needed. If a babymilk is used it is important for the baby's health that all preparation instructions are followed carefully.

milupa®

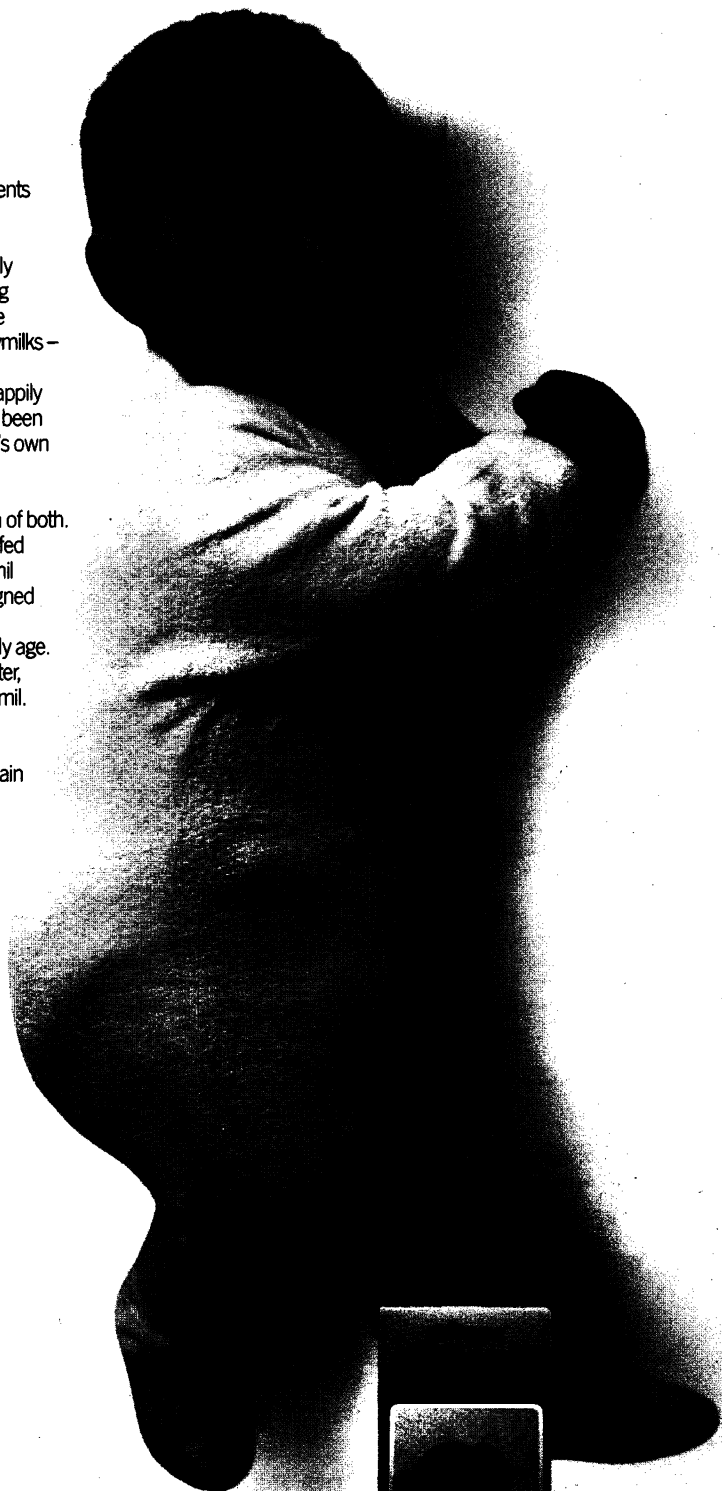
Milupa babymilks. Well digested and well accepted.

Milupa Ltd., Milupa House, Uxbridge Road, Hillingdon, Uxbridge, Middlesex UB10 0NE. Tel: 01-573 9966.

G. Eiborn and M.M. Kerr. June 1982 Midwives Chronicle and Nursing Notes p. 210 – 211.

Milumil.®

A well-accepted babymilk¹ with higher levels of protein and carbohydrate. For continued nourishment throughout the first year.



Monatsschrift Kinder- heilkunde

Organ der
Deutschen Gesellschaft
für Kinderheilkunde

136. Band
Heft 9
September 1988

Springer-Verlag
Berlin Heidelberg New York London
Paris Tokyo

	Thema des Monats	This Month's Topic	
	Die kindlichen Hypoglykämien	Hypoglycemia in Childhood	591
U. Wendel	Diagnostisches Vorgehen bei kindlichen Hypoglykämien	Diagnostic Procedure in Hypoglycemic Syndromes	592
K. Baerlocher	Hypoglykämien im Kindesalter. Pathophysiologische Überlegungen und Beispiele von Hypoglykämien bei hereditären Störungen des Kohlenhydratstoffwechsels	Hypoglycemia in Childhood: Pathophysiologic Considerations and Examples of Hypoglycemia Due to Inborn Errors of Carbohydrate Metabolism	597
H. Przyrembel	Stoffwechseldefekte mit hypoketotischer Hypoglykämie	Metabolic Defects with Hypoketotic Hypoglycemia	606
B. Biggemann	Endokrin bedingte Hypoglykämieformen	Hypoglycemia Due to Endocrine Disorders	612
	Pädiatrie aktuell	Trends in Paediatrics	616
	Was hat das Kind? Trainingsprogramm für die Weiterbildung zum Kinderarzt	What's Wrong with the Child? Program for Continuing Education of Paediatricians	617
	Aus Klinik und Forschung Originalien	Clinic and Research Originals	
R. Hümmelink, W. G. Sippell	Klinische Wertigkeit des GHRH-Tests in der Minderwuchsdiagnostik	Clinical Value of GHRH-Tests in the Diagnosis of Growth Hormone Deficiency	618
K. Heyne, F. K. Tegtmeier	Postinfektiöse Thrombozytose als Akute Phase-Reaktion: das Beispiel Haemophilus influenzae-Meningitis	Postinfectious Thrombocytosis as an Acute Phase Reaction: the Example of Haemophilus influenzae Meningitis	622
B. Gottschalk, H. G. Wiesemann, U. Stephan	Vergleich von zwei Pankreasenzym-Präparaten zur Behandlung der Verdauungsinsuffizienz bei Mukoviszidose (zystische Fibrose)	Comparison of Two Pancreatic Enzyme Products for the Treatment of Maldigestion in Cystic Fibrosis (Mucoviscidosis)	626
M. Kratky-Dunitz, P. J. Scheer	Psychosomatische Aspekte der Enkopresis	Psychosomatic Aspects of Encopresis	630
Ch. Vogtmann, G. Grubbe, K. E. Ruckhäberle, H. Böttcher, Ch. Ockert	Auswirkungen einer Frühtherapie mit Indomethazin auf die Manifestation eines persistierenden Ductus arteriosus bei extrem untergewichtigen Frühgeborenen	The Effects of an Early Indomethacin Treatment on the Manifestation of a Patent Ductus arteriosus in Very Low Birth Weight Infants	636
	Der interessante Fall	Interesting Cases	
H. Müller, P. Greiner, R. Salm, W. Wenz, L. Fiedler	Posthepatischer Ikterus durch Fehlbildungen des pankreatiko-biliären Gangsystems im Kleinkindesalter	Posthepatic Cholestasis Due to Anomalies of the Pancreatico-Biliary Tract in the Young Child	640
D. Körholz, W. Nürnberger, U. Göbel, V. Wahn	Gold-induzierter systemischer Lupus erythematosus	Gold-Induced Systemic Lupus erythematosus	644
	Briefe an die Redaktion — Diskussionen	Letters to the Editor	
G. S Reusz, T. Tulassay, M. Miltényi	Zur Arbeit „Exakte Beschreibung nicht-glomerulärer und glomerulärer Erythrozytenformen bei kindlicher Hämaturie“ von F. Hildebrandt et al. Monatsschr Kinderheilkd 136:10-16	Comment on „Non-Glomerular and Glomerular Erythrocytes in the Urinary Sediment of Children with Hematuria“ by F. Hildebrandt et al. Monatsschr Kinderheilkd 136:10-16	647
P. Eggert	Bemerkungen zur selben Arbeit	Comment on the Same Paper	647
F. Hildebrandt	Stellungnahme zu vorstehenden Bemerkungen	Remarks on the Comment by P. Eggert	648
	Auflösung und Kommentar des Trainingsprogramms für die Weiterbildung zum Kinderarzt	Solution and Commentary in the Program for Continuing Education of Paediatricians	635
	Neue Bücher	New Books	648
	Tagesgeschichte, Personalia	News of the Day, Personal News	650
	Tagungskalender	Forthcoming Meetings	650
	Für die Dokumentation	Documentation	A 46

Indexed in Current Contents

Monatsschr Kinderheilkd (1988) 136, 9

Annual subscription: DM 298,- plus postage



**Think
about
it**

You make a clinical diagnosis. Do you ever consider the thought processes by which you arrived at it? Medical students and practitioners are often concerned with examples of diagnostic logic, but seldom consider them in the context of a general philosophy. Is diagnostic logic out on a limb, or is it based on the same principles as logic in general?

In *Logic in Medicine* doctors and philosophers combine to provide a coherent system of diagnostic logic with a broader view of the science and art of reasoning.

LOGIC IN MEDICINE

Price: Inland £5.95; Abroad £7.50; USA \$11.50
BMA members: Inland £5.45; Abroad £7.00; USA \$10.50
(including postage, by air abroad)

Payment must be enclosed with order.

ORDER YOUR COPY NOW FROM
British Medical Journal, PO Box 295, London WC1H 9TE
or any leading medical bookseller



Royal Postgraduate Medical School

(University of London)

Respiratory illness in pre-school children

20-22 February 1989

Do you deal with chesty children?
Are you a paediatrician, general practitioner,
community doctor, physiotherapist or
specialist nurse?

THIS COURSE IS FOR YOU!

The course will cover new aspects of the following topics:

- * infection and immunity
- * sudden infant death
- * wheezing disorders—usual and unusual
- * perinatal illness and its outcome
- * apnoea—a practical approach
- * gastro-oesophageal reflux
- * respiratory failure and ITU
- * cystic fibrosis in infants
- * epidemiology versus physiology
- * prevention

Course organiser
Course fee

Dr Michael Silverman
£150

Further details from:

Wolfson Conference Centre
Royal Postgraduate Medical School
Hammersmith Hospital
Du Cane Road
London W12 0NN

Telephone:

01 740 3117



This publication is available in microform.

University Microfilms

International reproduces this
publication in microform:
microfiche and 16mm or
35mm film. For information
about this publication or any
of the more than 13,000 titles

we offer, complete and mail the coupon to: University
Microfilms International, 300 N. Zeeb Road, Ann Arbor,
MI 48106. Call us toll-free for an immediate response:
800-521-3044. Or call collect in Michigan, Alaska and
Hawaii: 313-761-4700.

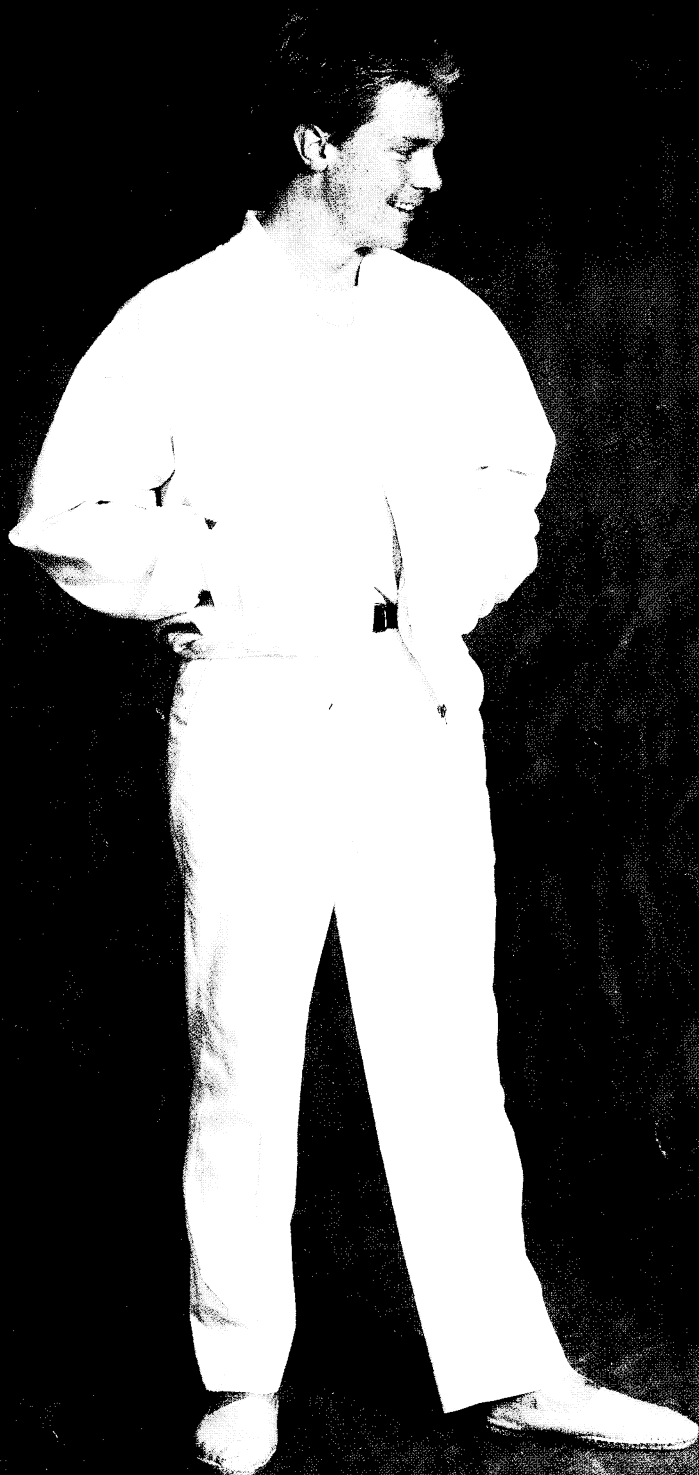
☐ Please send information about these titles:

Name _____
Company/Institution _____
Address _____
City _____
State _____ Zip _____
Phone () _____

**University
Microfilms
International**

**Crescormon
helped him grow**

**Somatonorm
is helping him grow**



NEW

GenotropinTM

somatropin (rbe)

Kabi announce the introduction of the authentic sequence biosynthetic growth hormone, Genotropin (somatropin (rbe)).

GenotropinTM 4IU

**Genotropin
will help him grow
Naturally**



PRESCRIBING INFORMATION

Presentations A vial of sterile lyophilised powder containing 4IU somatropin (rbe) supplied with a 1 ml ampoule of Water for Injections for reconstitution. **Indications** The treatment of short stature caused by decreased or absent secretion of pituitary growth hormone. **Reconstitution** Add 1 ml of Water for Injections to the lyophilised powder in the vial and dissolve gently without shaking vigorously. **Dosage and Administration** Administer by subcutaneous or intramuscular injection. Generally a dose of 0.5 – 0.7 IU/kg body weight per week is recommended divided into six or seven subcutaneous injections. Alternatively two to three intramuscular injections can be given. **Contra-Indications** Only patients with unfused epiphyses should be treated. **Precautions** Patients with diabetes mellitus may require adjustment of their antidiabetic therapy. Patients treated with Genotropin should be regularly assessed by child growth specialists. If given subcutaneously, the injection site should be varied to prevent lipatrophy. **Pregnancy and Lactation** In the event of pregnancy occurring during Genotropin therapy, treatment should be discontinued. No information is available as to whether peptide hormones pass into breast milk. **Side-Effects** A few children developed transient local skin reactions during clinical trials. Some patients develop antibodies to growth hormone although the frequency with Genotropin has been low in clinical trials. **Pharmaceutical Precautions** Store between 2 – 8°C and protect from light. Genotropin 4IU is for single dose use only. Reconstituted Genotropin 4IU may be stored for up to 24 hours in the refrigerator before use. **Legal Category** POM **Package Quantities** Combined pack containing one vial of somatropin (rbe) 4IU and one vial of Water for Injections or ten vials of somatropin (rbe) 4IU and ten vials of Water for Injections. **Product Licence Numbers** Genotropin 4IU PL 0022/0071 Water for Injections PL 0022/0082 **Product Authorisation Number** PA 187/32/1 **Price NHS Price** Genotropin 4IU £30.50 Genotropin 10x 4IU £305.00 **Product Licence and Product Authorisation Holders** KabiVitrum Ltd. KabiVitrum House, Riverside Way, Uxbridge, Middlesex. UB8 2YF. KabiVitrum, Cahill May Roberts Ltd, P.O. Box 1090 Chapelizod, Dublin 20. Further information is available on request from the Product Licence holder.

KABI

PRESCRIBING INFORMATION

HUMAN VELOSULIN (Neutral Insulin Injection, human insulin (emp)). **HUMAN INSULATARD** (Isophane Insulin Injection (NPH), human insulin (emp)). **HUMAN MIXTARD** 30/70 (Neutral Suspension comprising 30% Neutral Insulin Injection and 70% Isophane Insulin Injection (NPH), human insulin (emp)). **HUMAN INITARD** 50/50 (Neutral Suspension comprising 50% Neutral Insulin Injection and 50% Isophane Insulin Injection (NPH), human insulin (emp)). **Presentation** HUMAN VELOSULIN, HUMAN INSULATARD, HUMAN MIXTARD 30/70 and HUMAN INITARD 50/50 are available in 10 ml. vials containing 100 i.u./ml. To aid identification the metal sealing rings of the vials have tactile marks as follows: Human Velosulin – one mark; Human Insulatard – two marks; Human Mixtard 30/70 – three marks; Human Initard 50/50 – four marks. The vials are fitted with tamper-evident caps. **Uses** The treatment of insulin-requiring diabetes. **Dosage and Administration** The dosage of insulin is determined by the physician according to the needs of the patient. Human Velosulin may be given by s.c., i.m., or i.v. injection. Human Insulatard, Human Mixtard 30/70 and Human Initard 50/50 should be re-suspended by inverting the vial several times before being given by s.c. or i.m. injection (they must not be given intravenously). Intermixing does not affect the characteristics of any of these insulins. **Use in pregnancy:** Insulin requirements usually fall during the first trimester and increase during the second and third trimesters. **Use in the elderly:** Insulin may have a more prolonged action due to reduced clearance rates. **Contra-indications warnings etc. Contra-indications:** Hypoglycaemia. **Precautions:** Patients transferring from other insulins may require a dosage adjustment. Concomitant therapy with thyroxine, corticosteroids, oral contraceptives, diuretics, beta blockers and M.A.O.I.s may affect insulin requirements. **Side and Adverse Effects:** Hypoglycaemia. Local reactions, lipodystrophy and hypersensitivity reactions are rarely reported with human insulins. **Pharmaceutical Precautions** be used. **Legal Category P. Package Quantities** 10 ml. glass vials. **Basic NHS Price** Human Insulatard 3132/0034; Human Mixtard 30/70 3132/0037; Human Initard 50/50 Insulatard 0003/0212; Human Mixtard 30/70 0003/0213; Human Initard 50/50 0003/0214. House, Garland Court, Garland Road, East Grinstead, West Sussex RH19 1DN. Foundation Ltd, Crewe Hall, Crewe, Cheshire CW1 1UB. Tel: Crewe (0270) 583151.



Store between 2–8°C, protected from sunlight. Insulin which has been frozen should not be used. **Product Licence Numbers** NORDISK-UK: Human Velosulin 3132/0031; 3132/0040. THE WELLCOME FOUNDATION LTD: Human Velosulin 0003/0211; Human Insulatard 0003/0212; Human Mixtard 30/70 0003/0213; Human Initard 50/50 0003/0214. Further information is available on request from either: Nordisk-UK, Nordisk Tel: East Grinstead (0342) 410373, or Wellcome Medical Division, The Wellcome Foundation Ltd, Beckenham, Kent BR6 3YH. **Reference** I. Heine R.J. et al, Diabetologia, 1984; 27; 558-562. *Registered Trade Mark



HUMAN VELOSULIN®

Human neutral soluble insulin (emp)

HUMAN INSULATARD®

Human isophane (NPH) insulin (emp)

Quick and intermediate acting insulins developed to be compatible.

No interaction when mixed.†

Predictable effect in individually titrated regimens.

The latest Keynes Press publication marks the ninetieth anniversary of a major breakthrough in tropical medicine

This day designing God
Hath put into my hand
A wondrous thing. And God
Be praised. At His command,

I have found thy secret deeds
Oh million-murdering Death.

I know that this little thing
A million men will save—
Oh death where is thy sting?
Thy victory oh grave?

Not many scientists are moved to verse by the fruits of their research, but few results are as momentous as the one celebrated by Ronald Ross in *The Great Malaria Problem and its Solution*. Adapted from Ross's memoirs, this Keynes Press edition gives the full story of Ross's discovery of the mode of transmission of malaria by the *Anopheles* mosquito. Engagingly written, it is the frank and accurate picture of four years' painstaking work, full of hope, despair, elation, frustration, and what Ross describes as the "sacred passion for discovery." It also shows the close and moving scientific partnership between Ross and Patrick Manson, the "father of tropical medicine", as evidenced in the 155 letters exchanged between them over this period.

Fully illustrated, and with an introduction by L. J. Bruce-Chwatt, emeritus professor of tropical public health at the University of London, this unique volume provides a fascinating insight into the process of scientific research as well as a self portrait of one of the most impressive and colourful individuals in the history of tropical medicine.

Order from:
British Medical Journal (Keynes Press)
PO Box 295, London WC1H 9TE

PLATE VII

Moustiques à Malaria

*Donner aux Écoles pour offrande de
Jahit.*



(From a Mauritian Newspaper, 1908.)

THE KEYNES PRESS



The Keynes Press
Limited editions of medical classics,
handsomely printed and bound.

Price: Inland £45.00; Abroad £52.00;
USA \$73.00, including postage.

Autobiographical

The BMJ's new series
of books of general
interest by medical
writers

The MEMOIR Club



The second book in the series, published in November 1987, is *Recollections and Reflections* by Douglas Black. His recollections are of his remarkable career, in which he has been professor of medicine at Manchester university, chief scientist at the DHSS, president of the Royal College of Physicians, and the occupant of important posts when officially "retired". His reflections are on the practice and progress of medicine, university teaching and administration, public service, and life in general. Absorbing and provocative, the book bears its author's hallmarks of insight, scholarly precision, and dry wit.

Price: Inland £14.95; Abroad £17.50; USA\$29.00
BMA members: Inland £14.45; Abroad £16.50; USA\$27.00
including postage, by air abroad
Please enclose payment with order

ORDER FROM: British Medical Journal, PO Box 295, London WC1H 9TE,
or any leading bookseller.

Cynical

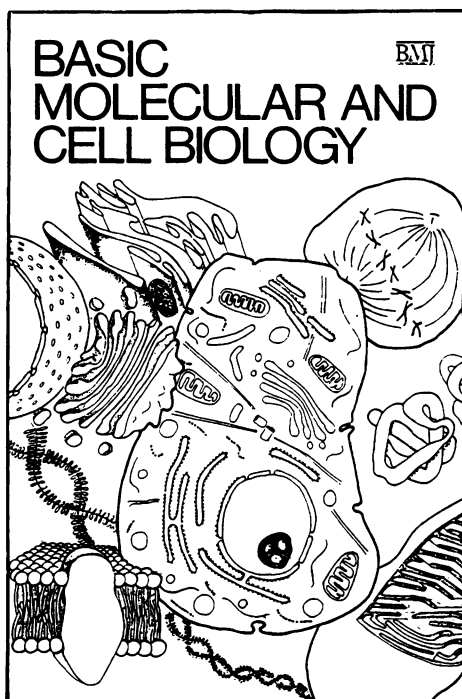
Historical

Polemical

Whimsical

Philosophical

One revolution leads to another . . .



The extraordinary technical developments in molecular biology over the past few years, and the equally rapid advances in understanding of cell biology, will almost certainly result in far reaching changes in medical research and practice. In this collection of articles experts in molecular and cell biology provide the background information to give clinicians an insight into the way in which the medical sciences may be moving over the next few years and into the exciting possibilities opening up for the treatment of genetic disorders, cancer, and the common illnesses of Western society such as degenerative vascular disease and diabetes.

Price: Inland £5.95; Abroad £7.50; USA \$12.00

BMA members: Inland £5.45; Abroad £7.00; USA \$11.00

including postage, by air abroad

Payment must be enclosed with order.

Order from BRITISH MEDICAL JOURNAL, PO Box 295, London WC1H 9TE
or any leading medical bookseller

Indications

Epilepsy (generalised tonic-clonic and partial seizures).

Dosage in epilepsy

Use a gradually increasing dosage scheme, adjusting to the patient's needs. Adults: 100–200mg once or twice daily, increasing slowly up to 800–1200mg daily; in some cases 1600mg daily may be necessary. Children: up to 1 year old, 100–200mg daily; aged 1–5 years, 200–400mg daily; aged 5–10

years, 400–600mg daily; aged 10–15 years, 600–1000mg daily. It may be helpful to monitor drug levels: the optimum therapeutic range is 3–10µg/ml (13–42µmol/l).

Side-effects

Dizziness and diplopia (usually dose dependent), less frequently dry mouth, diarrhoea, nausea, vomiting. Generalised erythematous rash, disappearing on cessation of therapy.

Isolated reports of oedema, hyponatraemia, exfoliative dermatitis, leucopenia, thrombocytopenia, agranulocytosis, aplastic anaemia, cholestatic jaundice and acute renal failure. Blood count should be checked in early stages of treatment.

Precautions

Caution in patients taking oral anticoagulants or requiring oral contraception. In

pregnancy, potential benefits of Tegretol must be weighed against potential hazards. Do not administer with, or within two weeks of cessation of, MAOI therapy. Macrolide antibiotics (e.g. erythromycin) and isoniazid may elevate carbamazepine levels. In rats treated with carbamazepine for two years, incidence of liver tumours increased (no evidence of significant

bearing on the therapeutic use of the drug). Serum folic acid levels should be observed during anticonvulsant therapy.

Contra-indications

Previous drug sensitivity to Tegretol. Do not administer to patient with atrioventricular conduction abnormalities unless paced.

Packs

Tablets of 100mg (PL0001/5027) basic NHS price

£3.10 per 100, £14.93 per 500; tablets of 200mg (PL0001/5028) £5.76 per 100, £27.75 per 500; tablets of 400mg (PL0001/0088) £11.32 per 100; liquid 100mg/5ml (PL0001/0050) £5.53 per 300ml bottle. ® denotes registered trade mark. Full prescribing information is available from Geigy Pharmaceuticals, Horsham, West Sussex.



TEGRETOL®

carbamazepine BP

After seizure control there's a lot of living to do

Geigy