



**Prescribing Note**

**Indications:** Lioresal is indicated for the relief of spasticity in multiple sclerosis, other spinal lesions, and also for the treatment of spasticity of cerebral origin in children and young adults (under 25 years of age). Dosage: It is advisable to commence treatment with Lioresal at a daily dosage of 15mg, taken in three divided doses, increasing slowly at intervals of at least 3 days, until the optimum effect is achieved. Satisfactory control is usually obtained with doses up to 60mg daily, but careful adjustment is often necessary to meet the requirements of individual patients. A maximum daily dose of more than 100mg is not advised unless the patient is in hospital and under careful supervision. There have been no reports of tolerance. Side effects: Nausea, vomiting, daytime sedation and drowsiness, muscle hypotonia and fatigue, headache. History of peptic ulceration, severe psychiatric disturbances, concurrent administration of sedatives, anticholinergics, antihypertensive drugs, barbiturates, alcohol, or other CNS depressants. Precautions: First three months of pregnancy. **Price:** Lioresal is supplied as 10mg tablets of baclofen in Securiterne packs of 100. **Trade Name:** Lioresal.

© 1984 Parke-Davis

## PEDIATRICIAN

La Rabida Children's Hospital and Research Center, affiliated with The University of Chicago, seeks a Board-certified pediatrician, preferably with a fellowship in ambulatory pediatrics or experience/interest in children with chronic diseases. Responsibilities include inpatient and outpatient services in a specialized chronic care pediatric hospital of 73 beds with approximately 8,300 outpatient visits annually. An academic appointment of appropriate rank will be made in the Department of Pediatrics of The University of Chicago, an equal opportunity employer. Inquiries and CV should be directed to:

**Search Committee, La Rabida Children's Hospital and Research Center, 65th Street at Lake Michigan, Chicago, IL 60649.**

## Drugs and Disease

The Proceedings of a Symposium  
organised by the  
Royal College of Pathologists

Edited by  
Sheila Worlledge

Price : Inland £3.00  
Abroad US \$7.50  
*including postage*

The Publishing Manager, JOURNAL OF  
CLINICAL PATHOLOGY, BMA House,  
Tavistock Square, London WC1H 9JR

## Diseases of Connective Tissue

*The Proceedings of a Symposium organised by  
The Royal College of Pathologists*

**Edited by D. L. Gardner**

**The cells**—Fibroblasts ● Chondrocytes ● Synoviocytes ● The muscle cell ● **Extracellular materials**—Collagens ● Collagen and elastin fibres ● Basement membrane ● Proteoglycans of cartilage ● **Disease mechanisms**—Diseases of the collagen molecule ● Molecular abnormalities of collagen ● Lysosomes and the connective-tissue diseases ● **Genetic disease**—HLA system and rheumatic disease ● Replacement therapy in the mucopolysaccharidoses ● Genetic disease and amyloid ● **Inflammation and fibrosis**—Rheumatoid arthritis—a virus disease? ● Systemic lupus erythematosus—an autoimmune disease? ● Hepatic cirrhosis—a collagen formative disease? ● Fibrosis of lung—an environmental disease? ● **Kettle Memorial Lecture**—Atherosclerosis—disease of old age or infancy? ● **Structural and metabolic disease**—New knowledge of connective tissue ageing ● New knowledge of osteoarthritis ● New knowledge of intervertebral disc disease ● New knowledge of the pathogenesis of gout ● New knowledge of chondrocalcinosis ● **A consensus**—Connective tissue diseases: A consensus.

**Price: Inland £6.00; Abroad US\$15.00, including postage**

Payment must be enclosed with order or a surcharge of 50p will be made for rendering invoices and statements

The Publisher, *Journal of Clinical Pathology*, B.M.A. House, Tavistock Square,  
London WC1H 9JR

# European Journal of Pediatrics

Volume 134 Number 2 August 1980

## The Pioneers of Pediatric Medicine 93

### Annotation

**W. Schröter:** Glycosylated Hemoglobins and Diabetes Mellitus 95

### Original Investigations

**S. Nagayoshi, H. Yamaguchi, T. Ichikawa, M. Miyazu, T. Morishima, T. Ozaki, S. Isomura, S. Suzuki, M. Hoshino:** Changes of the Rotavirus Concentration in Faeces During the Course of Acute Gastroenteritis as Determined by the Immune Adherence Hemagglutination Test 99

**W. M. Teller, B. Raue, S. B. Pal:** Urinary Excretion of  $\Delta^8$ -Pregnenetriol (5-Pregnene-3 $\beta$ ,17 $\alpha$ -20-triol) in Healthy Children 103

**C. Bachmann, J. P. Colombo:** Diagnostic Value of Orotic Acid Excretion in Heritable Disorders of the Urea Cycle and in Hyperammonemia due to Organic Acidurias 109

**U. Langenbeck, Abdolwahab Behbehani, A. Mench-Hoinowski, M. Petersen:** Absence of a Significant Renal Threshold for Two Aromatic Acids in Phenylketonuric Children Over Two Years of Age 115

**T. Meloni, S. Erre, D. Gallisai, S. Cutillo:**  $\beta$ -Thalassemia Trait and Hyperbilirubinemia in G-6-PD Deficient Newborn Infants 119

**S. Okahata, Y. Nishi, S. Hatano, Y. Kobayashi, T. Usui:** Changes in Erythrocyte Superoxide Dismutase in a Patient with Copper Deficiency 121

**D. Bratlid, P. J. Moe:** Hemoglobin and Serum Ferritin Levels in Mothers and Infants at Birth 125

**M. Hallmann, K. Kankaanpää:** Evidence of Surfactant Deficiency in Persistence of the Fetal Circulation 129

**W. Muntean, W. Petek:** Lupus Anticoagulant After Measles 135

**H. J. Bruyere Jr., C. Viseskul, J. M. Opitz, L. O. Langer Jr., S. Ishikawa, E. F. Gilbert:** A Fetus with

Upper Limb Amelia, "Caudal Regression" and Dandy-Walker Defect with an Insulin-Dependent Diabetic Mother 139

**Ch. Bosch, M. Becker, H. W. Rotthauwe, W. Opferkuch:** Complement Studies in Children with Treated Coeliac Disease After Gluten Challenge 145

**B. Koehler:** Benign Paroxysmal Vertigo of Childhood: A Migraine Equivalent 149

### Short Communications

**M. Gabriel, U. Helmin, M. Albani:** Sleep Induced PO<sub>2</sub>-Changes in Preterm Infants 153

**A. A. Roscher, A. Thetter, U. N. Wiesmann, F. Vassella:** Elevated CSF Cyclic AMP Concentrations in Patients with Inflammatory Diseases of Cerebral and Extracerebral Origin 155

**M. Le Lous, M.-C. Hors-Cayla, G. F. M. Hendrickx, P. Maroteaux:** Normal Lipid Composition of Fibroblasts from a Case of Type II Achondrogenesis 159

### Case Reports

**R. C. A. Sengers, A. M. Stadhouders, H. H. J. Jaspar, K. J. B. Lamers, J. M. F. Trijbels, S. L. H. Notermans:** Muscle Phosphorylase Deficiency in Childhood 161

**N. Böhm, G. Krebs:** Solitary Rhabdomyoma of the Heart. Clinically Silent Case with Sudden, Unexpected Death in an 11-Month-Old Boy 167

**D. Lindhout, P. G. Barth, J. Valk, T. N. Boen-Tan:** The Joubert Syndrome Associated with Bilateral Choriorretinal Coloboma 173

**A. Hanukoglu, D. Fried, A. Gotlieb:** Dyphenylhydantoin Induced Hypersensitivity Reaction with an Unusual Pupuric Skin Lesion 177

Announcements 180

Indexed in Current Contents

**Subscription Information:** Volumes 133 and 134 (3 issues each) will appear in 1980. Information about obtaining back volumes and microform editions available upon request.

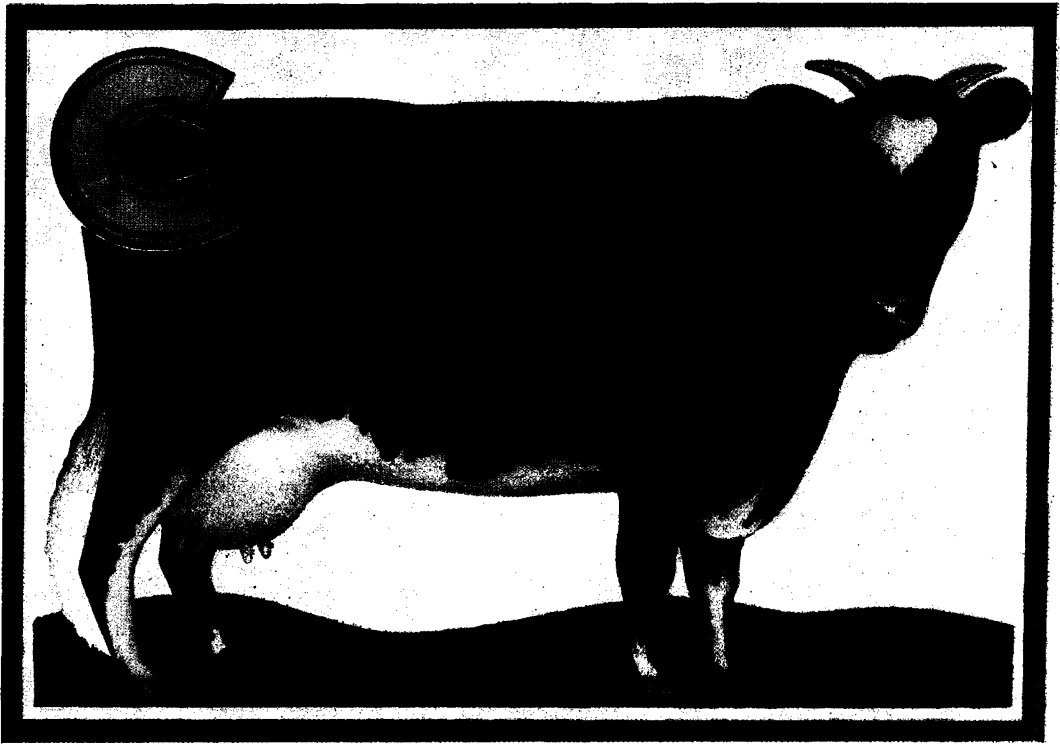
**North America:** Subscription rate: \$ 317.00, including postage and handling. Subscriptions are entered with prepayment only. Orders should be addressed to: Springer-Verlag New York Inc., Journal Sales Department, 44 Hartz Way Secaucus, NJ, 07094, USA. Tel. (2 01) 3 48-40 33. Telex 0023125 994

**Japan:** Subscription rate: DM 588.— including postage (surface airmail lifted) and handling. Orders can either be placed with your bookseller or sent directly to: Springer-Verlag KG, Heidelberger Platz 3, D-1000 Berlin 33, Tel. (0 30) 82 07-1, Telex 01-83 319.

**All Other Countries:** Subscription rate: DM 556.—, plus postage and handling. Orders can either be placed with your bookseller or sent directly to: Springer-Verlag KG, Heidelberger Platz 3, D-1000 Berlin 33, Tel. (0 30) 82 07-1.



Springer International



## C IS FOR COWS MILK INTOLERANCE?

It has long been recognised that cow's milk intolerance in infants may be responsible for failure to thrive, characterised by a number of symptoms, including diarrhoea, colic, eczema, asthma, wheezing and many more.

This variety of symptoms makes the diagnosis difficult and estimates of the incidence of cow's milk intolerance range between 0.3% and 7.5% of infants, which means that up to 1 in 13 may be affected.

But one thing is certain, the logical treatment requires the complete avoidance of cow's milk: In young infants who are not entirely breast fed, and in older babies and children after weaning, this presents a difficult problem. In the past, there has been no nutritionally suitable, economical and convenient alternative to milk feeds.

But now Wyeth, the makers of S-M-A, have introduced Wysoy.\*

Wysoy is an infant formula, which is prepared from soy bean protein isolate, and is devoid of milk proteins and of lactose. Yet it still provides complete and balanced nutrition for infants, without the need for supplements. It may

also be used in place of cow's milk for older babies and children.

It is available in ready-to-feed form for hospitals and, for the home, in easily reconstituted powder form.

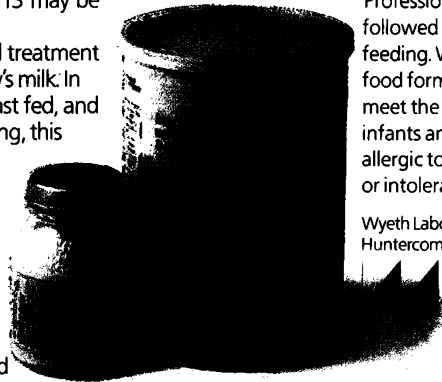
### MILK-FREE FORMULA FOR INFANTS AND CHILDREN

Wysoy is a formula of high nutritional value for infants and children with special feeding needs.

Professional advice should be followed on matters of infant feeding. Wysoy milk-free food formula is intended to meet the nutritional needs of infants and children who are allergic to cow's milk proteins or intolerant to lactose.

Wyeth Laboratories,  
Huntercombe Lane South,  
Taplow,  
Maidenhead,  
Berkshire.

\* Trade Marks



**Milk-free nutrition for infants and children from the makers of S-M-A\***

# New to the UK NENATAL

## the special formula for low birth-weight babies

New to the UK, NENATAL is the first product to be specifically formulated to meet the rapid growth requirements of small-for-dates and premature babies. As such, it offers a more appropriate nutritional profile than pooled breast milk or full-term formula feeds.

Please send for:  
"Nenatal and the Nutritional Needs of the Low birth-weight Infant"  
—an important review of current concepts including an  
extensive reference section.



ROUSSEL  NUTRITIONAL DIVISION

Roussel Laboratories Limited,  
Roussel House, Wembley Park,  
Middlesex HA9 0NF

# When efficacy is the need and safety the concern

No need now to sacrifice efficacy for safety because Eumovate fulfils the need for a corticosteroid preparation with greater topical activity than hydrocortisone, yet with a wide margin of safety.

# Eumovate

(clobetasone butyrate)  
a unique balance of efficacy and safety

**Indicating information**  
Eumovate is suitable for treating the milder forms of eczema, seborrhoeic dermatitis and other steroid responsive skin conditions.

**Dosage and administration**  
Apply up to four times a day until improvement occurs, when the frequency of application may be reduced.

**Contra-indications**  
Bacterial, fungal or viral diseases of the skin.

**Precautions**  
In infants and children, long term, continuous topical corticosteroid therapy should be avoided where possible, as adrenal suppression can occur. In infants, the nappin may act as an occlusive dressing, and increase absorption. Appropriate antimicrobial therapy should be used concurrently whenever treating inflammatory lesions which have become infected.

Any spread of infection requires withdrawal of topical corticosteroid therapy and, possibly, commencement of systemic chemotherapy.

As with all corticosteroids, prolonged application to the face is undesirable. Topical steroids should not be used extensively in pregnancy, i.e. in large amounts or for prolonged periods.

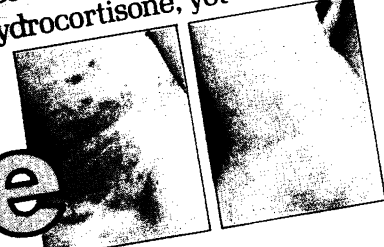
**Side effects**  
In the unlikely event of signs of hypersensitivity appearing, application should stop immediately. If large areas were to be treated, some patients may absorb sufficient steroid to cause adrenal depression despite the low dose of systemic activity associated with clobetasone butyrate.

Local atrophic changes could occur if moisture increases absorption of steroid but only after prolonged use.

**Basic NHS cost** (exclusive of VAT)  
25 gram tube £1.63 (also available 100 gram tubes).

**Product Licence numbers**  
Cream: 4/0233  
Ointment: 4/0254

**Glaxo**  
leaders in topical steroids  
Further information on Eumovate (mark) is available from:  
Glaxo Laboratories Limited  
Greenford, Middlesex UB6



# Monatsschrift für Kinder— heilkunde

Organ der Deutschen Gesellschaft für Kinderheilkunde

128. Band · Heft 7 · Juli 1980

#### H. Ewerbeck

Paramedizin und ärztliche Außenseitermethoden:  
Ein Problem auch in der Kinderheilkunde? 445

#### Übersichten

#### O. Prokop

Paramedizin  
[Paramedicine] 446

#### I. Oepen

Über Zelltherapie und Zelltherapeuten  
[On Cytotherapy and Cytotherapeutists] 453

#### W. Wimmer

Ärztliche Außenseitermethoden in juristischer Sicht  
[Methods of Medical Outsiders from the Lawyer's  
Point of View] 459

#### H. J. Bachmann, H. J. Rumpelt, W. Thoenes,

H. Olbing, K. Pistor, H. von Voss  
Klinische und pathologisch-anatomische Befunde bei  
verschiedenen Formen des angeborenen nephrotischen  
Syndroms  
[Clinico-Pathological Data in Infants with Different  
Types of Nephrotic Syndrome] 465

#### Originalien

#### W. Dick, O.-H. Braun, W. Nagel, L. Theilmann

Diagnostische Bedeutung der Lactat- und Lysozym-  
bestimmung im Liquor cerebrospinalis bei Kindern mit  
Meningitis  
[Diagnostic Significance of Lactate and Lysozyme  
Concentrations in Cerebrospinal Fluids in Children with  
Meningitis] 472

#### A. Neraal

Das Asthma bronchiale aus familiendynamischer Sicht,  
dargestellt an einem exemplarischen Fall  
[Bronchial Asthma in a Female Child of 3½: The Role  
of Family Dynamics] 476

#### I. Lagenstein

Verlaufswandel von Petit Mal-Epilepsien. Eine klinische  
und elektroenzephalographische Verlaufsstudie an 331  
Patienten mit Petit Mal-Epilepsien  
[Changes in Presentation During the Course of Petit Mal  
Epilepsy. Long Term Study of Clinical Courses and Elec-  
troencephalographic Patterns in 331 Patients] 480

#### M. Höllwarth, G. Breisach

Beitrag zur konservativen Behandlung von Milz-  
verletzungen  
[Conservative Treatment of Traumatic Splenic Rupture  
in Childhood] 487

#### A. Berg, J. Keul, G. Huber

Biochemische Akutveränderungen bei Ausdauer-  
belastungen im Kindes- und Jugendalter  
[Biochemical Changes After Endurance Exercise in Chil-  
dren and Juveniles] 490

#### C. Zink, J. Karsten, J. v. Törne, A. Zink, J. Korporal

Epidemiologische und sozialpsychologische Aspekte von  
Unfällen im Kindesalter  
[Epidemiological and Socio-Psychological Aspects of  
Accidents in Childhood] 496

#### U. M. Klemen, H. Freyler, E. Schober, H. Frisch

Fluoreszenzangiographischer Nachweis retinaler Gefäß-  
veränderungen bei kindlichen Diabetikern  
[Diagnosis of Retinal Vascular Changes in Diabetic Chil-  
dren by Means of Fluorescein-Angiography] 502

#### Laudatio

Professor Dr. Walter Marget 60 Jahre 506

#### Buchbesprechungen 506

#### Tagesgeschichte 508

Annual subscription: DM 188,- plus postage



Indexed in Current Contents

Springer-Verlag Berlin Heidelberg New York

Monatsschr. Kinderheilkd. ISSN 0026-9298 MOKIAY 128 (7) 445-508 (1980)

# THE FIRST YEAR OF LIFE

Recent research has vastly improved our understanding of a child's development in the first year of life.

In particular, assessment of normal progress is now much more systematic, so that deviations from the normal are recognised earlier.

Dr. Bernard Valman's illustrated account of current methods of examination, assessment and management of the medical problems of early infancy will prove invaluable to all concerned with small babies.

The articles have now been collected into book form in exactly the same format as they appeared in the BMJ.

Price: Inland £5.00;

Overseas US\$12.50

(Inland £4.50;

Overseas US\$11.25 for BMA members.

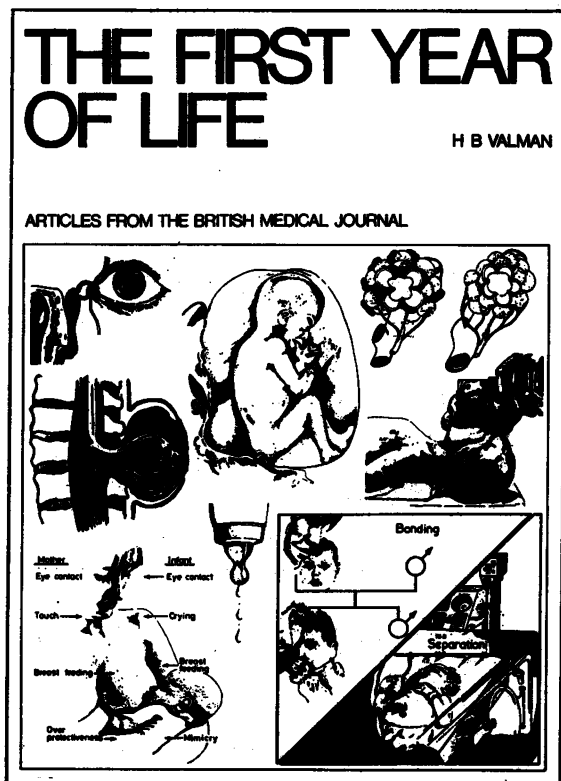
When ordering BMA members must quote their membership number or the full price will be applicable.)

Payment must be enclosed with order or a surcharge of 50p will be made for rendering invoices and statements.

**Order your copy now**

From: The Publisher,  
British Medical Journal  
BMA House, Tavistock Square,  
London WC1H 9JR

or any leading bookseller.





# *Reduced Subscription Rates for Junior Hospital Doctors Residents and Interns...*

## **Annals of the Rheumatic Diseases**

**is available to junior hospital doctors in all parts of the world for a maximum of four consecutive years at REDUCED Annual Subscription Rates. (Thereafter, or when reaching consultant status this special offer will no longer apply.) The following reduced rates are unchanged for the six issues published in 1980.**

**Inland £13.00**

**Overseas US\$30.00**

*(The full rates are: Inland £23.00; Overseas US\$55.00)*

*The opportunity to subscribe to this journal of international authority and repute at a substantially reduced subscription rate is one not to be missed by junior doctors seeking to specialise in rheumatology.*

*Please complete the adjacent order form and send for your subscription NOW.*

*Further order forms can be supplied on request.*

### **ORDER FORM**

BMA Publications  
BMA House, Tavistock Square  
London WC1H 9JR, England

*Please enter my subscription to  
ANNALS OF THE  
RHEUMATIC DISEASES*

- United Kingdom and  
Irish Republic £13.00
- Overseas US\$30.00
- My remittance for.....  
is enclosed

*(Please tick appropriate boxes)*

NAME.....

.....

ADDRESS .....

.....

.....

---

**To be completed by Consultant**  
*I hereby confirm that the above  
mentioned doctor is a member  
of the junior hospital staff/  
resident/intern at .....*

.....

Signed.....

## **Annals of the Rheumatic Diseases**

---

# PEDIATRIC RESEARCH

Volume 14, No. 10

October 1980

---

## Contents

Science and Scholarship in Pediatrics. Presidential Address, American Pediatric Society, 1979 Annual Meeting, Atlanta, Georgia .....	000
N. KRETCHMER (Bethesda, Maryland)	
Twin Siblings with a Reye's-Like Syndrome Associated with an Abnormal Organic Aciduria, Hypoglycemia, Diarrhea, and Vomiting with Close Similarities to Jamaican Vomiting Sickness .....	111
R. A. CHALMERS, A. M. LARSON, A. WHITELAW, AND P. PURKISS (Harrow, United Kingdom)	Close clinical and biochemical similarities between observed Reye's-like syndrome and Jamaican vomiting sickness in twin infants suggest a similar etiology in these cases.
Patterns of Fetal Lamb Regional Cerebral Blood Flow during and after Prolonged Hypoxia .....	222
S. ASHWAL, J. S. MAJCHER, N. VAIN, AND L. D. LONGO (Loma Linda, California)	Cortical, subcortical, and brainstem blood flow was measured in control and fetal lambs during intrauterine hypoxia.
Ontogeny of Secretory Immunity: Levels of Secretory IgA and Natural Antibodies in Saliva .....	333
G. R. BURGIO, A. LANZAVECCHIA, A. PLEBANI, S. JAYAKAR, AND A. G. UGAZIO (Pavia, Italy)	Levels of stimulated and unstimulated secretory IgA, free secretory component, and antibody titers were assayed in healthy subjects 2 months to 27 years of age.
Racial Differences in Encounter Rates for Otitis Media .....	444
P. J. BUSH AND D. L. RABIN (Washington, D. C.)	This study investigates factors that affect the incidence of otitis media in clinical practice.
The Effect of Chronic Furosemide Administration on Urinary Calcium Excretion and Calcium Balance in Growing Rats .....	555
B. L. WARSHAW, S. K. ANAND, A. KERIAN, AND E. LIEBERMAN (Los Angeles, California)	This study reports that furosemide-treated rats developed increased urinary calcium excretion over a 25-day period with deleterious effects on the calcium balance.
Paradoxical Reduction in Tissue Hydration with Weight Gain in Neonatal Rabbit Pups ..	666
D. M. COULTER AND M. E. AVERY (Boston, Massachusetts)	This study identifies the tissue sources of neonatal body water losses and describes the relationship between these fluid fluxes and fluid intake during the first 72 hr of life.
Propionate Inhibition of Succinate: CoA Ligase (GDP) and the Citric Acid Cycle in Mitochondria .....	666
D. A. STUMPF, J. MCAFFEE, J. K. PARKS, AND L. EGUREN (Denver, Colorado)	This study suggests that propionyl CoA inhibition of succinate: CoA ligase may explain impaired oxidative metabolism produced by propionate and discusses a clinical therapeutic model for this condition.
Continuous Positive Airway Pressure Impairs Renal Function in Newborn Goats .....	777
J. E. FEWELL AND J. B. NORTON (Little Rock, Arkansas and San Francisco, California)	The authors report the effect of continuous positive airway pressure on urine flow, sodium excretion, and glomerular filtration rate in neonatal goats.
Hidden 19S IgM Rheumatoid Factor in Juvenile Rheumatoid Arthritis .....	888
T. L. MOORE, R. W. DORNER, T. D. WEISS, A. R. BALDASARE, J. ZUCKNER (St. Louis Missouri)	The authors report that hidden 19S IgM rheumatoid factor was isolated in 68% of patients with juvenile rheumatoid arthritis and suggests it to be an important predictive marker of disease activity.
The Effect of Penicillin on the Mortality of Splenectomized Mice Exposed to an Aerosol of <i>Streptococcus Pneumoniae</i> Type 3 .....	888
J. D. DICKERMAN, B. CHALMER, AND S. R. HORNER (Burlington Vermont)	The prophylactic effects of procaine penicillin were investigated in splenectomized mice exposed to type 3 <i>S. pneumoniae</i> .