

CHARLES C THOMAS • PUBLISHER

MAJOR PROBLEMS IN CHILDHOOD CANCER edited by **Carl Pochedly**, *Nassau County Medical Center, East Meadow, Long Island, New York*, and **Thomas F. Necheles**, *Tufts Univ. School of Medicine, Boston*. Foreword by **Sydney S. Gellis**. (11 Contributors) Prognostic improvement is predicated on the close cooperation between the primary physician and the hematologist, oncologist, the radiotherapist and the surgeon. This material was selected on the basis of its clinical relevance and its value to the practitioner. '73, 392 pp., 90 il., 16 tables, \$14.75

MENTAL DEVELOPMENT EVALUATION OF THE PEDIATRIC PATIENT by **Lawrence C. Hartlage** and **David G. Lucas**, both of *Indiana Univ. Medical Center, Indianapolis*. This volume has been developed for use as a reference source for quickly assessing a given child's level of mental development in cognitive, perceptual-motor, language and academic areas. The book contains comprehensive screening items which can be used for children from ages two through nine, and provides guidelines for the use of ancillary personnel for much of the screening process. Child psychiatrists, pediatricians, psychologists, educators and others will find this text useful. '73, 92 pp., 36 il., \$6.50

POISONING: Toxicology-Symptoms-Treatment (3rd Ed.) by **Jay M. Arena**, *Duke Univ. Medical Center, Durham, North Carolina*. In this new edition, substantial changes have been made in all sections, and many new items are included for the first time such as tricyclic drugs, methadone, naloxone hydrochloride, drugs and chemicals in breast milk, methyl mercury in fish and humans, polychlorinated biphenyl, pentachlorophenol, isoniazid, animal poisons, a table of signs and symptoms of poisoning and many other additional tables and materials. This book provides the basic information for life-saving measures. '74, 832 pp. (7 x 10), 26 il. (1 in full color), 123 tables, \$39.50

THE HUMAN FETAL AND NEONATAL CIRCULATION: Function and Structure by **S. Zoe Walsh**, *Karolinska Hospital and Institute, Stockholm, Sweden*; **W. W. Meyer**, *Univ. of Mainz, Federal Republic of Germany*; and **John Lind**, *Karolinska Hospital and Institute, Stockholm, Sweden*. Based largely upon anatomic and physiologic studies, this extensively illustrated monograph details the changes that occur at birth. This text will serve well both for teaching purposes and as a reference for obstetricians, pediatricians and all physicians concerned with care and management of newborn infants. '74, 368 pp. (7 x 10), 275 il. (68 in full color), 22 tables, \$15.00

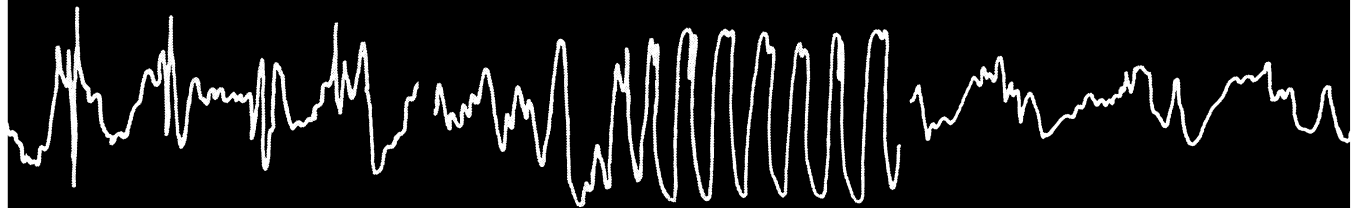
The Teacher's and Doctor's Guide to a Practical Approach to LEARNING PROBLEMS by **Robert N. Pavy** and **Jean V. Metcalfe**. This book is written for the child's teacher and doctor who are usually the first professionals to be aware of and required to deal with the child's learning problems. Presented are questions and answers and the areas to explore in seeking information as to the causes of the problems and their resolutions. This guide will help resolve the child's learning problems. '74, 84 pp., cloth-\$6.95, paper-\$4.25

LEUKEMIA IN CHILDHOOD by **Andre D. Lascari**, *Southern Illinois Univ. School of Medicine, Springfield, Illinois*. Foreword by **Donald Pinkel**. This text is an in-depth clinical presentation which covers all aspects and types of leukemia occurring in childhood including rare and unusual manifestations and complications. Topics discussed include preleukemia, morphologic diagnosis, differential diagnosis, special features, nervous system, infections, unusual forms of leukemia and other areas. Also a lengthy chapter on treatment discusses current forms of therapy for all known forms of leukemia in childhood. '73, 504 pp., 54 il. (6 in full color), \$16.75

Orders with remittance sent by air, postpaid

301-327 East Lawrence Avenue • Springfield • Illinois • 62717 • USA

THERE ARE AROUND 300,000 REASONS FOR CONSIDERING RIVOTRIL IN EPILEPSY



Rivotril is an important new benzodiazepine derivative for the treatment of *all* clinical forms of epileptic disorder. The majority of epileptic patients – there are about 300,000 in the UK – are maintained with several drugs, a considerable number of which exhibit severe side-effects and pose real problems in over-dosage.

That an anticonvulsant drug should be a benzodiazepine with low toxicity,¹ be remarkably free from serious side-effects,^{2,3,4,5} have a rapid onset of action⁶ and be compatible with other anticonvulsants^{3,4} constitutes a major breakthrough.

Rivotril is such a drug.

“The effect of [Rivotril] on grand mal is remarkable . . . in the majority of patients the favourable effect was indisputable.”³

“Clonazepam [Rivotril] is particularly effective in cases of petit mal, and the results of treatment are certainly comparable with those achieved with other currently-used anticonvulsant drugs.”²

1. Arch. Neurol. (Chic), 1972, 27, 205

2. S. Afr. med. J., 1973, 47, 1683

3. Acta neurol. scand., 1973, 49 (Suppl. 53), 91

4. *ibid.*, 82

5. Develop. Med. Child Neurol., 1972, 14, 3

6. Epilepsia (Amst.), 1971, 12, 197



RIVOTRIL

Anticonvulsant

Rivotril is the trade mark for pharmaceutical preparations containing clonazepam

Further information is available on request

Roche Products Limited, 15 Manchester Square, London W1M 6AP

J733000



Wellcome

SEPTRIN contains
trimethoprim
sulphamethoxazole

Full prescription
is available

Wellcome
The Wellcome
Berkley

Sounds right for Septrin

TRADE MARK

b.d. in chest infections

Bacterial chest infections in children demand prompt, vigorous treatment. SEPTRIN Paediatric Suspension has an excellent record of clinical success in children. For fast, decisive action give them SEPTRIN.

SEPTRIN Paediatric Suspension

Monatsschrift für Kinder— heilkunde

Organ der Deutschen Gesellschaft für Kinderheilkunde

122. Band · Heft 10 · Oktober 1974

Originalien

- Á. Görgényi, K. Lapis, Seltene pulmonale Komplikationen bei akut leukämischen Kindern während der hamatologischen Remission (Some Rare Pulmonary Complications in Leukemic Children During Full Haematological Remission) 799
M. Börzsönyi,
T. Machay, D. Schuler
P. Gutjahr, K. Hill, Rhabdomyosarkome im Kindesalter (Rhabdomyosarcoma in Childhood) 805
P. Pippert, S. Hofmann,
M. Neidhardt

Fortbildung und Praxis Übersichten

- A. J. Clapier, Behandlung und Prognose des nephrotischen Syndroms im Kindesalter. Nachuntersuchungsergebnisse bei Patienten aus den Jahren 1930 bis 1970 (Treatment and Prognosis of Nephrotic Syndrome in Childhood — Follow-up Studies of the Years 1930 to 1970) 814
E. Clapier, D. Knorr
F. Bläker, Organisatorische Fragen im Zusammenhang mit der Behandlung der terminalen Niereninsuffizienz im Kindesalter (Problems in the Treatment of Terminal Renal Insufficiency in Childhood) 826
H. H. Hellwege
P. Dannenbaum Erinnerungen an Arvid Wallgren 836

Buchbesprechungen 838

Tagesgeschichte 838

Indexed in Current Contents



Eine spanische Ausgabe dieser Zeitschrift erscheint bei
Editorial Lectura y Estudio, S. A., Barcelona.

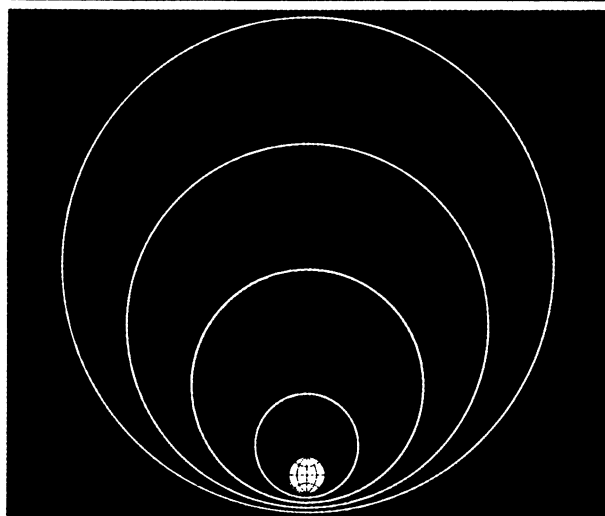
Mscr.
Kinderheilk.

Springer-Verlag Berlin · Heidelberg · New York

MOKIAY 122 (10) 799-838 (1974)

PEDIATRIC RESEARCH

An International Journal of Human Developmental Biology



PUBLISHED MONTHLY BY THE WILLIAMS & WILKINS CO / BALTIMORE, MD. U.S.A.

Each month *PEDIATRIC RESEARCH* brings you a comprehensive selection of informative and significant articles covering the latest in both clinical and experimental findings.

PEDIATRIC RESEARCH is an official publication of the International Pediatric Research Foundation, Inc., and is sponsored by The American Pediatric Society; The European Society for Paediatric Research, and The Society for Pediatric Research.

Published by The Williams & Wilkins Company

Distributed in the United Kingdom by Baillière Tindall

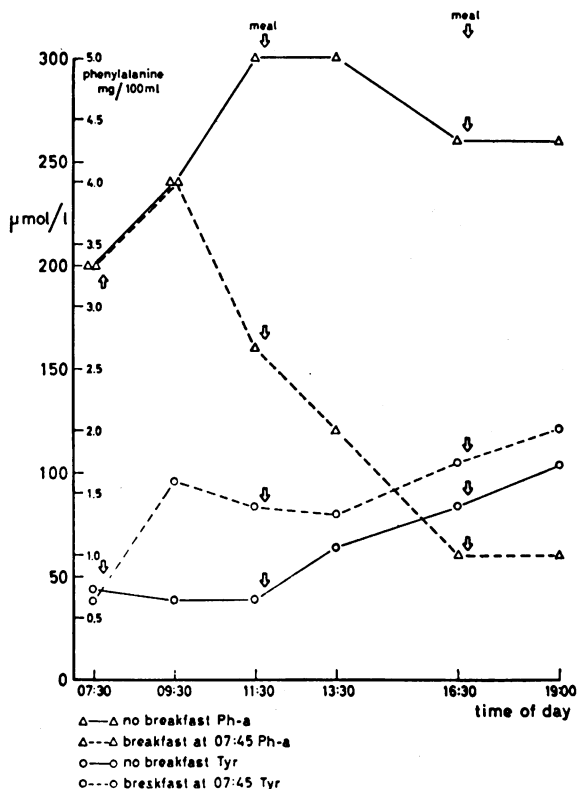
Inquiries and subscription orders should be addressed to:

Baillière Tindall

7 & 8 Henrietta Street, Covent Garden
London WC2E8QE England

Metabolic Aspects of Disease

Treatment of inborn errors has advanced our basic knowledge of disease. Metabolic problems are also a frequent consequence of disease.



Day-time variations in serum phenylalanine (triangles) and tyrosine (circles) in a phenylketonuric child having his first meal as usual at 07.45 hours or fasting until 11.45 hrs. Note the phenylalanine depressing effect of the breakfast (phenylalanine-restricted meal with Albumaid (R) (Güttler, Olesen & Wamberg—Kennedy Institute—Denmark in *Enzymopenic Anaemias, Lysosomes and other papers*, pages 149-158 E. & S. Livingstone.)

PRECISION PRODUCTS:

Designed to meet the metabolic defect are called for.

Products more fundamental than enzymes.

Products more basic than protein.

Products which enable precise nutrition.

Products which succeed where cows' milk is a failure.

PRECISION PRODUCTS FOR:

Phenylketonuria, Homocystinuria, Cystinosis, Maple Syrup Urine Disease, Hyperglycinaemia, Hyperprolinaemia, Arginine Succinic Urea, Histidinaemia, Tyrosinosis, Carbohydrate and Protein Intolerance, Malabsorptions, Cystic Fibrosis, Glycogen Storage Disease.

MILNER SCIENTIFIC AND MEDICAL RESEARCH

Now maintains a world-wide interest in every aspect of metabolism in disease, and products are directly available in most countries.

For further details please write to Sole U.K. Agents:

SCIENTIFIC HOSPITAL SUPPLIES LTD.
38 QUEENSLAND STREET, LIVERPOOL 7