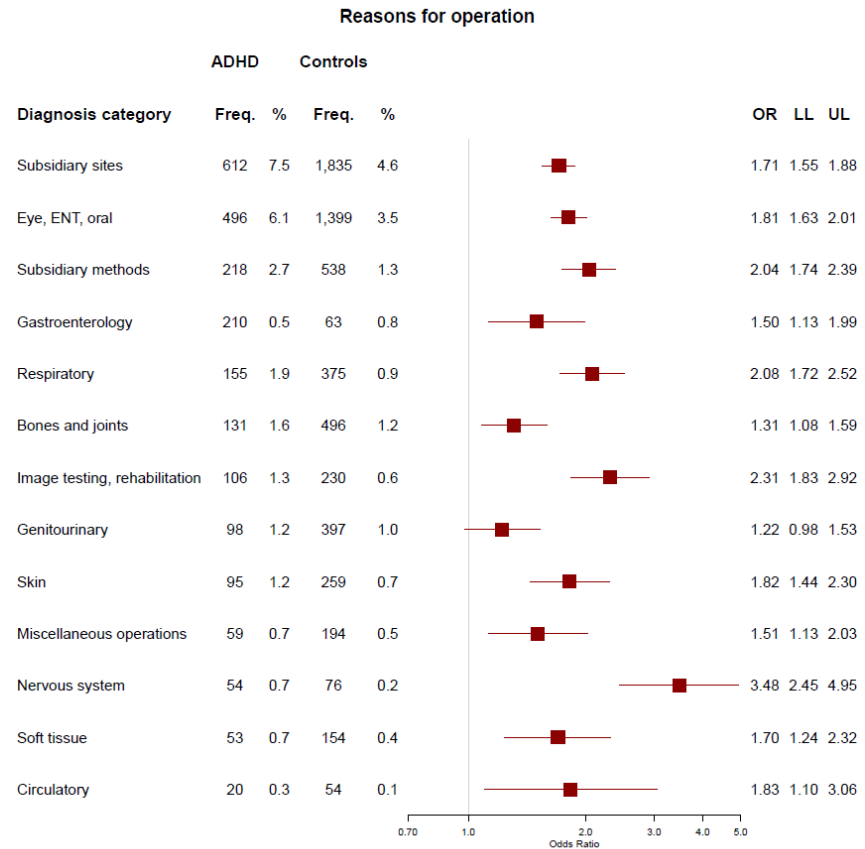


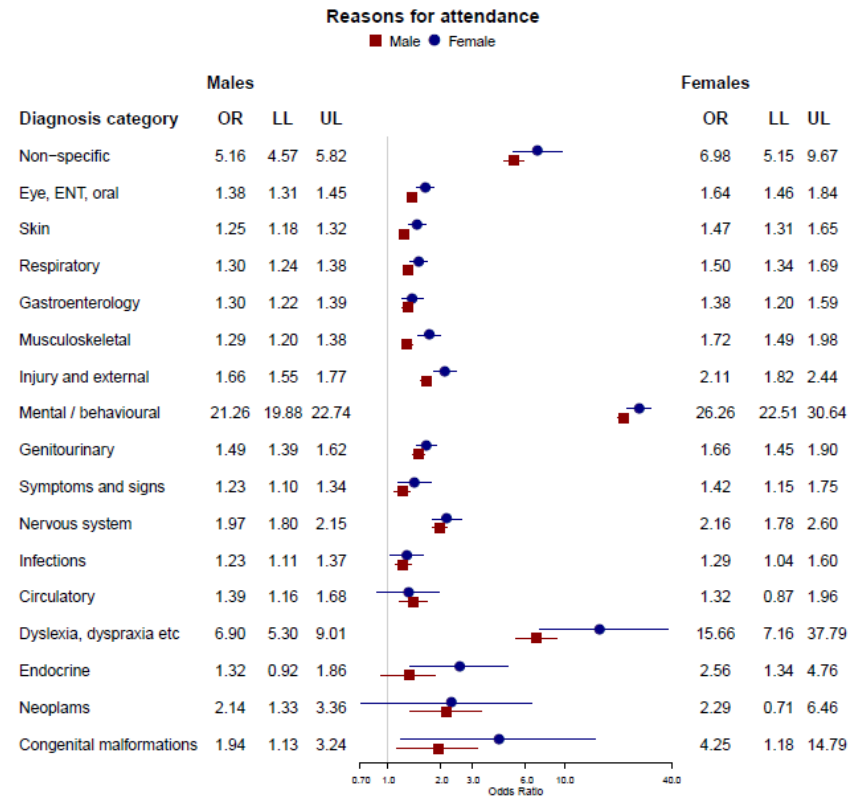
## Attention-deficit/hyperactivity disorder and healthcare service utilisation: a case control study: Supplementary tables

Supplementary figure 1 Admissions to hospital by categories of procedures (OPCS4 codes), comparing children and young people with (n=8,127) vs. without (n=40,136) ADHD (n=48,263)

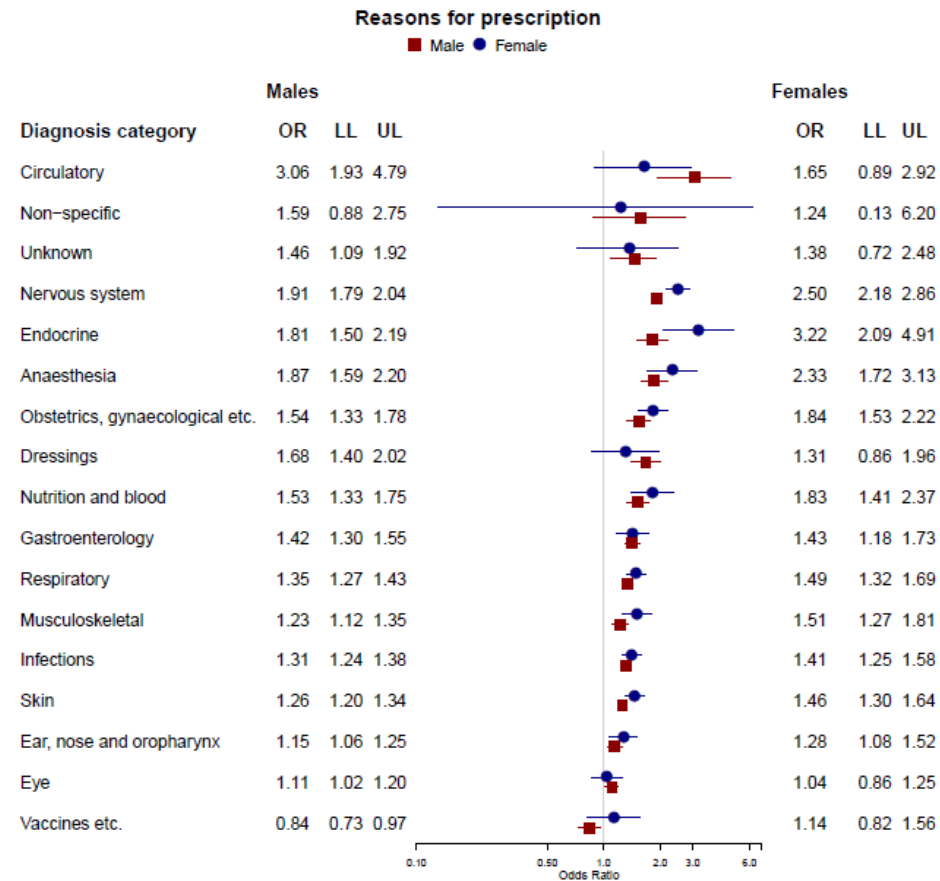


Notes: Categories are arranged in order of frequency for CYP with ADHD. Freq. – Frequency; OR – Odds ratio; LL – Lower limit of the 95%CI; UL – Upper limit of the 95%CI.

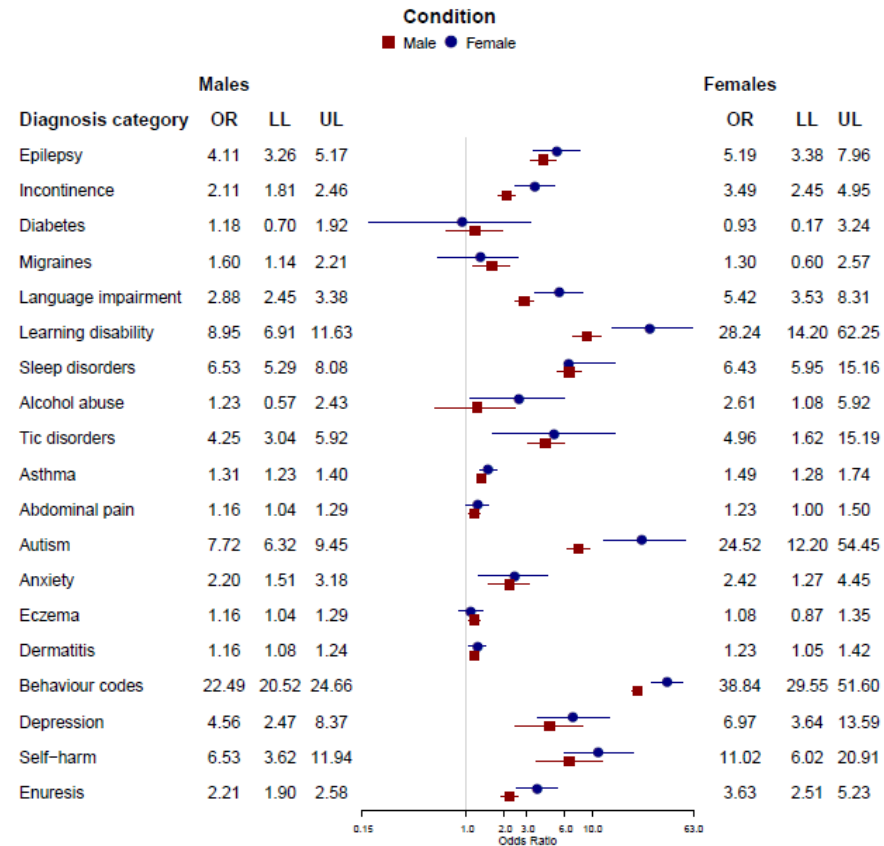
Supplementary figure 2 Attendances to the GP by categories of diagnoses (Read codes), comparing children and young people with vs. without ADHD by sex (n=48,263)



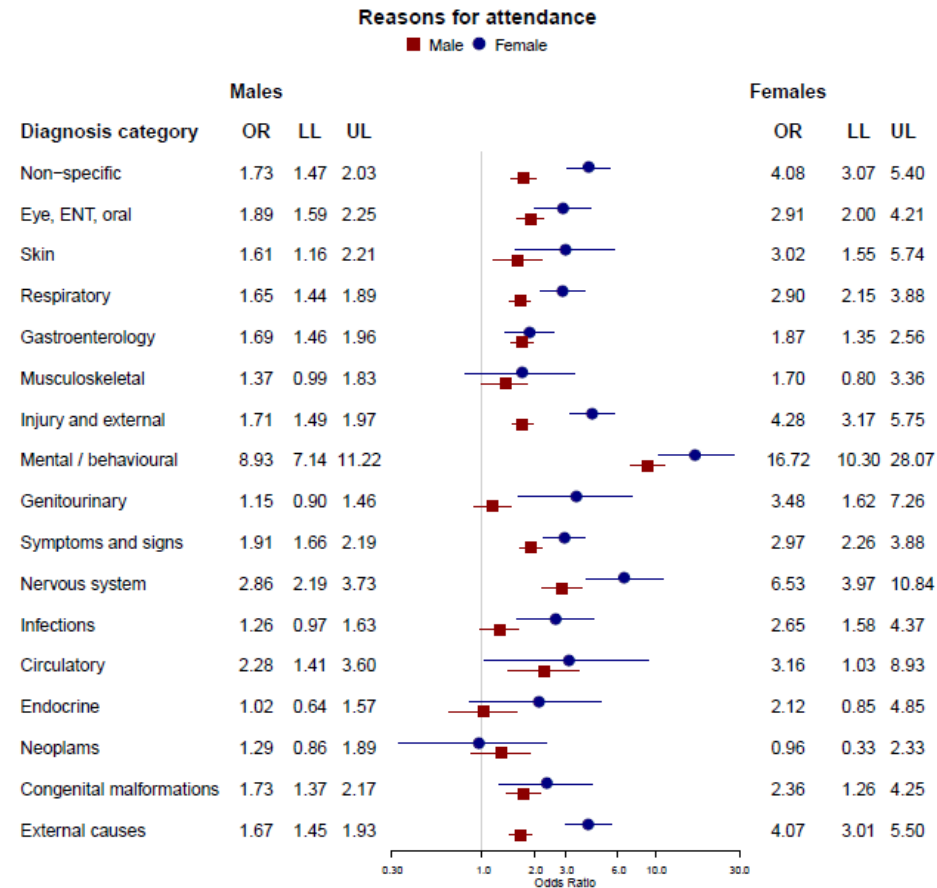
Supplementary figure 3 Attendances to the GP by categories of prescriptions (drug codes), comparing children and young people with vs. without ADHD by sex (n=48,263)



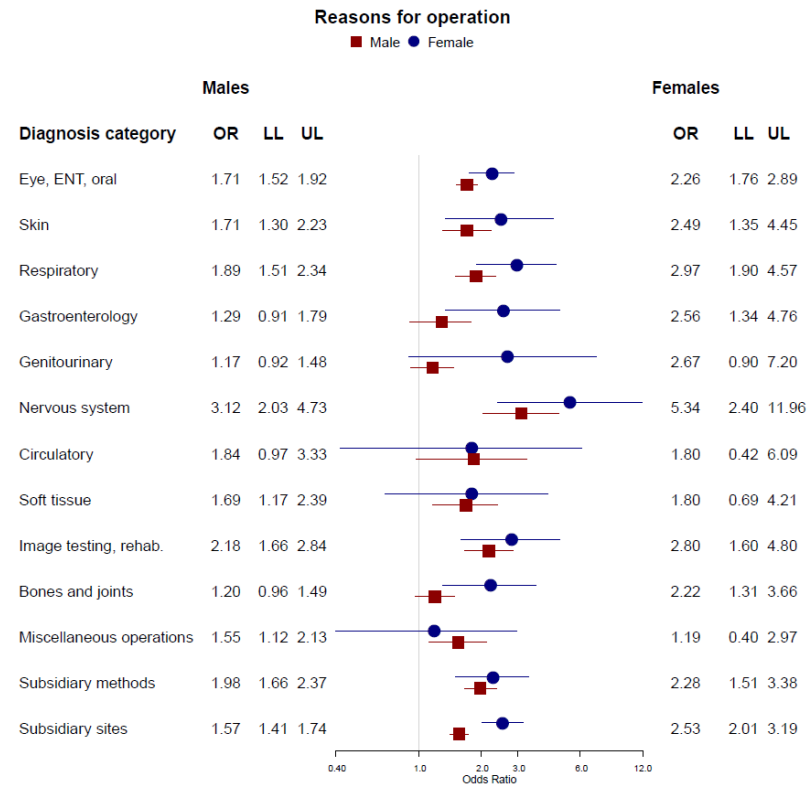
Supplementary figure 4 Medical conditions recorded in the GP medical records, comparing children and young people with vs. without ADHD by sex (n=48,263)



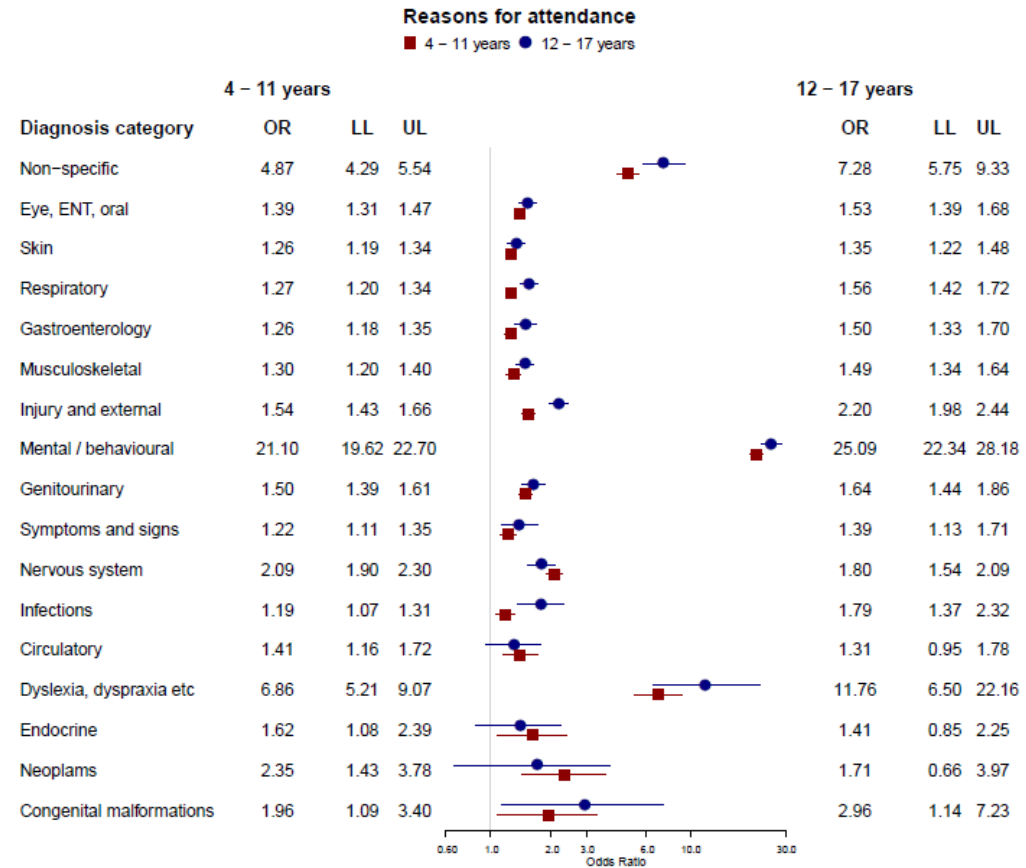
Supplementary figure 5 Admissions to hospital by categories of diagnoses (ICD10 codes), comparing children and young people with vs. without ADHD by sex (n=48,263)



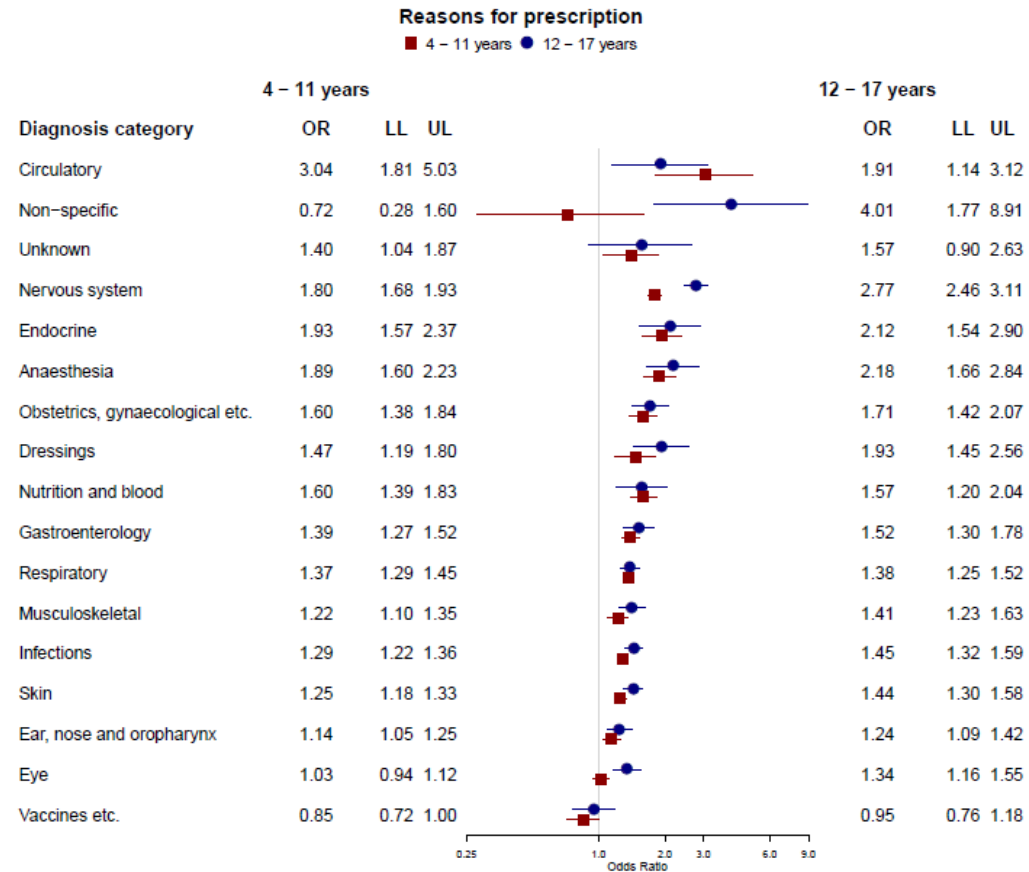
Supplementary figure 6 Admissions to hospital by categories of procedures (OPCS4 codes), comparing children and young people with vs. without ADHD by sex (n=48,263)



Supplementary figure 7 Attendances to the GP by categories of diagnoses (Read codes), comparing children and young people with vs. without ADHD by age 4-11 vs. 12-17 years (n=48,263)

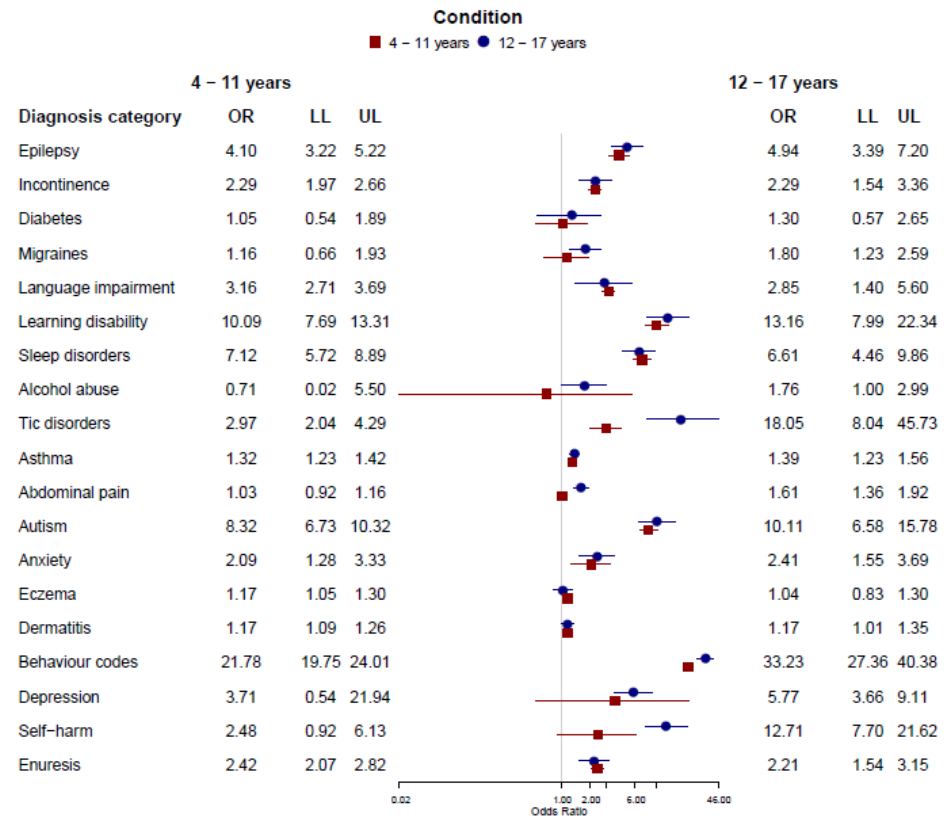


Supplementary figure 8 Attendances to the GP by categories of prescriptions (drug codes), comparing children and young people with vs. without ADHD by age 4-11 vs. 12-17 years (n=48,263)

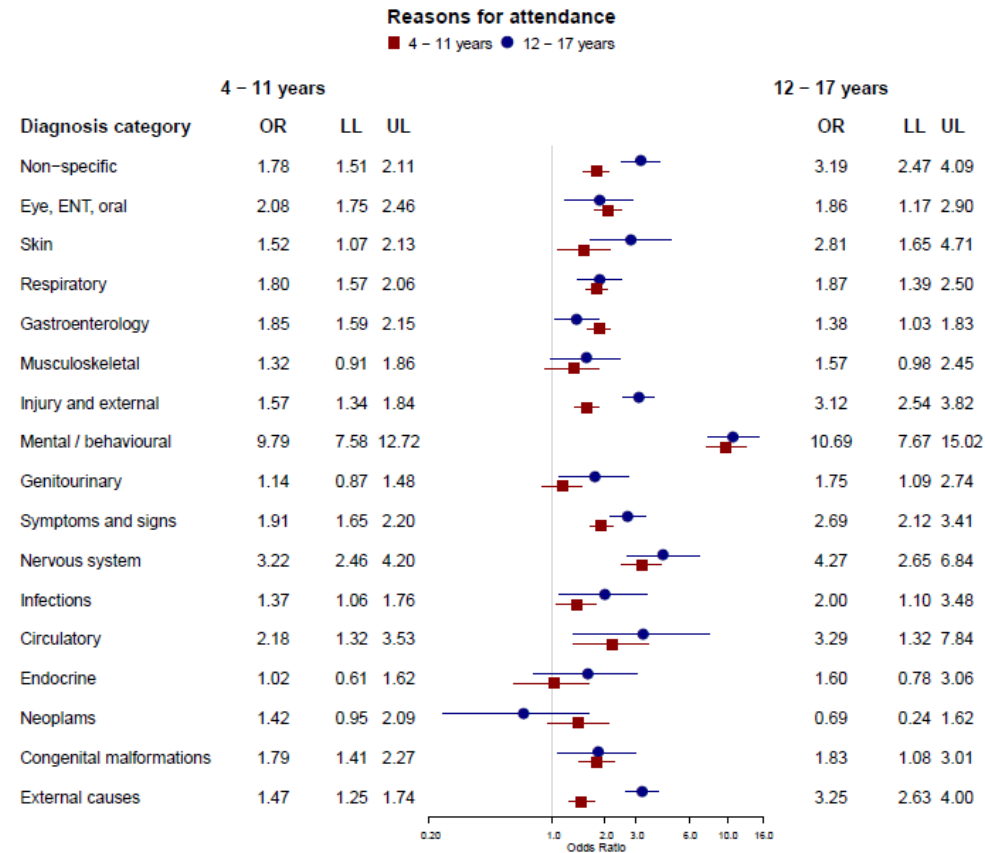




Supplementary figure 9 Medical conditions recorded in the GP medical records, comparing children and young people with and without ADHD by age 4-11 vs. 12-17 years (n=48,263)



Supplementary figure 10 Admissions to hospital by categories of diagnoses (ICD10 codes), comparing children and young people with vs. without ADHD by age 4-11 vs. 12-17 years (n=48,263)



Supplementary figure 11 Admissions to hospital by categories of procedures (OPCS4 codes), comparing children and young people with vs. without ADHD by age 4-11 vs. 12-17 years (n=48,263)

