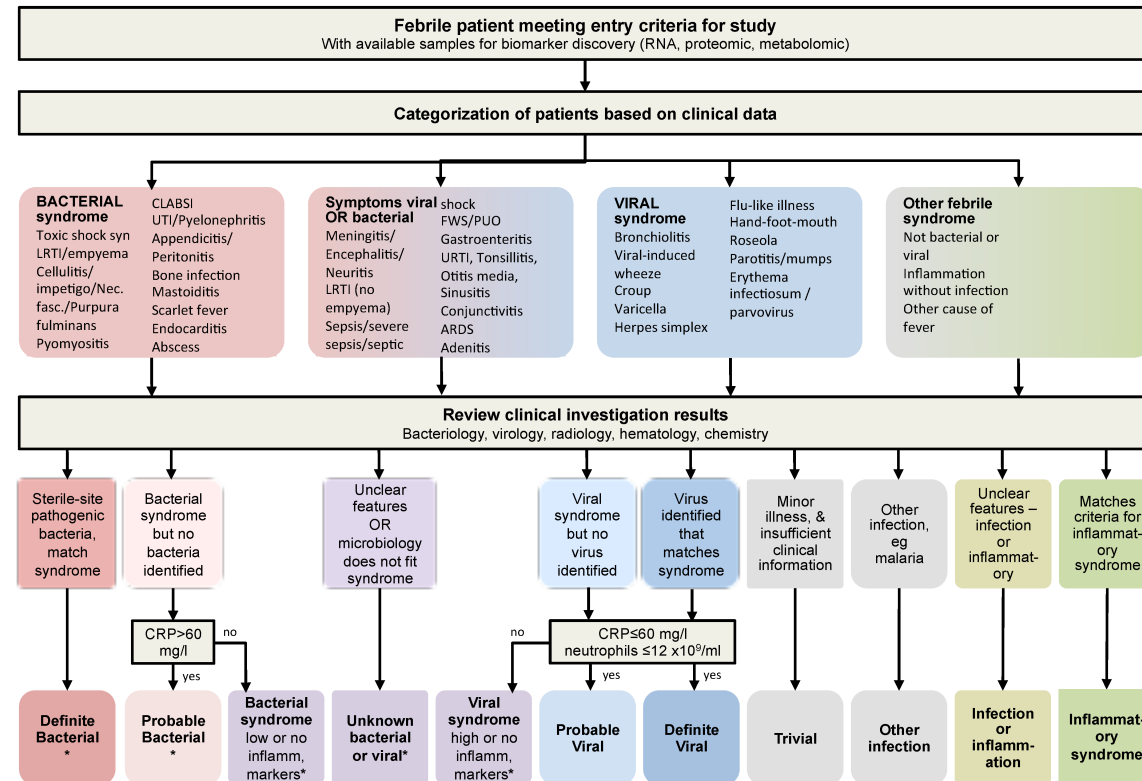


Supplemental file 2. Algorithm for classifying children at risk of serious infection



*DB/PB/unknown bacterial or viral: patients CAN have identified viral co-infection

Legend:

Following discharge, clinical phenotypes were assigned after review of all available clinical and laboratory data including biochemistry, haematology, radiology and microbiology. CRP C-reactive protein