

**SUPPLEMENTARY DATA**

Supplementary Table 1 – Search string.

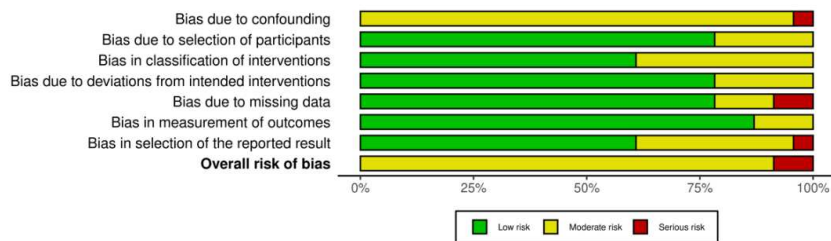
<b>Search string – searched December 2022</b>
(“p?ediatric” OR “child”) AND (“oncolog*” OR “chemotherapy” OR “immunotherapy” OR “cancer” OR “malignancy” OR “tumor”) AND (“central venous*” OR “central venous access” OR “central venous line” OR “central venous catheter” OR “CVC” OR “Broviac” OR “Hickman” OR “implanted port”)

Supplementary Table 2 – Mechanical complications. NS – not otherwise specified.

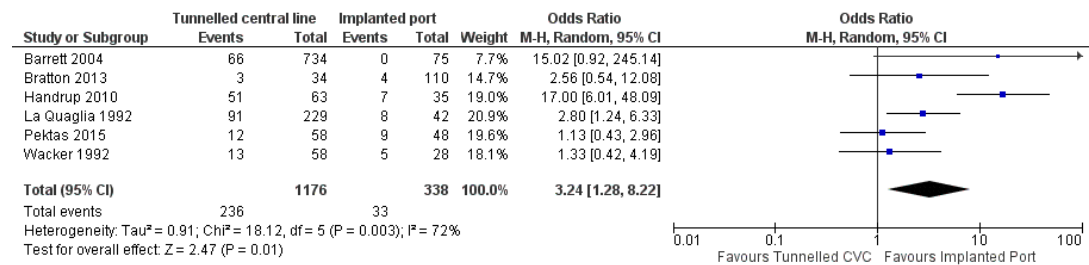
	Frequency Mechanical Complications (%)			
	Tunnelled Venous Catheters (n = 197)	External Central Venous Catheters	Central Venous Catheters (n = 85)	Implanted Port Central Venous Catheters
Occlusion	27 (14)		29 (34)	
Fracture/Rupture	18 (9)		22 (26)	
Displacement	82 (42)		23 (27)	
Malfunction NOS	70 (36)		11 (13)	



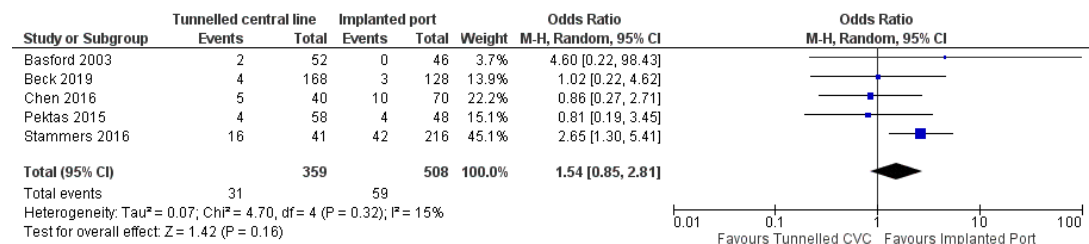
Supplementary Figure 1 – Risk of Bias Traffic-light Plot: the results of the risk of bias assessment for each study and domain.



Supplementary Figure 2 – Risk of Bias Weighted Bar Plot: Assessments of each risk of bias domain presented as a percentage across all included studies.



Supplementary Figure 3 – Comparison: Tunnelled CVC versus implanted port CVC, outcome: device removal.



Supplementary Figure 4 – Comparison: Tunnelled CVC versus implanted port CVC, outcome: venous thrombosis.