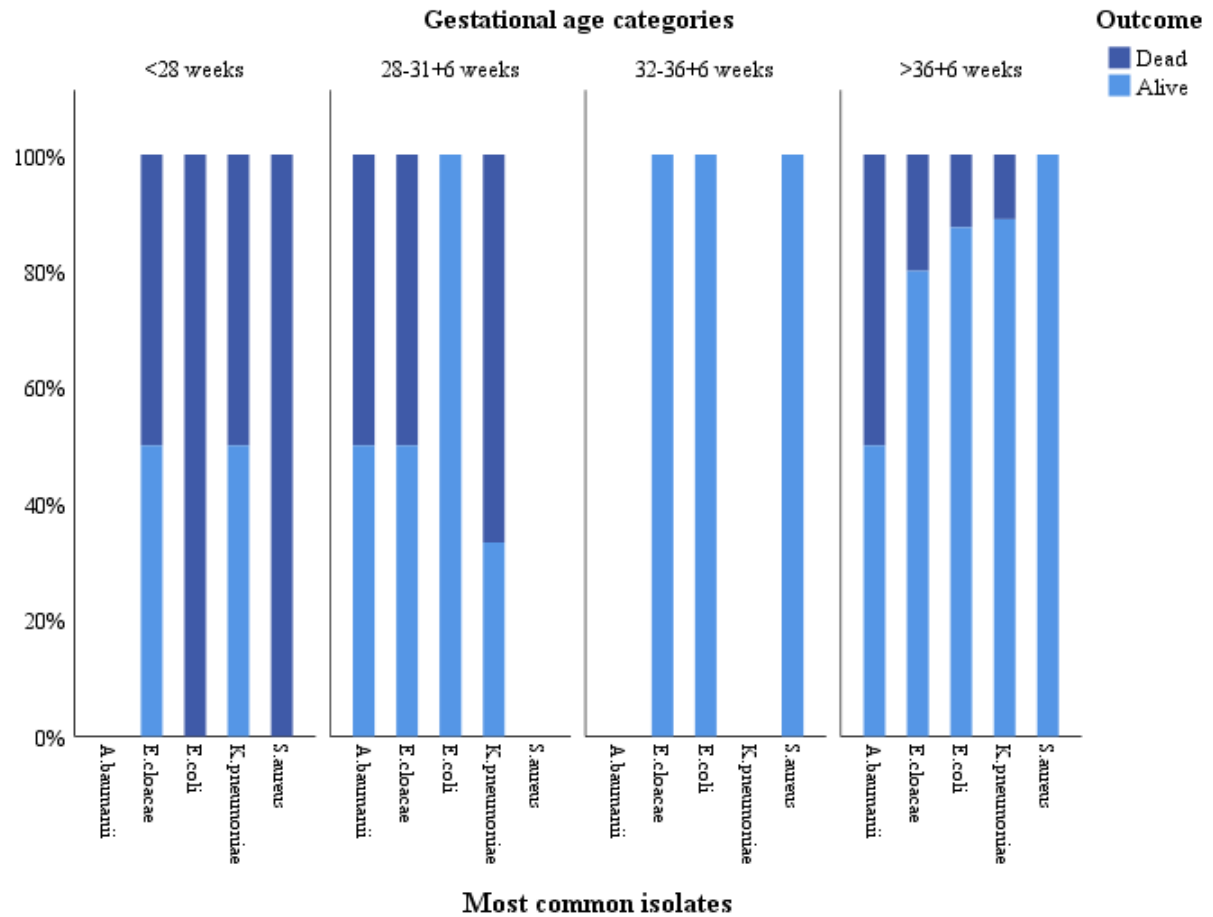


Supplementary Table. Number of admissions, suspected EOS cases and pathogen positive EOS cases on the neonatal ward per month to during study period.

Month/Year	No. of admissions	No. of suspected EOS cases (% of admissions)	No. of pathogen positive EOS cases (% of suspected EOS cases)
May-18	386	81 (21)	11 (14)
Jun-18	333	73 (22)	16 (22)
Jul-18	286	68 (24)	8 (12)
Aug-18	273	72 (26)	6 (8.3)
Sep-18	290	87 (30)	11 (13)
Oct-18	313	97 (31)	5 (5.2)
Nov-18	315	83 (26)	8 (9.6)
Dec-18	329	93 (28)	7 (7.5)
Jan-19	345	105 (30)	6 (5.7)
Feb-19	380	116 (31)	13 (11)
Mrt-19	355	101 (28)	6 (5.9)
Apr-19	348	96 (28)	8 (8.3)
May-19	355	77 (22)	4 (5.2)

Supplementary figure. Most common bacterial isolates and their mortality in culture-confirmed early-onset sepsis per gestational age category*



S. aureus: includes methicillin-resistant *S. aureus* (MRSA)

* unknown gestational ages not included.