

AN ADVANCE IN NEONATAL NUTRITION



PRIMENE

10% AMINO ACID INTRAVENOUS INFUSION

Amino acid profile
of cord blood

Contains Taurine

High strength
– suitable for low volume
regimens (*where fluid
restriction is essential*)

PRESCRIBING INFORMATION. PRIMENE 10% amino acid intravenous infusion. **PRESENTATION** A clear colourless to slightly yellow solution of amino acids without electrolytes for intravenous nutrition of neonates and infants. Each one litre of PRIMENE 10% contains: Active constituents: L-Isoleucine 6.70g, L-Leucine 10.00g, L-Valine 7.60g, L-Lysine 11.00g, L-Methionine 2.40g, L-Phenylalanine 4.20g, L-Threonine 3.70g, L-Tryptophan 2.00g, L-Arginine 8.40g, L-Histidine 3.80g, L-Alanine 8.00g, L-Aspartic acid 6.00g, L-Cysteine hydrochloride 2.46g, L-Glutamic acid 10.00g, Glycine FP 4.00g, L-Proline 3.00g, L-Serine 4.00g, L-Tyrosine 0.45g, L-Ornithine 2.49g, Taurine 0.60g. **USES** PRIMENE 10% is indicated in: 1) Children and infants; 2) Neonates, at term or premature, of normal or low birth-weight; when oral or enteral nutrition is impossible, insufficient or contra-indicated. **DOSAGE AND ADMINISTRATION** Dosage: According to the weight, age and protein catabolism of the child: 15 to 35ml of PRIMENE 10%/kg/24 hours. The infusion rate should not exceed 0.05ml/kg/minute. Route of administration: PRIMENE 10% in co-administration or as mixture should be administered depending on the final osmolarity of the solution infused, into a peripheral or central vein. Flow rate and duration: Infusion recommendations: Neonates and infants – continuous infusion (over 24 hours). Children – continuous infusion (over 24 hours)/cyclic infusion (over about 12 hours in 24). The flow rate should be adjusted according to the dosage, the characteristics of the infusion solution, the total volume intake per 24 hours and the infusion duration. Mode of administration: PRIMENE 10% is usually administered with a source of energy appropriate for the needs of the child, either by co-administration or as a pre-compounded mixture. **CONTRA-INDICATIONS, WARNINGS, ETC** Contra-Indication: PRIMENE 10% is contra-indicated in children with a congenital abnormality in the metabolism of one or more amino acids. **Precautions:** PRIMENE 10% must be used with caution when severe restriction of water intake is necessary, e.g. cardiac, respiratory or renal failure. In cases of renal insufficiency, the nitrogen intake must be adjusted according to the child's renal clearance. Caution should be exercised in cases of hepatic insufficiency with careful monitoring of blood ammonia levels. **Special precautions for use:** Careful monitoring of the infusion and of the clinical and biochemical state (with acid-base balance monitoring) of the child is essential. In view of its osmolarity, PRIMENE 10% should not be infused alone into a peripheral vein. **Side effects:** In cases of excessive administration, there is a possibility of metabolic acidosis and of raised blood urea nitrogen in children with renal insufficiency. Amino acid solutions may precipitate acute folic acid deficiency which should be corrected by supplements. Thrombophlebitis may occur if infused into peripheral veins. **LEGAL CATEGORY** Prescription Only Medicine. **PRODUCT LICENCE** NUMBER 3406/0008. **PRICE:** 100ml £6.20, 250ml £8.50.

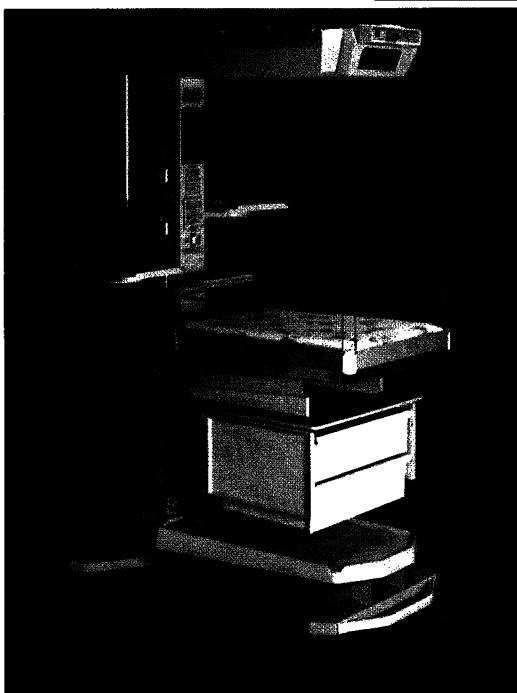
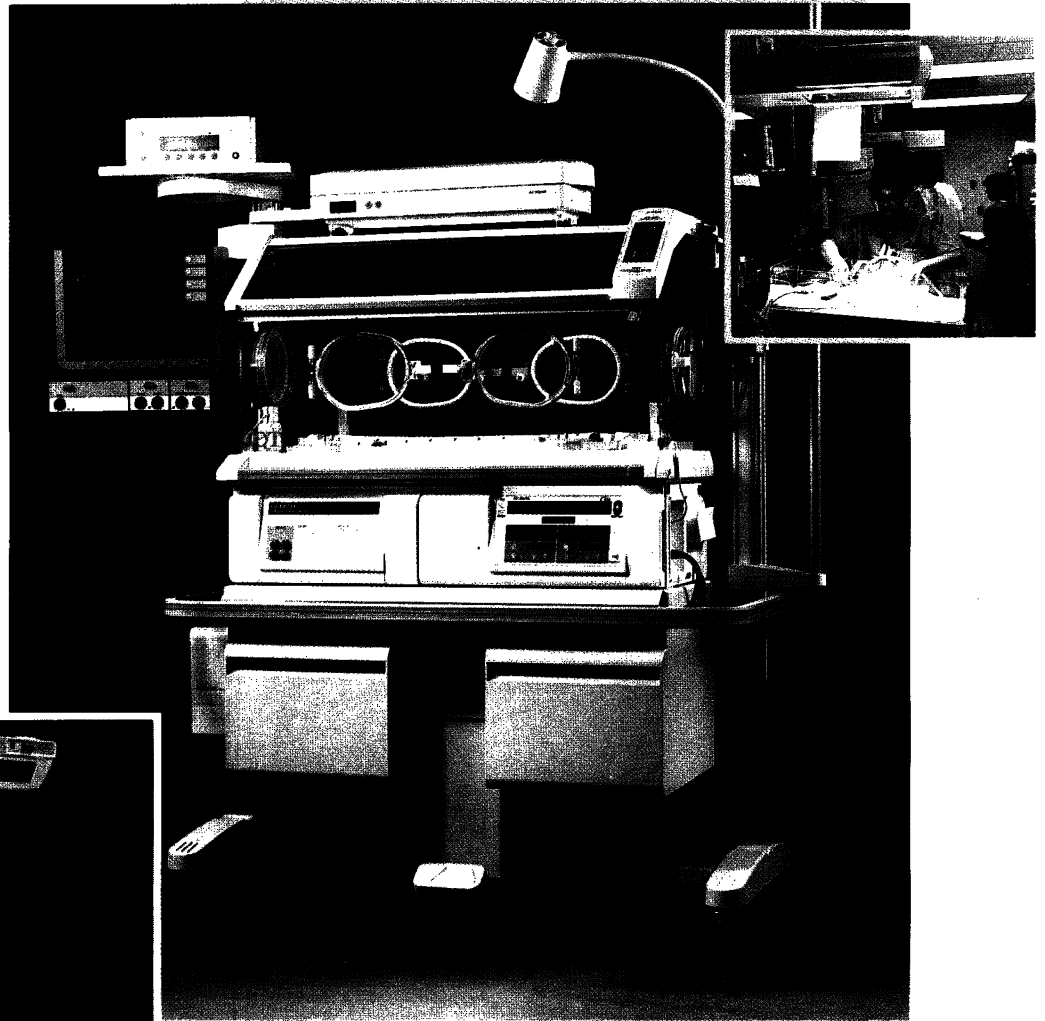


Clintec

Further information is available from:
CLINTEC NUTRITION LTD,
Shaftesbury Court, 18 Chalvey Park,
Slough, Berks SL1 2HT.
Tel: (0753) 550800.

Affiliated with Baxter Healthcare Corporation and Nestlé SA.

Air-Shields: Sweet dreams for all the family



For almost forty years Air-Shields has dedicated its resources to the design and development of Intensive Care equipment specifically for hospital nurseries. They have utilized their full experience and resources to create thermal environments to stabilize and nurture newborns.

C500

Their C500 QT Isolette® Incubator combines proven technology with innovative features to minimise excessive stimulation to the infant while, at the same time, reducing stress to parents and attending staff.

Infant Care

The Infant Intensive Care System is recognised as the comprehensive total care work station, with unparalleled accessibility and effective warming of low birth weight infants. Today, it is the standard of excellence for warming, phototherapy treatment and resuscitation of critically ill infants.

All products come with full service support and comprehensive training from S&W Vickers.

S&W Vickers

V Vickers
Medical

Ruxley Corner, Sidcup, Kent DA14 5BL Tel: 081-309 0433 Fax: 081-309 0819

32 Kerse Road, Stirling FK7 7TA Tel: 0786-51602 Fax: 0786-51603

4 Balmoral Business Park, Boucher Crescent, Belfast BT12 6HU Tel: 0232 669266

THE HEINZ FELLOWSHIPS OF THE BRITISH PAEDIATRIC ASSOCIATION

H J Heinz Company Limited generously endows Fellowships in Paediatrics which are administered by the British Paediatric Association.

Two or three Fellowships will be offered each year, the number and type awarded in any year depending on circumstances and the calibre of applicants available.

The types of Fellowship, which are open to men and women are:

- A To enable paediatricians from any part of the Commonwealth overseas to spend up to twelve weeks in the United Kingdom, meeting British Paediatricians and seeing something of their work. Preference will be given to those recently established in an academic career who can arrange their visit to allow attendance at the Annual Meeting of the British Paediatric Association in April 1994.
- C To enable paediatricians from the United Kingdom of Registrar, Senior Registrar, or Consultant status, or non-medically qualified members of the Association, in the early years of professional life to make a short working visit (up to three months) to a centre in a developing country, teaching or conducting research so as to benefit both fellow and hosts.

Applications for A Fellowships must be received by the British Paediatric Association not later than 31st December 1992.

Applications for C Fellowships can be accepted by 31st January, or 31st July 1993.

The conditions for the Fellowships and application forms may be obtained from the British Paediatric Association, 5 St Andrew's Place, Regent's Park, London NW1 4LB. Tel: 071-486 6151. Fax: 071-486 6009.

THE WAY AHEAD



The European Community's power to introduce legislation on health increases from January 1993. Governments throughout Europe are reassessing their health care systems. *Medicine in Europe*, a collection of articles originally published in the *BMJ*, looks at existing EC legislation, proposals for the future, and the likely effects of these proposals. As well as giving general information it covers specific topics such as medical manpower, training, and research; nursing; tobacco, alcohol, and drug misuse; drug prescribing; and ethical issues. EC policies will affect medicine in the member states; these articles will help health care professionals to understand how, when, and why they will be set.

Published June 1992
UK £8.95; Abroad £10.50
BMA members: UK £8.45; Abroad £10.00
including postage by air abroad

Available from: **BRITISH MEDICAL JOURNAL**,
PO Box 295, London WC1H 9TE, medical booksellers or
the **BMJ bookshop in BMA House** (book tokens accepted,
UK only).

Please send me _____ copy/ies of

MEDICINE IN EUROPE

I enclose _____ BMA Membership No _____

Please make cheques payable to **British Medical Journal**

Debit my credit card (please tick box)

Visa American Express Mastercard

Card No _____

Card expiry date _____

Signature _____

NAME _____

ADDRESS _____

_____ POSTCODE _____

Please send me a BMJ book catalogue

CALL FOR PAPERS

Quality in Health Care

EDITOR: **FIONA MOSS**
AUDIT SPECIALIST & RESPIRATORY PHYSICIAN

ASSOCIATE EDITORS: **Steve Nixon**, Surgeon, **Richard Baker**, GP, **Michael Maresh**, Obstetrician
Allison Kitson, Director of RCN Standards of Care Project
Richard Thomson, Public Health and **Chris West**, District General Manager

QUALITY IN HEALTH CARE is a new quarterly journal being launched in March 1992, by the BMJ to reflect and report initiatives to improve quality of health care, from everybody involved in health care.

The Journal aims to monitor:

- The relationship between clinical and medical audit and quality assurance programmes
- The development of clinical and medical audit as local activities and as larger national initiatives
- The integration of medical audit into medical practice
- The impact of medical and clinical audit on postgraduate and undergraduate training and education
- The relationship between management and quality initiatives

The editorial board includes, clinicians from a variety of specialties, together with representatives from management, nursing, other health care professions, quality assurance programmes, public health and medical education.

RESEARCH AREAS

- The development and testing of quality measures
- The development of outcome measures
- Studies on the appropriateness and effectiveness of medical and other clinical interventions
- Commissioned articles will include critical overviews of evidence on which medical and other clinical interventions are based. Opposing views will be sought and debated.

SUBMISSION

Papers should be submitted, in accordance with Instructions to Authors as set out in the BMJ, to:

Fiona Moss, Editor,
Quality in Health Care,
North West Thames Regional Health Authority, 40 Eastbourne Terrace,
Paddington, London W2 3QR.
Telephone: 071 262 8011 ext. 3098
Fax: 071 258 0530

To receive more information and a sample copy complete the form below:

Order Form

QUALITY IN HEALTH CARE

PUBLICATION: Quarterly
ISSN: 0963-8172

Please tick

- Please send me more information
- Please send me *Instructions to Authors*
- Please send me a sample copy

Signature _____

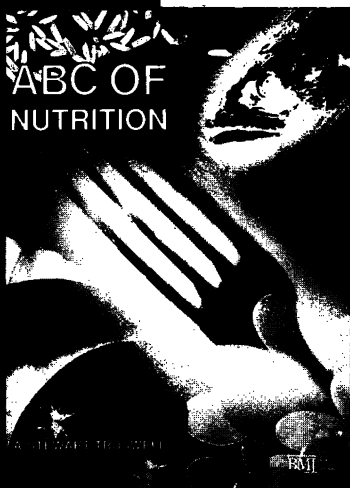
Name (Capitals) _____

Address _____

_____ Date _____

Send orders to: **British Medical Journal, BMA House, Tavistock Square, London, WC1H 9JR.**

ABC FROM THE BMJ '92



“Value judgments about food are being made all the time—they are nearly always subjective and usually wrong.” A Stewart Truswell, Boden professor of human nutrition at the University of Sydney, separates fact from fallacy in the *ABC of Nutrition*. This fully revised and updated edition offers the general medical reader a refreshingly down to earth review of all aspects of nutrition—from anorexia to obesity, infant feeding to dietary guides for the elderly—and will be invaluable for doctors and other medical professionals wishing to advise patients about their eating habits.

Review of the first edition

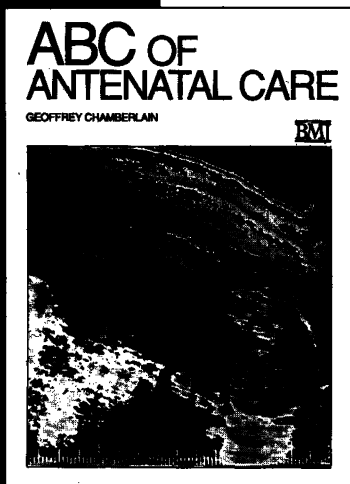
“Truswell . . . has written *the* introductory textbook for students of nutrition at any level . . . All physicians, medical students, nurses, nursing students, dietitians, dietician students, and those interested in nutrition education should have a copy of this book.”

American Journal of Clinical Nutrition

Second edition March 1992

Paperback • ISBN 0 7279 0315 2 • 120 pages

UK £8.95; Abroad £10.50 (BMA members £8.45 or £10.00)



Healthy women with normal pregnancies need little formal care; those at risk of damage to their own or their baby's health need the best of scientific medicine. The aim of antenatal care is to distinguish between these two groups, giving those who need it the full range of diagnostic and therapeutic measures while avoiding unnecessary intervention in those whose pregnancy proceeds normally. In the *ABC of Antenatal Care* Geoffrey Chamberlain, professor and chairman of the department of obstetrics and gynaecology at St George's Hospital Medical School, London, outlines the practicalities of routine antenatal care and the management of the major medical problems that may arise. Originally published as a series of articles in the *BMJ*, this manual discusses with common sense and humour the background to current practice and indicates how it could be improved in the 1990s.

Chapters include

- Normal antenatal management • Detection and management of congenital abnormalities • Work in pregnancy
- Medical problems in pregnancy • Preterm labour

January 1992

Paperback • ISBN 0 7279 0313 6 • 96 pages

UK £9.95; Abroad £12.00 (BMA members £8.95 or £11.00)

ORDER FORM British Medical Journal, PO Box 295, London WC1H 9TE

Please send me the following books:

Qty	Title	Amount
Prices include postage, by air abroad <input type="checkbox"/> Please send me a book catalogue		TOTAL £

NAME (print clearly) _____

ADDRESS _____

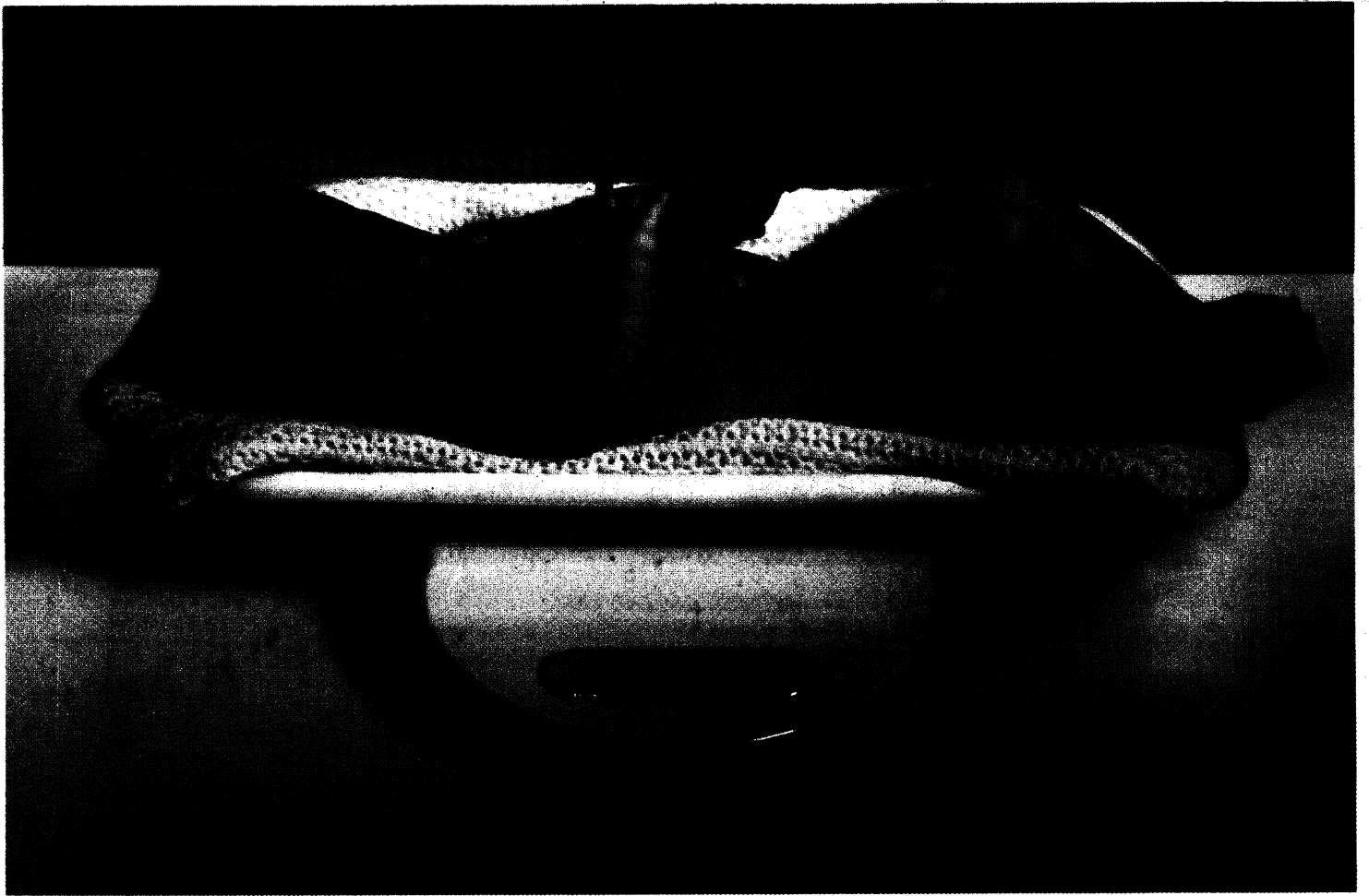
POSTCODE _____

Cheque enclosed (made payable to British Medical Journal) £ _____ Membership No _____

Debit my AMERICAN EXPRESS/VISA/MASTERCARD Card No _____

Expiry date _____ Signature _____

BMJ books are also available from major booksellers or the BMJ bookshop in BMA House. Book tokens accepted (UK only).



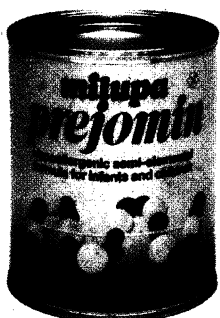
The importance of palatability is gaining weight.

Any hypoallergenic formula for the treatment of chronic diarrhoea and food intolerances is only as good as it tastes. Because for a baby to readily accept the prescription it must first be palatable.

Prejomin not only tastes better, it's also completely free of lactose and milk protein residues. This makes it suitable for even more hypersensitive patients.

And because Prejomin contains a carefully balanced mixture of nutrients, it helps the baby to regain weight quickly. And that's something we're sure that you and your patients will be more than happy to swallow.

Prejomin. The palatable solution to the dietetic management of chronic diarrhoea and food intolerances.



milupa[®]
Experts in
Infant Nutrition