



OPEN ACCESS

A qualitative feasibility study to inform a randomised controlled trial of fluid bolus therapy in septic shock

Caitlin B O'Hara,¹ Ruth R Canter,² Paul R Mouncey,² Anjali Carter,³ Nicola Jones,³ Simon Nadel,⁴ Mark J Peters,⁵ Mark D Lyttle,^{6,7} David A Harrison,² Kathryn M Rowan,² David Inwald,⁴ Kerry Woolfall¹

► Additional material is published online only. To view please visit the journal online (<http://dx.doi.org/10.1136/archdischild-2016-312515>).

¹Institute of Psychology, Health and Society, University of Liverpool, Liverpool, UK

²Clinical Trials Unit, Intensive Care National Audit and Research Centre (ICNARC), London, UK

³Patient and Public Involvement Partner, Watford, UK

⁴Paediatric Intensive Care Unit, St Mary's Hospital, Imperial College Healthcare NHS Trust, London, UK

⁵Institute of Child Health, University College London, UK and Great Ormond Street Hospital NHS Foundation Trust, London, UK

⁶Faculty of Health and Applied Sciences, University of the West of England, Bristol, UK

⁷Emergency Department, Bristol Royal Hospital for Children, Upper Maudlin Street, Bristol, UK

Correspondence to

Dr Kerry Woolfall, Institute of Psychology, Health and Society, The University of Liverpool, Block B, Room B112, Waterhouse Building, Liverpool L69 3GL, UK; K.Woolfall@liverpool.ac.uk

Received 12 December 2016

Revised 1 June 2017

Accepted 12 June 2017

Published Online First

28 August 2017

ABSTRACT

Objective The Fluids in Shock (FiSh) Trial proposes to evaluate whether restrictive fluid bolus therapy (10 mL/kg) is more beneficial than current recommended practice (20 mL/kg) in the resuscitation of children with septic shock in the UK. This qualitative feasibility study aimed to explore acceptability of the FiSh Trial, including research without prior consent (RWPC), potential barriers to recruitment and participant information for a pilot trial.

Design Qualitative interview study involving parents of children who had presented to a UK emergency department or been admitted to a paediatric intensive care unit with severe infection in the previous 3 years.

Participants Twenty-one parents (seven bereaved) were interviewed 16 (median) months since their child's hospital admission (range: 1–41).

Results All parents said they would have provided consent for the use of their child's data in the FiSh Trial. The majority were unfamiliar with RWPC, yet supported its use. Parents were initially concerned about the change from currently recommended treatment, yet were reassured by explanations of the current evidence base, fluid bolus therapy and monitoring procedures. Parents made recommendations about the timing of the research discussion and content of participant information. Bereaved parents stated that recruiters should not discuss research immediately after a child's death, but supported a personalised postal 'opt-out' approach to consent.

Conclusions Findings show that parents whose child has experienced severe infection supported the proposed FiSh Trial, including the use of RWPC. Parents' views informed the development of the pilot trial protocol and site staff training.

Trial registration number ISRCTN15244462—results.

INTRODUCTION

Qualitative research to incorporate patient perspectives in the design of a clinical trial can help ensure the trial is acceptable and appropriate to the needs of patients and their families.¹ This can increase the impact of the work, thus benefiting future trials and patient-centred healthcare.^{2,3}

Paediatric trials in emergency and critical care settings can be challenged by the difficulties of seeking prospective informed consent for trial participation^{4,5} as time-critical interventions cannot be delayed.⁶ So that vital research can proceed, clinical trials legislation has been amended^{7–11} to enable children to be entered into a trial without prior informed consent.^{4,12} This is research without prior

What is already known on this topic?

- Research is needed to determine whether restrictive fluid bolus therapy is more beneficial than current recommended practice in the resuscitation of children with presumed septic shock.
- Paediatric emergency and critical care trials encounter practical and ethical difficulties, as there is no time to seek informed consent in an emergency situation.
- Feasibility work incorporating patient perspectives can help test key parameters and ensure the trial is appropriate to the needs of patients and their families.

What this study adds?

- Our findings support the proposed Fluids in Shock (FiSh) pilot trial and demonstrate the value of using qualitative methods to involve parents in the design of trials.
- Tailored verbal information can help address parents' priorities, concerns and misconceptions about FiSh.
- This study provides new insight into what should happen if a child dies after being entered into a trial without prior informed consent.

consent (RWPC), also called deferred consent, and it entails seeking consent postintervention for the use of data already collected and continued study participation.^{10,13} Although RWPC has been subject to debate,^{14–16} recent studies have indicated parental support for this approach.^{1,12,17–20} However, further research is needed to explore parent and practitioner views on using RWPC in trials relating to more complex situations, such as comparing usual clinical care with a change in care, or when a child dies after being entered into a trial.¹

Rapid fluid replacement by bolus is integral to the management of children presenting to UK emergency departments (EDs) with septic shock. Current UK guidance, recommending fluid boluses of 20 mL/kg,²¹ is based on weak evidence.^{22–24} The Fluid Expansion as Supportive Therapy (FEAST) trial²⁵ compared fluid bolus resuscitation of 20–40 mL/kg with no bolus maintenance fluid in over 3000 African children with



CrossMark

To cite: O'Hara CB, Canter RR, Mouncey PR, *et al.* *Arch Dis Child* 2018;**103**:28–32.

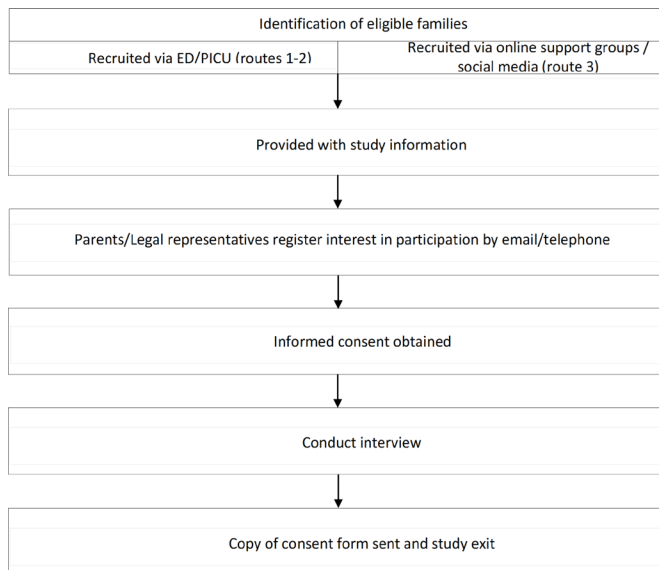


Figure 1 Fluids in Shock qualitative study flow chart. ED, emergency department; PICU, paediatric intensive care unit.

severe infection and reported 30% higher mortality with fluid bolus resuscitation.²⁵ This raised uncertainty and highlighted the lack of evidence for fluid bolus resuscitation for children in middle-income and high-income settings.

Accordingly, the Fluids in Shock (FiSh) randomised controlled trial (RCT) was designed to determine whether restrictive fluid bolus therapy (10 mL/kg) is more beneficial than current UK recommended practice (20 mL/kg). Prior to conducting the definitive RCT, the need for qualitative feasibility and clinical pilot work was identified to explore key challenges, including insufficient time to obtain informed consent and delivery of a fluid bolus protocol, which deviates from current recommended practice. This paper presents findings from the qualitative feasibility study, which aimed to review and explore with parents the acceptability of the FiSh Trial, approach to consent, potential barriers to recruitment and participant information materials for the pilot trial.

METHODS

Study design

We conducted semistructured telephone interviews with bereaved and non-bereaved parents of children who had presented to a UK ED or been admitted to a paediatric intensive care unit (PICU) with severe infection in the previous 3 years. Severe infection was defined as any condition leading to treatment for sepsis or septic shock, for example, meningococcal septicaemia. Parents were excluded if they did not speak English. We used previous research^{1 12 26} to develop an interview topic guide (see online supplementary file 1 table 1) and draft Participant Information Sheet (PIS) for the pilot trial (see online supplementary file 2). The topic guide contained open-ended questions and prompts to help explore parents' views on the acceptability of the FiSh Trial, including the pilot trial PIS and approach to consent. A separate section of questions was developed for bereaved parents.

Recruitment and sampling procedure

Based on previous studies,¹ we anticipated recruiting 15–25 parents. We used three recruitment routes (figure 1).

Recruitment route 1: postal contact

Clinicians used hospital medical records to identify the 15 most recent parents (including up to five bereaved) of children who met the inclusion criteria. Those identified were sent a postal invitation, including a covering letter and qualitative study PIS that detailed how to register interest in taking part.

Recruitment route 2: advertising in PICU

A participant information poster and copies of the qualitative study PIS were placed in PICU family rooms in hospitals.

Recruitment route 3: advertising online including social media

We posted an advert on Twitter and Facebook and asked relevant charities and parent support groups to place the advert on their website and social media.

Eligibility screening and interview conduct

CBO and KW responded to parents' requests to participate in sequential order, confirmed eligibility and emailed them the pilot trial PIS. Audio-recorded verbal consent was sought before the interview began.

Digital audio recordings were transcribed verbatim, anonymised and checked for accuracy. Respondent validation was used to add unanticipated topics to the topic guide as interviewing and analysis progressed.²⁷ Interviews aimed for data saturation, that is, the point where no new major themes are discovered in analysis.^{28 29} Screening stopped when data saturation^{28 29} was reached. All participants received a £30 shopping voucher and letter thanking them for their time.

Analysis

CBO (a psychologist) led the analysis with assistance from KW (a sociologist). Analysis was broadly interpretive and iterative^{30 31} (see online supplementary file 3 table 2). Informed by the constant comparative approach, the aim was to provide accurate representation of parental views on trial design and acceptability.^{32–35} We used NVivo V.10 software to assist in the organisation and coding of data.

RESULTS

Sample

Four UK hospitals took part in recruitment routes 1 and 2, and 11 charities/support groups in recruitment route 3. A total of 58 parents registered interest, of whom 29 were screened (figure 2); three were deemed ineligible and five did not confirm a date for interview. Data saturation^{28 29} was reached when 21 parents were interviewed (18 mothers (5 bereaved), 3 fathers (2 bereaved)).

Bereaved parents were interviewed on average 11 (median) months since admission (range: 3–31) and non-bereaved parents on average 16.5 months since admission (range: 1–41). The median hospital length of stay for their child was 1 day (range: 1–25) for bereaved parents and 14 days (range: 4–140) for non-bereaved parents. Eight parents had previously participated in a clinical trial. One mother had experience of RWPC. Interviews took between 30 and 55 min (see online supplementary file 4 table 3 for selected quotations from parents by theme).

RWPC is acceptable but with some initial concerns

A general definition of RWPC was first read to parents (box 1). Many described how they may be initially surprised to discover that their child had been entered into a trial without their prior consent. However, concerns subsided once reasons for using RWPC in emergency situations were considered. Parents went

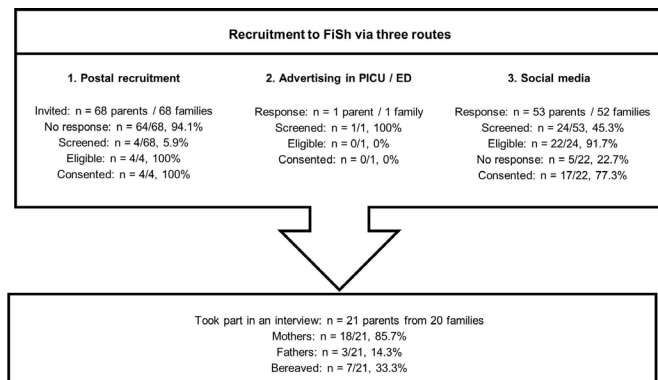


Figure 2 FiSh qualitative study parent recruitment process. For families identified using social media, responses were dealt with in the order they were received, screened, then interviewed where eligible. Data saturation was reached without the need to screen the remaining responses. ED, emergency department; FiSh, Fluids in Shock; PICU, paediatric intensive care unit.

on to respond favourably to RWPC, describing it as a logical solution to enable research in challenging circumstances.

Support for FiSh Trial but with some concerns and misconceptions

Overall, parents spoke of their support for FiSh and its use of RWPC. Many viewed trial participation as a way to help other families and children in the future. Some parents thought that a recruitment discussion could provide a “*distraction*” (P9, mother, non-bereaved) and foster “*a sense of control in a situation where you feel completely out of control*” (P6, mother, non-bereaved).

However, support for the FiSh Trial appeared to be dependent on the intervention being successful and “*how well [their child] was*” (P4, mother, non-bereaved). Parents, including those who were bereaved, said they would question whether their child’s participation in the trial was “*the reason [their child] didn’t survive*” (P19, mother, bereaved), in that eventuality.

Some parents held specific concerns and misconceptions, which influenced their views on the acceptability of the FiSh Trial. Many were concerned that a change from current practice may jeopardise their child’s chances of survival. This was linked to the misconception that routinely used treatments are proven to be effective. Parents were also concerned that restrictive fluid bolus therapy would be insufficient as a liberal approach to fluid bolus resuscitation was viewed as being more likely to save a child’s life.

Box 1 Description of research without prior consent read to participants during interview

Due to the need to treat a patient in an emergency without delay, or because parents may not always be present when a child needs treatment, it is not always appropriate or possible to obtain consent before a child is entered into a trial. To enable research to be conducted in the emergency setting, many countries (including the UK) allow consent to be sought as soon as possible afterwards. This is for permission to use the data already collected and to continue in the trial. This is research without prior consent (sometimes called deferred consent). Research without prior consent is a relatively new approach to seeking consent in the UK.

Box 2 Examples of questions raised by parents

- ▶ Would the amount of fluid given be corrected if my child was not stabilising?
- ▶ Does the amount of fluid have a direct impact on outcome?
- ▶ What is a fluid bolus?
- ▶ What is the timing of fluid bolus administrations?
- ▶ Will I be able to find out which group my child was randomised to?
- ▶ Does the fluid treatment apply regardless of the child’s age?

In response, CBO directed parents to sections of the pilot trial PIS and provided tailored explanations, such as the weak evidence base for current recommended practice, how fluid resuscitation is part of a larger treatment package and monitoring procedures. Such tailored explanations appeared to address parents’ initial concerns and misconceptions about the proposed FiSh Trial.

Unclear or missing study information

All parents described the pilot trial PIS as being clear and concise. However, parents raised questions about aspects of FiSh (box 2), indicating that key information was unclear or missing. Importantly, this information was prioritised by parents, impacting on their understanding and views about the acceptability of the trial. Many said they would not ask questions or raise concerns with a FiSh recruiter.

When to approach parents to discuss the FiSh Trial

Parents described how a FiSh Trial discussion should happen after the initial stress had subsided and their child’s condition had stabilised, preferably within 24–48 hours. Parents expressed the need for recruiters to gauge appropriate timing of this discussion in consultation with the clinical team.

We asked bereaved parents to consider a scenario in which their child had been entered into FiSh before death and a practitioner approached them after death to discuss the trial. They suggested that FiSh recruiters should be prepared to address concerns about whether trial participation was “*a reason as to why [death] happened*” (P21, mother, bereaved). They emphasised a need for sensitivity and time, particularly if their child had died very quickly, without warning. Parents described their anger in the initial stages of bereavement, which they believed would negatively impact on decision-making abilities and their response to a FiSh Trial discussion. Nevertheless, all bereaved parents agreed it would be acceptable to discuss FiSh at a later time, after they had left hospital. Bereaved parents valued medical research and described how they would have consented to the use of their child’s data as a way to help other children in the future.

We then sought bereaved parents’ views on the most appropriate way of contacting parents to discuss FiSh following death of a child (box 3). Several parents thought an appropriately timed face-to-face discussion with a nurse or consultant would be preferable to a telephone call or letter. The majority however supported contact via post at 4 weeks and then at 8 weeks after death as long as the ‘opt-out’ approach provided was emphasised in bold and the letter personalised, ideally by a known member of the clinical team. However, parents described grief as a “*very personal matter*” (P17, mother, bereaved), making it difficult to develop general recommendations on how best to approach parents in this situation.

Box 3 Options for approaching bereaved parents to discuss the Fluids in Shock Trial after a child has died

The researcher presented several options to consider:

- ▶ Face-to-face discussion with a nurse or doctor
- ▶ Telephone call by a nurse or doctor
- ▶ Personalised letter 4 weeks after randomisation, followed by a second letter 8 weeks after randomisation (ie, if no response is received after sending the initial letter); letters would explain how to opt out of the study and that there would be no need to respond if they wanted their child's data to be used in the trial

DISCUSSION

This study provides insight into the acceptability of the FiSh Trial by exploring the views of parents with relevant experience. Consistent with the CONNECT (CONseNt methods in paediatric Emergency and urgent Care Trials) study findings^{1 12} and associated guidance on RWPC,^{36 37} some parents were initially surprised about the concept of RWPC. However, initial concerns subsided when reasons why informed consent could not be sought were considered. As also shown in previous international research,^{18 38} parents questioned their ability to provide a rational, informed decision about research in an emergency situation^{1 4 18 39} and supported alternative approaches to prospective informed consent as a way to enable research in time-critical situations to improve treatments for critically ill children.^{1 18 38 40}

Our findings highlight specific concerns and misunderstandings, which initially influenced parental views on acceptability of the FiSh Trial.¹⁹ Concerns included the proposed change from current clinical practice and its potential impact on a child's recovery. Although the pilot PIS included a description of the weak evidence for current practice, many held a misconception that this was the proven optimal treatment. Moreover, several parents were unclear about the nature of fluid bolus therapy and only one understood that 20 mL/kg would be given to all children before being entered into FiSh. Nevertheless, all parents reported they would have provided consent for the use of their child's data in FiSh, valuing the opportunity to advance medical research and viewing their child's participation as a means to help similar families in the future.¹ This is consistent with previous findings that emphasise the need for simple, non-medicalised information to improve parental understanding of trial information and inform their research decisions.^{1 26 41} Tailored explanations appeared to address parents' priorities, concerns and misconceptions. These findings were used to develop the FiSh pilot trial site staff training, which emphasised the need for recruiters to provide opportunities for questions, as parents are unlikely to voice potential concerns.^{19 42}

Consistent with previous studies that have explored approaches to consent in time-critical situations,^{1 18 40 43 44} the timing of the recruitment discussion was found likely to impact on parental responses to FiSh. Although many parents described how consultation with the clinical team would help recruiters gauge when to approach families to discuss the trial,³⁷ their views on when and how this initial contact should happen differed, depending on whether or not their child survived. Parents of children who had survived severe infection expressed how they would wish to be approached in hospital, ideally within 24–48 hours of randomisation, once their child's condition had stabilised.³⁶ In contrast, bereaved parents emphasised that parents in this situation should

not be approached immediately after their child's death, as this may heighten feelings of grief and anger. It was this perceived burden of having a research discussion with vulnerable families that led to a waiver of consent (ie, no trial discussion) when a child died in FEAST.^{18 40 45} However, our findings do not support the model used in this study,¹⁷ as bereaved parents described how they would wish to discuss the use of their child's information in FiSh, as long as the timing of this discussion was appropriate.^{12 37}

Our findings provide new insight into what should happen if a child dies after being entered into a trial.³⁶ Although some bereaved parents preferred a face-to-face research discussion, the majority responded favourably to being contacted via a letter, providing the opportunity to meet with a practitioner at a later date. Bereaved parents responded favourably to the inclusion of their child's data in the trial unless the family notify the research team, provided this 'opt-out' approach is emphasised in bold text within the letter. Importantly, parents recommended that the letter should be sent from a practitioner known to the family with whom they had developed a close and trusting rapport.³⁶ As septic shock is associated with an 8%–17% mortality rate,^{23 46} these findings are particularly important and will help design a trial that is appropriate to the needs of vulnerable families. The views of bereaved parents also highlight the need for practitioners to prepare to respond to parents who are concerned that trial participation may have resulted in harm.

Strengths, limitations and future implications

While our sample size was relatively small, data saturation was reached³⁵ and both bereaved and non-bereaved parents were included. As the majority of parents were recruited using social media, our sample may comprise parents with an interest in research and may not reflect the potential FiSh sample. Although all parents had experience of paediatric emergency and critical care, the majority had no previous experience of RWPC. Additional qualitative research will therefore be conducted within the FiSh pilot trial to further explore parental acceptability of the FiSh Trial, approach to consent and practitioner training needs.

Our findings add to the existing literature on RWPC in paediatric emergency and critical care settings. As such, they provide an important contribution and demonstrate the value of using qualitative methods in considering family-centred parameters needed to inform the design and conduct of challenging trials.^{47 48}

Finally, children were not involved in this study. Research is required to explore children's views on RWPC in emergency and critical care trials.

CONCLUSIONS

Overall, findings suggest that parents whose child has experienced severe infection support the proposed FiSh Trial, including the use of RWPC. Parents' views have informed the development of the pilot trial protocol and site initiation training.

Acknowledgements The authors thank all the parents who shared their experiences with us; their contribution to the research is invaluable. The authors are grateful to all the staff at participating UK hospitals and charities/support groups for their help with recruitment. The authors would also like to thank the Paediatric Emergency Research in the UK and Ireland (PERUKI) and Paediatric Intensive Care Society (PICS) for their support and contribution to the development of this research.

Contributors KW, DI, PRM, MDL, SN, MJP, DAH, AC, NJ and KMR conceived and designed the research. CBO, KW, DI, AC, NJ, RRC, PRM and KMR contributed to the design of recruitment materials and topic guide. CBO conducted the interviews. CBO and KW analysed the data. CBO, KW and DI wrote the paper. MDL, RRC, MJP and

PRM critically revised the manuscript. All authors reviewed and approved the final manuscript.

Funding This study was funded by the National Institute for Health Research (NIHR) – Health Technology Assessment (HTA) Programme (Project: 13/04/105). The views and opinions expressed therein are those of the authors and do not necessarily reflect those of the HTA, NIHR, NHS or the Department of Health. The researchers are independent from the funders. The funders had no role in the collection, analysis and interpretation of data; in the writing of the report; and in the decision to submit the article for publication. All authors had full access to all of the data in the study and can take responsibility for the integrity of the data and the accuracy of the data analysis.

Competing interests None declared.

Ethics approval North West – Liverpool Central Research Ethics Committee (15/NW/0913).

Provenance and peer review Not commissioned; externally peer reviewed.

Open Access This is an Open Access article distributed in accordance with the terms of the Creative Commons Attribution (CC BY 4.0) license, which permits others to distribute, remix, adapt and build upon this work, for commercial use, provided the original work is properly cited. See: <http://creativecommons.org/licenses/by/4.0/>

© Article author(s) (or their employer(s) unless otherwise stated in the text of the article) 2018. All rights reserved. No commercial use is permitted unless otherwise expressly granted.

REFERENCES

- 1 Woolfall K, Young B, Frith L, *et al.* Doing challenging research studies in a patient-centred way: a qualitative study to inform a randomised controlled trial in the paediatric emergency care setting. *BMJ Open* 2014;4:e005045.
- 2 Ennis L, Wykes T. Impact of patient involvement in mental health research: longitudinal study. *Br J Psychiatry* 2013;203:381–6.
- 3 O’Cathain A, Thomas KJ, Drabble SJ, *et al.* Maximising the value of combining qualitative research and randomised controlled trials in health research: the QUAlitative Research in Trials (QUART) study—a mixed methods study. *Health Technol Assess* 2014;18:1–197.
- 4 Brierley J, Larcher V. Emergency research in children: options for ethical recruitment. *J Med Ethics* 2011;37:429–32.
- 5 Caldwell PH, Dans L, de Vries MC, *et al.* Standard 1: consent and recruitment. *Pediatrics* 2012;129(Suppl 3):S118–23.
- 6 Roberts I, Prieto-Merino D, Shakur H, *et al.* Effect of consent rituals on mortality in emergency care research. *Lancet* 2011;377:1071–2.
- 7 Council of the European Union. *Proposal for a Regulation of the European Parliament and of the Council on Clinical trials on medicinal products for human use, and repealing Directive 2001/20/EC*. Brussels: Council of the European Union, 2013.
- 8 Iwanowski P, Budaj A, Członkowska A, *et al.* Informed consent for clinical trials in acute coronary syndromes and stroke following the European Clinical Trials Directive: investigators’ experiences and attitudes. *Trials* 2008;9:1–6.
- 9 Kompanje EJ, Maas AI, Menon DK, *et al.* Medical research in emergency research in the European Union member states: tensions between theory and practice. *Intensive Care Med* 2014;40:496–503.
- 10 Legislation.gov.uk. The Medicines for human use (Clinical trials) and Blood Safety and Quality (Amendment) Regulations. 2008.
- 11 Department of Health. *Medicines for human use Regulations 2004*. London: UK Government, 2004.
- 12 Woolfall K, Frith L, Gamble C, *et al.* How parents and practitioners experience research without prior consent (deferred consent) for emergency research involving children with life threatening conditions: a mixed method study. *BMJ Open* 2015;5:e008522.
- 13 Fost N, Robertson JA. Deferring consent with incompetent patients in an intensive care unit. *IRB* 1980;2:5–6.
- 14 Cooke RW. Good practice in consent. *Semin Fetal Neonatal Med* 2005;10:63–71.
- 15 Farnell SM. Medical research: why trouble the patient for informed consent? *Med Pediatr Oncol* 2002;39:207–9.
- 16 Lecouturier J, Rodgers H, Ford GA, *et al.* Clinical research without consent in adults in the emergency setting: a review of patient and public views. *BMC Med Ethics* 2008;9:9.
- 17 Gamble C, Nadel S, Snape D, *et al.* What parents of children who have received emergency care think about deferring consent in randomised trials of emergency treatments: postal survey. *PLoS One* 2012;7:e35982.
- 18 Molyneux S, Njue M, Boga M, *et al.* ‘The words will pass with the blowing wind’: staff and parent views of the deferred consent process, with prior assent, used in an emergency fluids trial in two African hospitals. *PLoS One* 2013;8:e54894.
- 19 Woolfall K, Shilling V, Hickey H, *et al.* Parents’ agendas in paediatric clinical trial recruitment are different from researchers’ and often remain unvoiced: a qualitative study. *PLoS One* 2013;8:e67352.
- 20 Roper L, Sherratt F, Young B, *et al.* Children and young people’s views on research without prior consent in life threatening situations: a qualitative study. *Arch Dis Child* 2017;102:A108.
- 21 NICE. *Sepsis: recognition, diagnosis and early management*. London: National Institute for Health and Clinical Excellence, 2016.
- 22 Brierley J, Carcillo JA, Choong K, *et al.* Clinical practice parameters for hemodynamic support of pediatric and neonatal septic shock: 2007 update from the American College of critical Care Medicine. *Crit Care Med* 2009;37:666–88.
- 23 Inwald DP, Tasker RC, Peters MJ, *et al.* Emergency management of children with severe sepsis in the United Kingdom: the results of the Paediatric Intensive Care Society sepsis audit. *Arch Dis Child* 2009;94:348–53.
- 24 Vyse A, Anonychuk A, Jäkel A, *et al.* The burden and impact of severe and long-term sequelae of meningococcal disease. *Expert Rev Anti Infect Ther* 2013;11:597–604.
- 25 Maitland K, Kiguli S, Opoka RO, *et al.* Mortality after fluid bolus in African children with severe infection. *N Engl J Med* 2011;364:2483–95.
- 26 Knapp P, Raynor DK, Silcock J, *et al.* Can user testing of a clinical trial patient information sheet make it fit-for-purpose?—a randomized controlled trial. *BMC Med* 2011;9:89.
- 27 Mays N, Pope C. Assessing quality in qualitative research. *BMJ* 2000;320:50–2.
- 28 Baker SE, Edwards R. *How many qualitative interviews is enough?* National Centre for Research Methods (NCRM); University of Southampton, 2012.
- 29 Guest G, Bunce A, Johnson L. How many interviews are enough? an experiment with data saturation and variability. *Field Methods* 2006;18:59–82.
- 30 Braun V, Clarke V. What can ‘thematic analysis’ offer health and wellbeing researchers? *Int J Qual Stud Health Well-being* 2014;9:26152.
- 31 Braun V, Clarke V. Using thematic analysis in psychology. *Qual Res Psychol* 2006;3:77–101.
- 32 Glaser BG. The constant comparative method of qualitative analysis. *Soc Probl* 1965;12:436–45.
- 33 Strauss A, Corbin J. *Basics of qualitative research: techniques and procedures for developing grounded theory*. 2nd edn. CA: Thousand Oaks, Sage, 1998.
- 34 Stiles WB. Evaluating qualitative research. *Evid Based Ment Health* 1999;2:99–101.
- 35 Tong A, Sainsbury P, Craig J. Consolidated criteria for reporting qualitative research (COREQ): a 32-item checklist for interviews and focus groups. *Int J Qual Health Care* 2007;19:349–57.
- 36 Woolfall K, Frith L, Dawson A, *et al.* Fifteen-minute consultation: an evidence-based approach to research without prior consent (deferred consent) in neonatal and paediatric critical care trials. *Arch Dis Child Educ Pract Ed* 2016;101:49–53.
- 37 Young B, Gamble C, Frith L, *et al.* *Research without prior consent (deferred consent) in trials investigating the emergency treatment of critically ill children: connect study guidance*. University of Liverpool, 2015.
- 38 Morris MC, Nadkarni VM, Ward FR, *et al.* Exception from informed consent for pediatric resuscitation research: community consultation for a trial of brain cooling after in-hospital cardiac arrest. *Pediatrics* 2004;114:776–81.
- 39 Jansen TC, Kompanje EJ, Bakker J. Deferred proxy consent in emergency critical care research: ethically valid and practically feasible. *Crit Care Med* 2009;37:S65–8.
- 40 Maitland K, Molyneux S, Boga M, *et al.* Use of deferred consent for severely ill children in a multi-centre phase III trial. *Trials* 2011;12:90.
- 41 Reinert C, Kremmler L, Burock S, *et al.* Quantitative and qualitative analysis of study-related patient information sheets in randomised neuro-oncology phase III-trials. *Eur J Cancer* 2014;50:150–8.
- 42 Gillies K, Entwistle VA. Supporting positive experiences and sustained participation in clinical trials: looking beyond information provision. *J Med Ethics* 2012;38:751–6.
- 43 Woolfall K, Frith L, Gamble C, *et al.* How experience makes a difference: practitioners’ views on the use of deferred consent in paediatric and neonatal emergency care trials. *BMC Med Ethics* 2013;14:45.
- 44 Menon K, Ward R. Canadian Critical Care Trials Group. A study of consent for participation in a non-therapeutic study in the pediatric intensive care population. *J Med Ethics* 2014;40:123–6.
- 45 Jansen TC, Kompanje EJ, Druml C, *et al.* Deferred consent in emergency intensive care research: what if the patient dies early? use the data or not? *Intensive Care Med* 2007;33:894–900.
- 46 PICANet. Paediatric Intensive Care Audit Network (PICANet) Annual Report. UK Universities of Leeds and Leicester, 2013.
- 47 Donovan J, Mills N, Smith M, *et al.* Quality improvement report: Improving design and conduct of randomised trials by embedding them in qualitative research: ProtecT (prostate testing for cancer and treatment) study. Commentary: presenting unbiased information to patients can be difficult. *BMJ* 2002;325:766–70.
- 48 Shilling V, Williamson PR, Hickey H, *et al.* Processes in recruitment to randomised controlled trials of medicines for children (RECRUIT): a qualitative study. *Health Technol Assess* 2011;15:1–116.



A qualitative feasibility study to inform a randomised controlled trial of fluid bolus therapy in septic shock

Caitlin B O'Hara, Ruth R Canter, Paul R Mouncey, Anjali Carter, Nicola Jones, Simon Nadel, Mark J Peters, Mark D Lyttle, David A Harrison, Kathryn M Rowan, David Inwald and Kerry Woolfall

Arch Dis Child 2018 103: 28-32 originally published online August 28, 2017

doi: 10.1136/archdischild-2016-312515

Updated information and services can be found at:

<http://adc.bmj.com/content/103/1/28>

These include:

References

This article cites 40 articles, 13 of which you can access for free at:

<http://adc.bmj.com/content/103/1/28#ref-list-1>

Open Access

This is an Open Access article distributed in accordance with the terms of the Creative Commons Attribution (CC BY 4.0) license, which permits others to distribute, remix, adapt and build upon this work, for commercial use, provided the original work is properly cited. See:

<http://creativecommons.org/licenses/by/4.0/>

Email alerting service

Receive free email alerts when new articles cite this article. Sign up in the box at the top right corner of the online article.

Topic Collections

Articles on similar topics can be found in the following collections

[Open access](#) (228)

Notes

To request permissions go to:

<http://group.bmj.com/group/rights-licensing/permissions>

To order reprints go to:

<http://journals.bmj.com/cgi/reprintform>

To subscribe to BMJ go to:

<http://group.bmj.com/subscribe/>